

高壓花的手轉螺絲 · DIN 464

EH 24790.



產品描述

Knurled thumb screws are very versatile. Three material versions for the different requirements

- steel, blackened
- steel, zinc-plated by galvanization
- stainless steel

are available.

Knurled thumb screws can be easily tightened and released by hand. The ribbed outer surface of the nut prevents slipping when tightening / releasing with the fingers.

伍全滾花螺絲是一件式製造的。與標準板材相反，它們通常在製造時帶有直至頭部的螺紋，並且在螺紋末端具有沒有底切的跳動。因此螺絲不能擰入到軸環處。

材質

- 鋼、染黑、品質 5.8
- 鋼，鍍鋅，強度5.8
- 不銹鋼 1.4305，鈍化噴砂

更多資訊

注意事項

根據 DIN 規範，壓花的間距和深度也不同。


更多產品

- 平壓花拇指螺帽, DIN 653

圖面



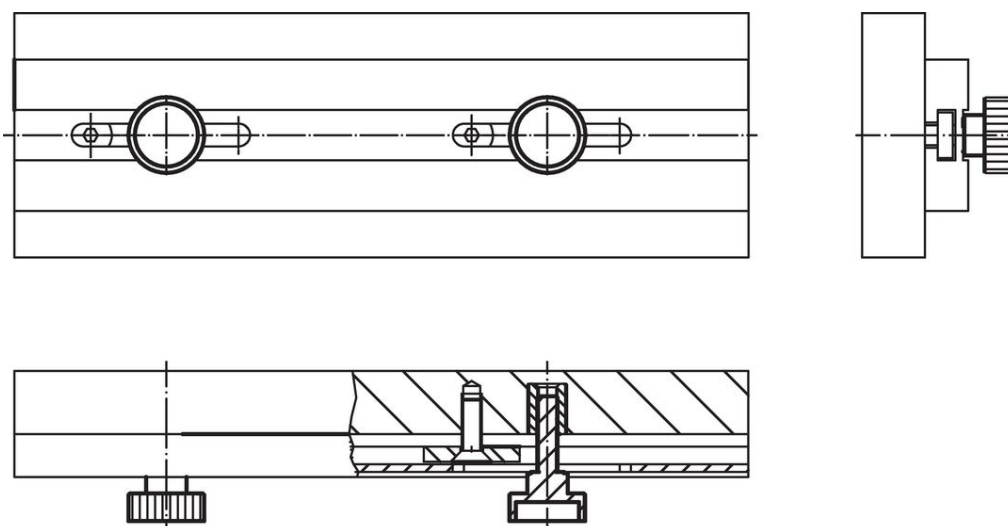
訂單資訊

d ₁	l	d ₂	尺寸 d ₃ [mm]	h	k	 [g]	品號
鋼、染黑、品質 5.8							
M 3	6	12	6	7,5	2,5	3,7	24790.0074
M 3	10	12	6	7,5	2,5	3,8	24790.0076
M 3	12	12	6	7,5	2,5	4,0	24790.0077
M 3	16	12	6	7,5	2,5	4,0	24790.0079
M 3	20	12	6	7,5	2,5	4,5	24790.0081
M 4	5	16	8	9,5	3,5	7,7	24790.0092
M 4	8	16	8	9,5	3,5	8,0	24790.0094
M 4	10	16	8	9,5	3,5	8,1	24790.0095
M 4	12	16	8	9,5	3,5	8,6	24790.0096
M 4	16	16	8	9,5	3,5	8,4	24790.0098
M 4	20	16	8	9,5	3,5	9,1	24790.0100
M 4	25	16	8	9,5	3,5	9,0	24790.0102
M 5	6	20	10	11,5	4,0	14,0	24790.0112
M 5	8	20	10	11,5	4,0	15,0	24790.0113
M 5	10	20	10	11,5	4,0	15,0	24790.0114
M 5	12	20	10	11,5	4,0	15,0	24790.0115
M 5	16	20	10	11,5	4,0	16,0	24790.0117
M 5	20	20	10	11,5	4,0	16,0	24790.0119

d ₁	l	d ₂	尺寸			[g]	品號
			d ₃ [mm]	h	k		
M 5	25	20	10	11,5	4,0	17,0	24790.0121
M 5	30	20	10	11,5	4,0	17,0	24790.0123
M 6	8	24	12	15,0	5,0	28,0	24790.0132
M 6	10	24	12	15,0	5,0	27,0	24790.0133
M 6	12	24	12	15,0	5,0	28,0	24790.0134
M 6	16	24	12	15,0	5,0	28,0	24790.0136
M 6	20	24	12	15,0	5,0	29,0	24790.0138
M 6	25	24	12	15,0	5,0	30,0	24790.0140
M 6	30	24	12	15,0	5,0	31,0	24790.0142
M 6	35	24	12	15,0	5,0	31,0	24790.0144
M 8	12	30	16	18,0	6,0	53,0	24790.0152
M 8	16	30	16	18,0	6,0	55,0	24790.0154
M 8	20	30	16	18,0	6,0	56,0	24790.0156
M 8	25	30	16	18,0	6,0	58,0	24790.0158
M 8	30	30	16	18,0	6,0	60,0	24790.0160
M 8	35	30	16	18,0	6,0	62,0	24790.0162
M 8	40	30	16	18,0	6,0	61,0	24790.0164
M10	15	36	20	23,0	8,0	104,0	24790.0171
M10	20	36	20	23,0	8,0	106,0	24790.0173
M10	25	36	20	23,0	8,0	109,0	24790.0175
M10	30	36	20	23,0	8,0	112,0	24790.0177
M10	35	36	20	23,0	8,0	116,0	24790.0179
M10	40	36	20	23,0	8,0	116,0	24790.0181
鋼, 鍍鋅							
M 3	6	12	6	7,5	2,5	4,0	24790.0474
M 3	8	12	6	7,5	2,5	4,0	24790.0475
M 3	10	12	6	7,5	2,5	4,0	24790.0476
M 3	12	12	6	7,5	2,5	4,0	24790.0477
M 3	16	12	6	7,5	2,5	5,0	24790.0479
M 3	20	12	6	7,5	2,5	5,0	24790.0481
M 4	5	16	8	9,5	3,5	9,0	24790.0492
M 4	8	16	8	9,5	3,5	8,0	24790.0494
M 4	10	16	8	9,5	3,5	8,0	24790.0495
M 4	12	16	8	9,5	3,5	8,0	24790.0496
M 4	16	16	8	9,5	3,5	8,0	24790.0498
M 4	20	16	8	9,5	3,5	9,0	24790.0500
M 4	25	16	8	9,5	3,5	9,0	24790.0502
M 5	6	20	10	11,5	4,0	15,0	24790.0512
M 5	8	20	10	11,5	4,0	15,0	24790.0513
M 5	10	20	10	11,5	4,0	15,0	24790.0514
M 5	12	20	10	11,5	4,0	14,0	24790.0515
M 5	16	20	10	11,5	4,0	15,0	24790.0517
M 5	20	20	10	11,5	4,0	16,0	24790.0519
M 5	25	20	10	11,5	4,0	16,0	24790.0521
M 5	30	20	10	11,5	4,0	17,0	24790.0523
M 6	8	24	12	15,0	5,0	27,0	24790.0532
M 6	10	24	12	15,0	5,0	27,0	24790.0533
M 6	12	24	12	15,0	5,0	27,0	24790.0534
M 6	16	24	12	15,0	5,0	28,0	24790.0536
M 6	20	24	12	15,0	5,0	29,0	24790.0538
M 6	25	24	12	15,0	5,0	28,0	24790.0540
M 6	30	24	12	15,0	5,0	30,0	24790.0542
M 6	35	24	12	15,0	5,0	31,0	24790.0544
M 8	12	30	16	18,0	6,0	55,0	24790.0552
M 8	16	30	16	18,0	6,0	55,0	24790.0554
M 8	20	30	16	18,0	6,0	56,0	24790.0556
M 8	25	30	16	18,0	6,0	58,0	24790.0558
M 8	30	30	16	18,0	6,0	50,0	24790.0560
M 8	35	30	16	18,0	6,0	63,0	24790.0562
M 8	40	30	16	18,0	6,0	62,0	24790.0564
M10	12	36	20	23,0	8,0	105,0	24790.0570
M10	15	36	20	23,0	8,0	106,0	24790.0571

d ₁	l	d ₂	尺寸			k	[g]	品號
			d ₃	h	[mm]			
M10	20	36	20	23,0	8,0	107,0	24790.0573	
M10	25	36	20	23,0	8,0	110,0	24790.0575	
M10	30	36	20	23,0	8,0	112,0	24790.0577	
M10	35	36	20	23,0	8,0	115,0	24790.0579	
M10	40	36	20	23,0	8,0	116,0	24790.0581	
不鏽鋼 1.4305								
M 3	6	12	6	7,5	2,5	3,7	24790.0274	
M 3	10	12	6	7,5	2,5	3,8	24790.0276	
M 3	12	12	6	7,5	2,5	4,0	24790.0277	
M 3	16	12	6	7,5	2,5	4,0	24790.0279	
M 4	8	16	8	9,5	3,5	8,0	24790.0294	
M 4	10	16	8	9,5	3,5	8,1	24790.0295	
M 4	12	16	8	9,5	3,5	8,6	24790.0296	
M 4	16	16	8	9,5	3,5	8,4	24790.0298	
M 4	20	16	8	9,5	3,5	9,1	24790.0300	
M 4	25	16	8	9,5	3,5	9,0	24790.0302	
M 5	10	20	10	11,5	4,0	15,0	24790.0314	
M 5	12	20	10	11,5	4,0	15,0	24790.0315	
M 5	16	20	10	11,5	4,0	16,0	24790.0317	
M 5	20	20	10	11,5	4,0	16,0	24790.0319	
M 5	25	20	10	11,5	4,0	17,0	24790.0321	
M 5	30	20	10	11,5	4,0	17,0	24790.0323	
M 6	12	24	12	15,0	5,0	28,0	24790.0334	
M 6	16	24	12	15,0	5,0	28,0	24790.0336	
M 6	20	24	12	15,0	5,0	29,0	24790.0338	
M 6	25	24	12	15,0	5,0	30,0	24790.0340	
M 6	30	24	12	15,0	5,0	31,0	24790.0342	
M 6	35	24	12	15,0	5,0	31,0	24790.0344	
M 8	16	30	16	18,0	6,0	55,0	24790.0354	
M 8	20	30	16	18,0	6,0	56,0	24790.0356	
M 8	25	30	16	18,0	6,0	58,0	24790.0358	
M 8	30	30	16	18,0	6,0	60,0	24790.0360	
M 8	35	30	16	18,0	6,0	62,0	24790.0362	

應用範例



遵守

有關詳細的合規信息，請選擇所需的貨號。