

高壓花的螺母 (有軸環) · DIN 466

EH 24780.



產品描述

材質

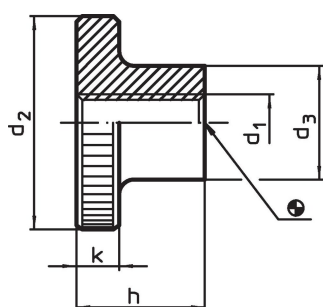
- 鋼，塗黑，質量 5
- Steel, zinc-plated by galvanization, quality 5
- 不銹鋼 1.4301，噴砂處理

更多資訊


注意事項

根據 DIN 規範，壓花的間距和深度也不同。

圖面

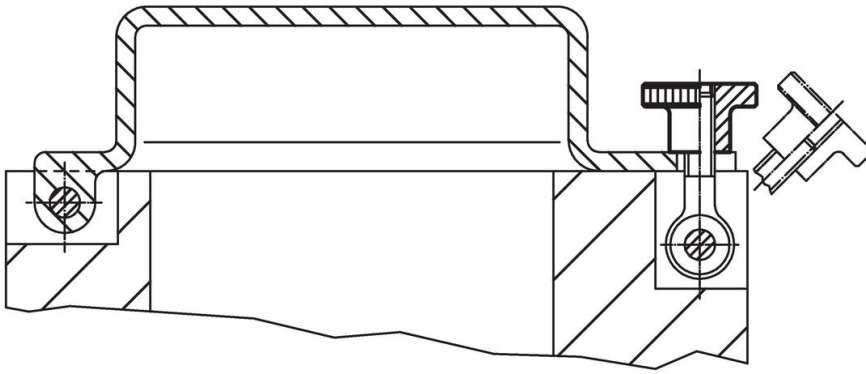


訂單資訊

d ₁	d ₂	d ₃	尺寸 [mm]	h	k	 [g]	品號
鋼，染黑							
M 3	12	6	7,5	2,5	2,9	24780.0030	
M 4	16	8	9,5	3,5	6,7	24780.0040	
M 5	20	10	11,5	4,0	12,0	24780.0050	
M 6	24	12	15,0	5,0	23,0	24780.0060	
M 8	30	16	18,0	6,0	44,0	24780.0080	
M10	36	20	23,0	8,0	85,0	24780.0100	
M12	40	22	25,0	10,0	119,0	24780.0120 ¹⁾	
鋼，鍍鋅							
M 3	12	6	7,5	2,5	3,0	24780.0330	
M 4	16	8	9,5	3,5	7,0	24780.0340	
M 5	20	10	11,5	4,0	12,0	24780.0350	
M 6	24	12	15,0	5,0	22,0	24780.0360	
M 8	30	16	18,0	6,0	42,0	24780.0380	
M10	36	20	23,0	8,0	84,0	24780.0400	
M12	40	22	25,0	10,0	119,0	24780.0412 ¹⁾	
不銹鋼 1.4301							
M 4	16	8	9,5	3,5	6,7	24780.0240	
M 5	20	10	11,5	4,0	12,0	24780.0250	
M 6	24	12	15,0	5,0	23,0	24780.0260	
M 8	30	16	18,0	6,0	44,0	24780.0280	
M10	36	20	23,0	8,0	85,0	24780.0300	

¹⁾ DIN 標準不包含這些尺寸。

應用範例



遵守

有關詳細的合規信息，請選擇所需的貨號。