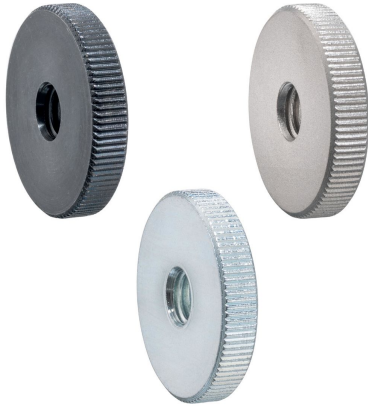


平壓花螺帽 · DIN 467 EH 24760.



產品描述

Knurled nuts are very versatile. Three material versions for the different requirements

- Steel, blackened
- Steel, zinc-plated by galvanization
- Stainless steel

are available. Knurled nuts can be easily tightened and released by hand. The ribbed outer surface of the nut prevents slipping when tightening / releasing with the fingers. The flat knurled nuts are manufactured according to DIN 467.

材質

- 鋼，塗黑，質量 5
- 鋼，鍍鋅，強度 5
- 不銹鋼 1.4305，鈍化噴砂

更多資訊

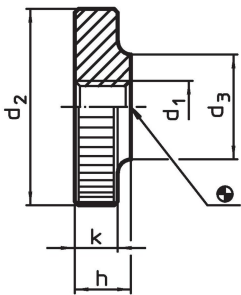
注意事項

根據 DIN 規範，壓花的間距和深度也不同。


更多產品

- 高滾花螺母, DIN 466

圖面



訂單資訊

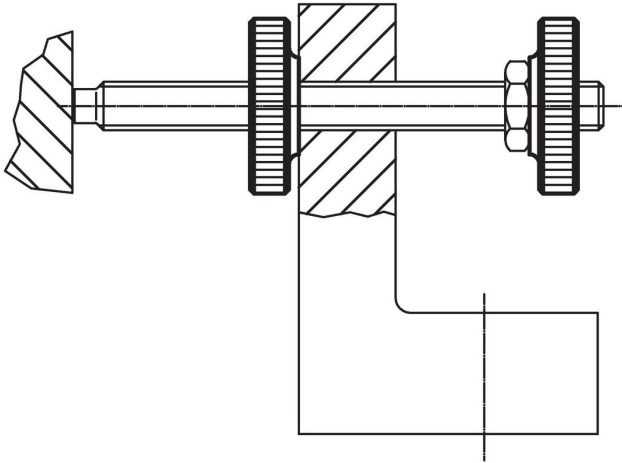
d ₁	d ₂	尺寸 d ₃ [mm]	h	k	 [g]	品號
鋼，染黑						
M 3	12	6	3	2,5	2,1	24760.0030
M 4	16	8	4	3,5	5,1	24760.0040
M 5	20	10	5	4,0	9,4	24760.0050
M 6	24	12	6	5,0	17,0	24760.0060
M 8	30	16	8	6,0	32,0	24760.0080
M10	36	20	10	8,0	61,0	24760.0100
M12	40	22	12	10,0	92,0	24760.0120 ¹⁾
鋼，鍍鋅						
M 3	12	6	3	2,5	2,0	24760.0430
M 4	16	8	4	3,5	5,0	24760.0440
M 5	20	10	5	4,0	9,0	24760.0450
M 6	24	12	6	5,0	17,0	24760.0460
M 8	30	16	8	6,0	32,0	24760.0480
M10	36	20	10	8,0	62,0	24760.0500
M12	40	22	12	10,0	92,0	24760.0512 ¹⁾

¹⁾ DIN 標準不包含這些尺寸。

d ₁	d ₂	尺寸			k	[g]	品號
		d ₃ [mm]	h				
不鏽鋼 1.4305							
M 3	12	6	3	2,5	2,1	24760.0230	
M 4	16	8	4	3,5	5,1	24760.0240	
M 5	20	10	5	4,0	9,4	24760.0250	
M 6	24	12	6	5,0	17,0	24760.0260	
M 8	30	16	8	6,0	32,0	24760.0280	
M10	36	20	10	8,0	61,0	24760.0300	

¹⁾ DIN 標準不包含這些尺寸。

應用範例



遵守

有關詳細的合規信息，請選擇所需的貨號。