

扭矩手柄 EH 24710.



產品描述

扭矩手柄用於需要限制施加的手力的地方。手柄類似於滾花螺母/滾花翼形螺釘，帶有集成扭矩機構，可在擰緊過程中定義扭矩限制。達到扭矩會導致“過度鎖定”。為釋放扭矩無限期地傳遞。這些手柄將棘輪扳手的功能與現代和符合人體工程學的滾花螺母/滾花指旋螺釘設計相結合。

材質

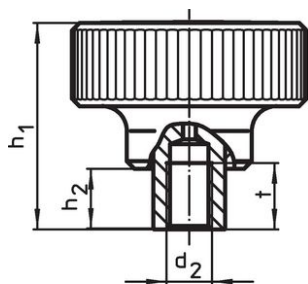
- 蓋子
 - 熱塑性PA 6，淺灰色，類似於RAL 7035
- 扭力機構
 - 鋼，硬化
- 把手
 - 鋁，黑色陽極
- 內部零件
 - 鋼，染黑
- 螺絲
 - 鋼，染黑

更多資訊

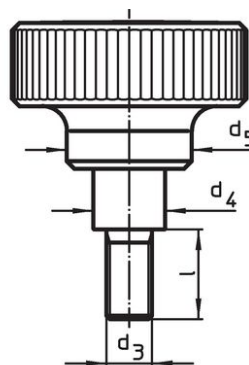
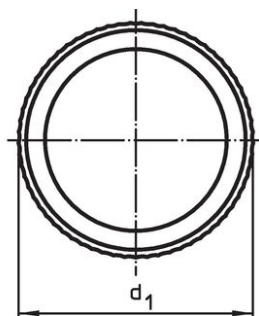
更多產品

- 三瓣扭矩手柄

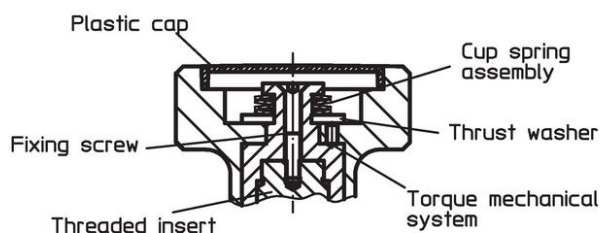
圖面



picture 1




picture 2



訂單資訊

尺寸									max. [°C]	起動 扭力 +/- 10% max. [Nm]	[g]	品號
d ₁	d ₂	d ₃	l	d ₄	d ₅	h ₁	h ₂	t				
有母牙 – 相片 1												
34	M 3	–	–	10,0	21	37,5	9,5	7	100	1,0	48	24710.0020
34	M 4	–	–	10,0	21	37,5	9,5	9	100	1,0	60	24710.0022
34	M 5	–	–	10,0	21	37,5	9,5	9	100	1,0	62	24710.0024
34	M 6	–	–	10,0	21	37,5	9,5	9	100	1,0	60	24710.0026
42	M 6	–	–	13,5	27	43,5	11,5	11	100	2,0	111	24710.0030
42	M 8	–	–	13,5	27	43,5	11,5	11	100	2,0	112	24710.0032
52	M10	–	–	19,0	32	54,0	15,5	17	100	3,0	221	24710.0040
52	M12	–	–	19,0	32	54,0	15,5	17	100	3,0	208	24710.0042

尺寸									max. [°C]	起動 扭力 +/- 10% max. [Nm]	 [g]	品號
d ₁	d ₂	d ₃	l	d ₄	d ₅	h ₁	h ₂	t				
[mm]												
62	M10	-	-	19,0	33	54,0	15,5	17	100	4,0	244	24710.0050
62	M12	-	-	19,0	33	54,0	15,5	17	100	4,0	285	24710.0052
62	M10	-	-	19,0	33	54,0	15,5	17	100	5,5	245	24710.0060
62	M12	-	-	19,0	33	54,0	15,5	17	100	5,5	285	24710.0062
有螺絲 - 相片 2												
34	-	M 5	12	10,0	21	37,5	9,5	-	100	1,0	62	24710.0300
34	-	M 5	16	10,0	21	37,5	9,5	-	100	1,0	63	24710.0301
34	-	M 5	20	10,0	21	37,5	9,5	-	100	1,0	60	24710.0302
34	-	M 5	25	10,0	21	37,5	9,5	-	100	1,0	64	24710.0303
34	-	M 5	32	10,0	21	37,5	9,5	-	100	1,0	65	24710.0304
34	-	M 6	12	10,0	21	37,5	9,5	-	100	1,0	60	24710.0305
34	-	M 6	16	10,0	21	37,5	9,5	-	100	1,0	65	24710.0306
34	-	M 6	20	10,0	21	37,5	9,5	-	100	1,0	65	24710.0307
34	-	M 6	25	10,0	21	37,5	9,5	-	100	1,0	67	24710.0308
34	-	M 6	32	10,0	21	37,5	9,5	-	100	1,0	70	24710.0309
42	-	M 8	16	13,5	27	43,5	11,5	-	100	2,0	152	24710.0400
42	-	M 8	20	13,5	27	43,5	11,5	-	100	2,0	153	24710.0401
42	-	M 8	25	13,5	27	43,5	11,5	-	100	2,0	123	24710.0402
42	-	M 8	32	13,5	27	43,5	11,5	-	100	2,0	158	24710.0403
42	-	M 8	40	13,5	27	43,5	11,5	-	100	2,0	128	24710.0404
42	-	M10	20	13,5	27	43,5	11,5	-	100	2,0	120	24710.0405
42	-	M10	25	13,5	27	43,5	11,5	-	100	2,0	120	24710.0406
42	-	M10	32	13,5	27	43,5	11,5	-	100	2,0	131	24710.0407
42	-	M10	40	13,5	27	43,5	11,5	-	100	2,0	179	24710.0408
42	-	M10	50	13,5	27	43,5	11,5	-	100	2,0	187	24710.0409
52	-	M10	25	19,0	32	54,0	15,5	-	100	3,0	241	24710.0500
52	-	M10	32	19,0	32	54,0	15,5	-	100	3,0	246	24710.0501
52	-	M10	40	19,0	32	54,0	15,5	-	100	3,0	248	24710.0502
52	-	M10	50	19,0	32	54,0	15,5	-	100	3,0	254	24710.0503
52	-	M10	63	19,0	32	54,0	15,5	-	100	3,0	254	24710.0504
52	-	M12	25	19,0	32	54,0	15,5	-	100	3,0	251	24710.0505
52	-	M12	32	19,0	32	54,0	15,5	-	100	3,0	254	24710.0506
52	-	M12	40	19,0	32	54,0	15,5	-	100	3,0	262	24710.0507
52	-	M12	50	19,0	32	54,0	15,5	-	100	3,0	270	24710.0508
52	-	M12	63	19,0	32	54,0	15,5	-	100	3,0	274	24710.0509
62	-	M10	25	19,0	33	54,0	15,5	-	100	4,0	334	24710.0600
62	-	M10	32	19,0	33	54,0	15,5	-	100	4,0	339	24710.0601
62	-	M10	40	19,0	33	54,0	15,5	-	100	4,0	341	24710.0602
62	-	M10	50	19,0	33	54,0	15,5	-	100	4,0	347	24710.0603
62	-	M10	63	19,0	33	54,0	15,5	-	100	4,0	355	24710.0604
62	-	M12	25	19,0	33	54,0	15,5	-	100	4,0	344	24710.0605
62	-	M12	32	19,0	33	54,0	15,5	-	100	4,0	347	24710.0606
62	-	M12	40	19,0	33	54,0	15,5	-	100	4,0	355	24710.0607
62	-	M12	50	19,0	33	54,0	15,5	-	100	4,0	363	24710.0608
62	-	M12	63	19,0	33	54,0	15,5	-	100	4,0	367	24710.0609
62	-	M10	25	19,0	33	54,0	15,5	-	100	5,5	266	24710.0700
62	-	M10	32	19,0	33	54,0	15,5	-	100	5,5	339	24710.0701
62	-	M10	40	19,0	33	54,0	15,5	-	100	5,5	277	24710.0702
62	-	M10	50	19,0	33	54,0	15,5	-	100	5,5	280	24710.0703
62	-	M10	63	19,0	33	54,0	15,5	-	100	5,5	355	24710.0704
62	-	M12	25	19,0	33	54,0	15,5	-	100	5,5	344	24710.0705
62	-	M12	32	19,0	33	54,0	15,5	-	100	5,5	347	24710.0706
62	-	M12	40	19,0	33	54,0	15,5	-	100	5,5	355	24710.0707
62	-	M12	50	19,0	33	54,0	15,5	-	100	5,5	363	24710.0708
62	-	M12	63	19,0	33	54,0	15,5	-	100	5,5	367	24710.0709

遵守

符合 RoHS

含鉛 - 相容除了例外 6a / 6b / 6c.

含有 >0.1% w/w 的 SVHC 物質

含鉛 - SVHC [REACH] 清單截至 2024 年 6 月 27 日

包含 65 號提案的物質



接觸鉛會導致癌症和生殖危害。接觸鎳會導致癌症。

<https://www.P65Warnings.ca.gov/>

不含衝突礦物

本產品不含來自剛果民主共和國或鄰近國家的任何被指定為“衝突礦物”的物質，例如鈿、錫、金或鎢。