

球形旋鈕 · 金屬類型，接近於 DIN 319

EH 24561.



產品描述

材質

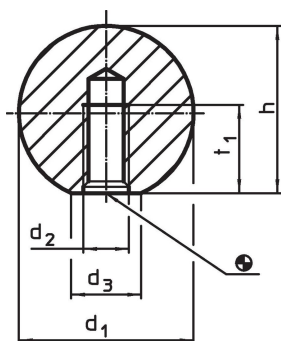
- 鋼、打磨、光亮
- 不銹鋼 1.4305，鈍化噴砂
- 鋁、磨光的

更多資訊


注意事項

供應 DIN 319 Form C 金屬型式。

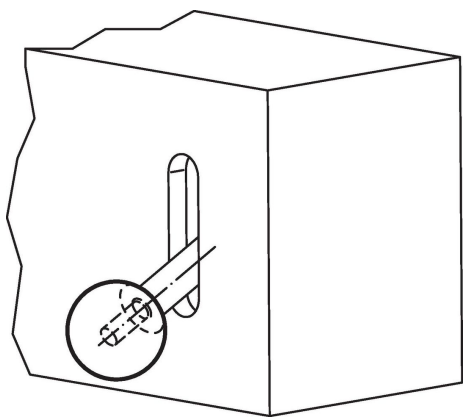
圖面



訂單資訊

d ₁	d ₂	d ₃ ~ [mm]	尺寸 h ~	t ₁ min	 [g]	品號
鋼						
16	M 4	8	15,0	7,0	16	24561.0016
20	M 5	12	18,0	9,0	26	24561.0020
25	M 6	15	22,5	11,0	58	24561.0025
32	M 8	18	29,0	14,5	116	24561.0032
40	M10	22	37,0	18,0	241	24561.0040
50	M12	27	46,0	21,0	475	24561.0050
不銹鋼						
16	M 4	8	15,0	7,0	16	24561.0216
20	M 5	12	18,0	9,0	26	24561.0220
25	M 6	15	22,5	11,0	58	24561.0225
32	M 8	18	29,0	14,5	116	24561.0232
40	M10	22	37,0	18,0	241	24561.0240
鋁						
16	M 4	8	15,0	7,0	16	24561.0116
20	M 5	12	18,0	9,0	26	24561.0120
25	M 6	15	22,5	11,0	58	24561.0125
32	M 8	18	29,0	14,5	116	24561.0132
40	M10	22	37,0	18,0	241	24561.0140
50	M12	27	46,0	21,0	475	24561.0150

應用範例



遵守

有關詳細的合規信息，請選擇所需的貨號。