

用於 T 型槽的螺帽 · DIN 508 EH 23010.



產品描述

這些用於 T 型槽的螺母 (槽螺母) 是根據 DIN 508 製造的。該範圍擴展了 DIN 中未包含的其他尺寸。

材質

- 鋼, 車修, 鍍鋅, 鈍化
- 熱處理鋼、鍛鍊的、品質10、染黑
- 不銹鋼 1.4301

組裝

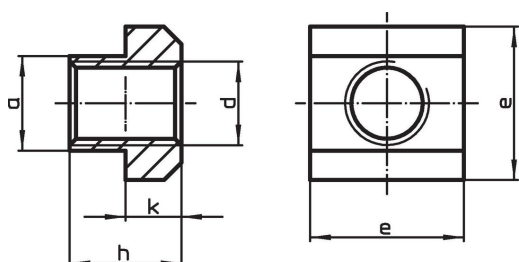
T 螺帽的全部負載容量只能被應用在保證螺絲旋入超過 T 螺帽的螺紋全長。

更多資訊

注意事項

特殊的樣式歡迎洽詢。


圖面



訂單資訊

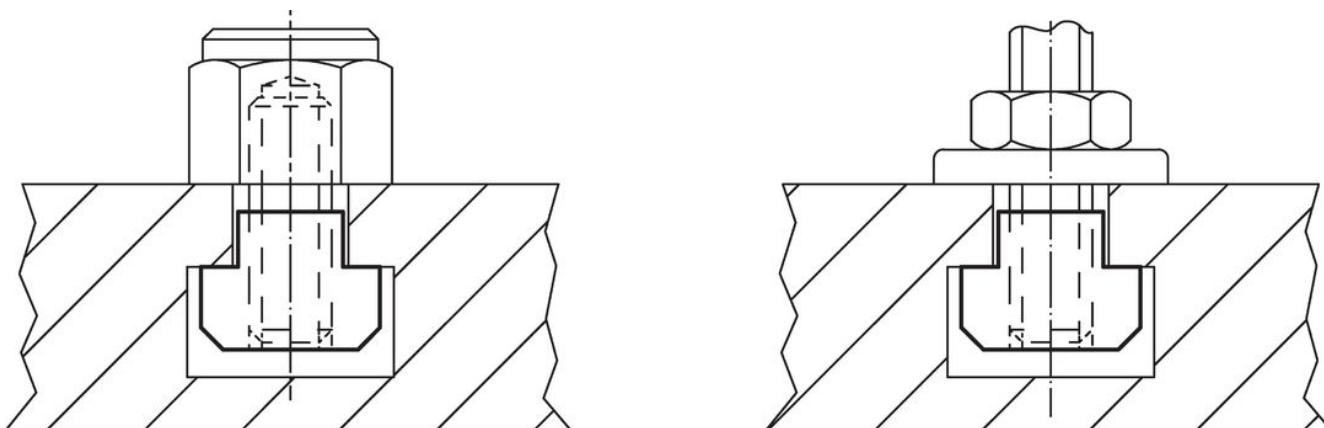
T槽尺寸 [mm]	d	a	尺寸 e [mm]	h	k	用於T型槽 DIN 650 [mm]	測試力量DIN 508 F min [kN]	 [g]	品號
鋼, 車修, 鍍鋅, 鈍化									
5	M 4	4,6	9	6,5	3	5	7,0	2,4	23010.0051
6	M 5	5,6	10	8,0	4	6	11,4	3,4	23010.0061
8	M 6	7,6	13	10,0	6	8	16,0	8,3	23010.0081
10	M 6	9,6	15	12,0	6	10	16,0	14,0	23010.0103 ¹⁾
10	M 8	9,6	15	12,0	6	10	29,0	12,0	23010.0101
12	M 8	11,6	18	14,0	7	12	29,0	23,0	23010.0123 ¹⁾
12	M10	11,6	18	14,0	7	12	46,0	20,0	23010.0121
14	M10	13,6	22	16,0	8	14	46,0	38,0	23010.0143 ¹⁾
14	M12	13,6	22	16,0	8	14	67,0	34,0	23010.0141
16	M12	15,6	25	18,0	9	16	67,0	55,0	23010.0163 ¹⁾
16	M14	15,6	25	18,0	9	16	-	49,0	23010.0161 ¹⁾
18	M14	17,6	28	20,0	10	18	-	74,0	23010.0183 ¹⁾
18	M16	17,6	28	20,0	10	18	128,0	68,0	23010.0181
20	M16	19,6	32	24,0	12	20	128,0	116,0	23010.0203 ¹⁾
20	M18	19,6	32	24,0	12	20	-	107,0	23010.0201 ¹⁾
22	M18	21,6	35	28,0	14	22	-	162,0	23010.0223 ¹⁾
22	M20	21,6	35	28,0	14	22	196,0	149,0	23010.0221
24	M20	23,6	40	32,0	16	24	196,0	236,0	23010.0243 ¹⁾
24	M22	23,6	40	32,0	16	24	-	221,0	23010.0241 ¹⁾
28	M24	27,6	44	36,0	18	28	282,0	317,0	23010.0281
36	M30	35,5	54	44,0	22	36	448,0	585,0	23010.0361
42	M36	41,5	65	52,0	26	42	653,0	1000,0	23010.0421
48	M42	47,5	75	60,0	30	48	653,0	1500,0	23010.0481
54	M48	53,4	85	70,0	34	54	653,0	2264,0	23010.0541

¹⁾ DIN 標準不包含這些尺寸。

T槽尺寸 [mm]	d	a	尺寸 [mm]			用於T型槽 DIN 650 [mm]	測試力量DIN 508 F min [kN]	 [g]	品號
			e	h	k				
熱處理鋼、鍛鍊的、品質10、染黑									
5	M 4	4,6	9	6,5	3	5	7,0	2,4	23010.0052
6	M 5	5,6	10	8,0	4	6	11,4	3,4	23010.0062
8	M 6	7,6	13	10,0	6	8	16,0	8,3	23010.0082
10	M 6	9,6	15	12,0	6	10	16,0	14,0	23010.0104 ¹⁾
10	M 8	9,6	15	12,0	6	10	29,0	12,0	23010.0102
12	M 8	11,6	18	14,0	7	12	29,0	23,0	23010.0124 ¹⁾
12	M10	11,6	18	14,0	7	12	46,0	20,0	23010.0122
14	M 6	13,6	22	16,0	8	14	16,0	43,0	23010.0146 ¹⁾
14	M 8	13,6	22	16,0	8	14	29,0	41,0	23010.0145 ¹⁾
14	M10	13,6	22	16,0	8	14	46,0	38,0	23010.0144 ¹⁾
14	M12	13,6	22	16,0	8	14	67,0	34,0	23010.0142
16	M 8	15,6	25	18,0	9	16	29,0	62,0	23010.0166 ¹⁾
16	M10	15,6	25	18,0	9	16	46,0	58,0	23010.0165 ¹⁾
16	M12	15,6	25	18,0	9	16	67,0	55,0	23010.0164 ¹⁾
16	M14	15,6	25	18,0	9	16	-	49,0	23010.0162 ¹⁾
18	M 8	17,6	28	20,0	10	18	29,0	89,0	23010.0187 ¹⁾
18	M10	17,6	28	20,0	10	18	46,0	85,0	23010.0186 ¹⁾
18	M12	17,6	28	20,0	10	18	67,0	98,0	23010.0185 ¹⁾
18	M14	17,6	28	20,0	10	18	-	74,0	23010.0184 ¹⁾
18	M16	17,6	28	20,0	10	18	128,0	68,0	23010.0182
20	M12	19,6	32	24,0	12	20	67,0	131,0	23010.0205 ¹⁾
20	M16	19,6	32	24,0	12	20	128,0	116,0	23010.0204 ¹⁾
20	M18	19,6	32	24,0	12	20	-	107,0	23010.0202 ¹⁾
22	M12	21,6	35	28,0	14	22	67,0	189,0	23010.0225 ¹⁾
22	M16	21,6	35	28,0	14	22	128,0	172,0	23010.0226 ¹⁾
22	M18	21,6	35	28,0	14	22	-	162,0	23010.0224 ¹⁾
22	M20	21,6	35	28,0	14	22	196,0	149,0	23010.0222
24	M16	23,6	40	32,0	16	24	128,0	262,0	23010.0246 ¹⁾
24	M20	23,6	40	32,0	16	24	196,0	236,0	23010.0244 ¹⁾
24	M22	23,6	40	32,0	16	24	-	221,0	23010.0242 ¹⁾
28	M16	27,6	44	36,0	18	28	128,0	375,0	23010.0286 ¹⁾
28	M20	27,6	44	36,0	18	28	196,0	349,0	23010.0284 ¹⁾
28	M22	27,6	44	36,0	18	28	-	332,0	23010.0283 ¹⁾
28	M24	27,6	44	36,0	18	28	282,0	317,0	23010.0282
32	M27	31,5	50	40,0	20	32	-	460,0	23010.0322 ¹⁾
36	M24	35,5	54	44,0	22	36	282,0	663,0	23010.0364 ¹⁾
36	M30	35,5	54	44,0	22	36	448,0	585,0	23010.0362
42	M36	41,5	65	52,0	26	42	653,0	1000,0	23010.0422
48	M42	47,5	75	60,0	30	48	653,0	1500,0	23010.0482
54	M48	53,4	85	70,0	34	54	653,0	2264,0	23010.0542
不銹鋼 1.4301									
8	M 6	7,6	13	10,0	6	8	16,0	8,3	23010.0721
10	M 8	9,6	15	12,0	6	10	29,0	12,0	23010.0731
12	M10	11,6	18	14,0	7	12	46,0	20,0	23010.0741
14	M12	13,6	22	16,0	8	14	67,0	34,0	23010.0751
16	M14	15,6	25	18,0	9	16	-	49,0	23010.0761 ¹⁾
18	M16	17,6	28	20,0	10	18	128,0	68,0	23010.0781

¹⁾ DIN 標準不包含這些尺寸。

應用範例



遵守

符合 RoHS

符合指令 2011/65/EU 和指令 2015/863

不含 SVHC 物質

不含超過 0.1% w/w 的 SVHC 物質 - 截至 2024 年 6 月 27 日的 SVHC 清單。

不含 65 號提案物質

不包括 65 號提案物質

<https://www.P65Warnings.ca.gov/>

不含衝突礦物

本產品不含來自剛果民主共和國或鄰近國家的任何被指定為“衝突礦物”的物質，例如鉭、錫、金或鎳。