

承座銷 · 銷型

EH 22680.



產品描述

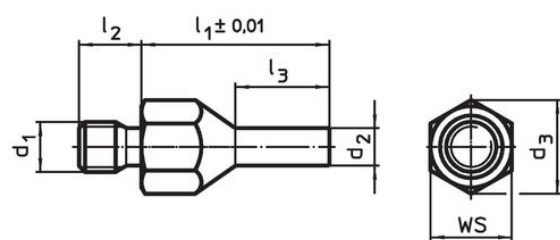
適合作為實心且精密的底座元件及止動元件，而梢狀型式的此種定位梢，可應用於定位點窄小的元件中。

表面感應硬化和地面

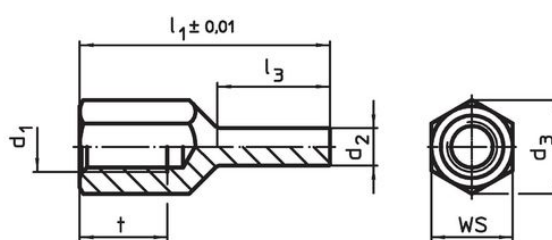
材質

- 鋼，熱處理，染黑

圖面




picture 1



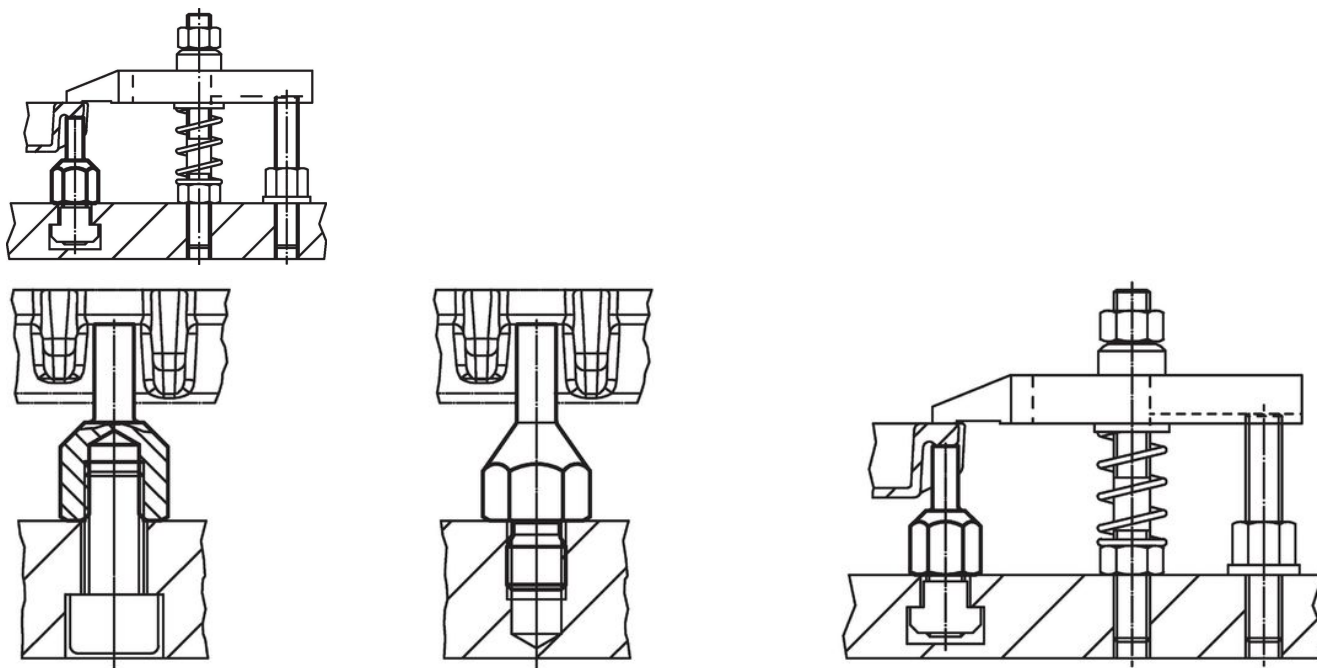
picture 2

訂單資訊

l ₁ ±0,01	d ₁	d ₂	尺寸					WS [mm]	起動 扭力 max. [Nm]	 [g]	品號
			l ₂	l ₃	t	d ₃	[mm]				
有公牙 - 相片 1											
20	M 6	4	8	10,0	-	11,0	10	7	7,7	22680.0402	
30	M 6	4	8	15,0	-	11,0	10	7	12,0	22680.0404	
30	M 8	4	10	15,0	-	14,4	13	18	17,0	22680.0412	
40	M 8	4	10	20,0	-	14,4	13	18	23,0	22680.0414	
30	M 8	6	10	15,0	-	14,4	13	18	20,0	22680.0416	
40	M 8	6	10	20,0	-	14,4	13	18	30,0	22680.0418	
30	M10	6	14	15,0	-	19,0	17	32	30,0	22680.0422	
50	M10	6	14	25,0	-	19,0	17	32	51,0	22680.0424	
30	M10	8	14	15,0	-	19,0	17	32	35,0	22680.0426	
50	M10	8	14	25,0	-	19,0	17	32	58,0	22680.0428	
40	M12	6	14	20,0	-	21,2	19	60	48,0	22680.0432	
60	M12	6	14	30,0	-	21,2	19	60	75,0	22680.0434	
40	M12	8	14	20,0	-	21,2	19	60	56,0	22680.0436	
60	M12	8	14	30,0	-	21,2	19	60	83,0	22680.0438	
有母牙 - 相片 2											
20	M 6	4	-	8,5	6	11,0	10	7	5,7	22680.0452	
30	M 6	4	-	13,5	9	11,0	10	7	8,9	22680.0454	
30	M 8	4	-	13,0	10	14,4	13	18	13,0	22680.0462	
40	M 8	4	-	18,0	14	14,4	13	18	18,0	22680.0464	
30	M 8	6	-	13,0	10	14,4	13	18	16,0	22680.0466	
40	M 8	6	-	18,0	14	14,4	13	18	21,0	22680.0468	
30	M10	6	-	12,0	10	19,0	17	32	24,0	22680.0472	
50	M10	6	-	25,0	15	19,0	17	32	38,0	22680.0474	
30	M10	8	-	12,0	10	19,0	17	32	28,0	22680.0476	
50	M10	8	-	25,0	15	19,0	17	32	44,0	22680.0478	

l ₁ ±0,01	d ₁	d ₂	尺寸				WS [mm]	起動 扭力 max. [Nm]	 [g]	品號
			l ₂	l ₃	t	d ₃				
40	M12	6	–	18,0	12	21,2	19	60	36,0	22680.0482
60	M12	6	–	28,0	18	21,2	19	60	56,0	22680.0484
40	M12	8	–	18,0	12	21,2	19	60	41,0	22680.0486
60	M12	8	–	28,0	18	21,2	19	60	63,0	22680.0488

應用範例



遵守

符合 RoHS

符合指令 2011/65/EU 和指令 2015/863

不含 SVHC 物質

不含超過 0.1% w/w 的 SVHC 物質 - 截至 2024 年 1 月 23 日的 SVHC 清單。

不含 65 號提案物質

不包括 65 號提案物質

<https://www.P65Warnings.ca.gov/>

不含衝突礦物

本產品不含來自剛果民主共和國或鄰近國家的任何被指定為“衝突礦物”的物質，例如鈿、錫、金或鎢。