

定位柱 · 有螺栓和內六角

EH 22030.



產品描述

適用於定位、供壓或頂舉。

材質

螺絲形支撐座
 • 切削鋼，硬化，染黑
 • 不鏽鋼 1.4305, 氮化

本體

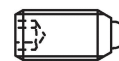
• 切削鋼，染黑
 • 不鏽鋼 1.4305

彈簧

• 不銹鋼

特性

標準彈簧荷重: 無標示
 強化彈簧荷重: 以兩條線標示



Standard spring load



Heavy spring load

更多資訊

注意事項

特殊的樣式歡迎洽詢。
 定位柱經過特別測試，以得知其彈簧的範圍和作用。

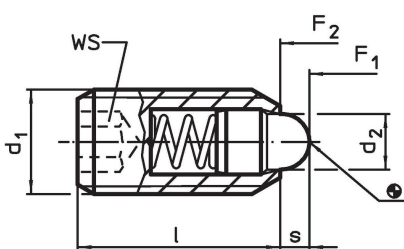
參考

螺紋鎖附依需求，請參閱附錄 - 技術數據 -

更多產品

- 托座，用於定位柱
- 定位柱，有螺栓和內六角- 英寸

圖面



訂單資訊

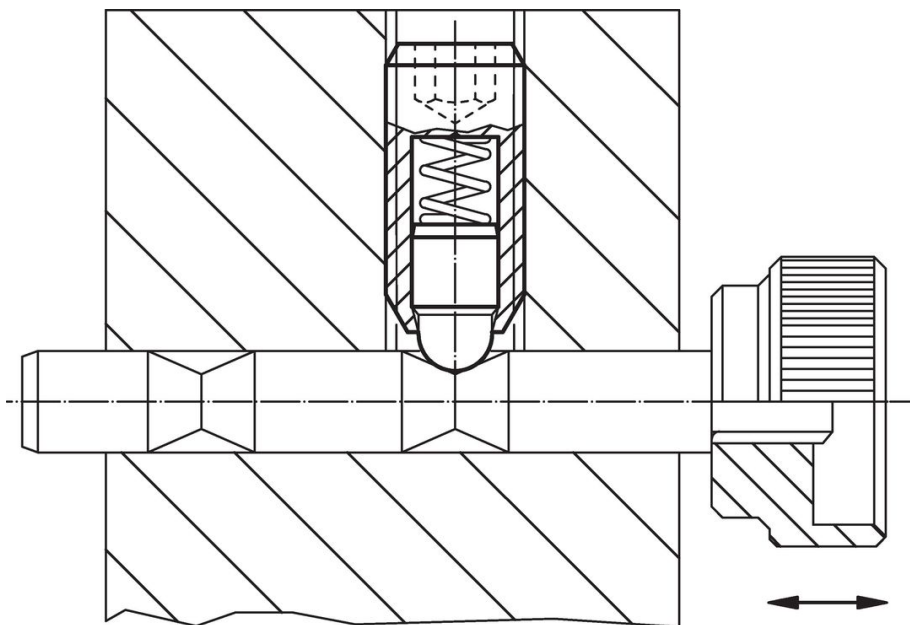
d ₁	尺寸		WS	行程 s	彈簧荷重 ¹⁾		max. [°C]	[g]	品號
	d ₂	l			F ₁ ~	F ₂ ~			
[mm]		[mm]	[mm]	[mm]	[N]				
切削鋼，標準彈簧荷重									
M 4	1,8	12	2,0	1,5	4,5	12,5	250	0,6	22030.0104
M 5	2,4	14	2,5	2,0	5,0	13,0	250	1,2	22030.0105
M 6	2,7	15	3,0	2,0	6,0	17,0	250	1,8	22030.0106
M 8	3,8	18	4,0	2,0	16,0	33,0	250	4,1	22030.0108
M10	4,5	23	5,0	2,5	19,0	42,0	250	8,4	22030.0110
M12	6,2	26	6,0	3,5	22,0	57,0	250	13,0	22030.0112
M16	8,5	33	8,0	4,5	38,0	78,0	250	32,0	22030.0116
M20	10,0	43	10,0	6,5	39,0	81,0	250	68,0	22030.0120
M24	13,0	48	12,0	8,0	72,0	155,0	250	106,0	22030.0124
切削鋼，增強彈簧荷重									
M 6	2,7	15	3,0	2,0	11,0	25,0	250	1,9	22030.0146
M 8	3,8	18	4,0	2,0	23,0	59,0	250	4,1	22030.0148
M10	4,5	23	5,0	2,5	20,0	54,0	250	8,4	22030.0150
M12	6,2	26	6,0	3,5	38,0	96,0	250	13,0	22030.0152
M16	8,5	33	8,0	4,5	50,0	100,0	250	32,0	22030.0156
M20	10,0	43	10,0	6,5	52,0	133,0	250	68,0	22030.0160
M24	13,0	48	12,0	8,0	91,0	223,0	250	106,0	22030.0164

¹⁾ 統計平均值

尺寸			WS [mm]	行程 s [mm]	彈簧荷重 ¹⁾		max. [°C]	[g]	品號
d ₁	d ₂	l			F ₁ ~ [N]	F ₂ ~ [N]			
不銹鋼，標準彈簧荷重									
M 4	1,8	12	2,0	1,5	4,5	12,5	250	0,6	22030.0304
M 5	2,4	14	2,5	2,0	5,0	13,0	250	1,2	22030.0305
M 6	2,7	15	3,0	2,0	6,0	17,0	250	1,9	22030.0306
M 8	3,8	18	4,0	2,0	16,0	33,0	250	4,2	22030.0308
M10	4,5	23	5,0	2,5	19,0	42,0	250	8,4	22030.0310
M12	6,2	26	6,0	3,5	22,0	57,0	250	13,0	22030.0312
M16	8,5	33	8,0	4,5	38,0	78,0	250	32,0	22030.0316
M20	10,0	43	10,0	6,5	39,0	81,0	250	68,0	22030.0320
M24	13,0	48	12,0	8,0	72,0	155,0	250	104,0	22030.0324
不銹鋼，增加彈簧荷重									
M 6	2,7	15	3,0	2,0	11,0	25,0	250	1,9	22030.0346
M 8	3,8	18	4,0	2,0	23,0	59,0	250	4,2	22030.0348
M10	4,5	23	5,0	2,5	20,0	54,0	250	8,4	22030.0350
M12	6,2	26	6,0	3,5	38,0	96,0	250	13,0	22030.0352
M16	8,5	33	8,0	4,5	50,0	100,0	250	32,0	22030.0356
M20	10,0	43	10,0	6,5	52,0	133,0	250	68,0	22030.0360
M24	13,0	48	12,0	8,0	91,0	223,0	250	108,0	22030.0364

¹⁾ 統計平均值

應用範例



遵守

有關詳細的合規信息，請選擇所需的貨號。