

绞鏈 • elongated on both sides

25165.0010



產品描述

The different versions cover many applications that require a low load.

These metal hinges are characterised by their simple design and the different versions:

- without bores
- with bores
- with bores for countersunk screws

The version without bores can be assembled by welding or by inserting a specific drilling pattern.

材質

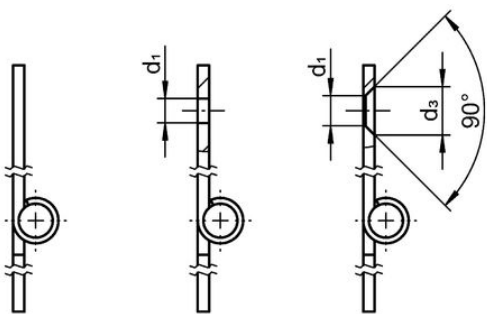
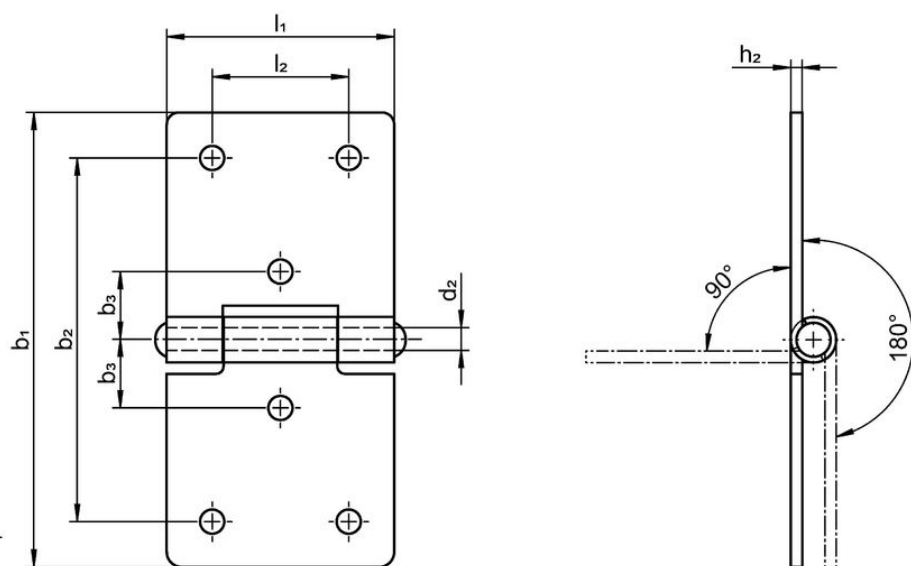
本體

- 不銹鋼 1.4301

軸

- 不銹鋼 1.4301

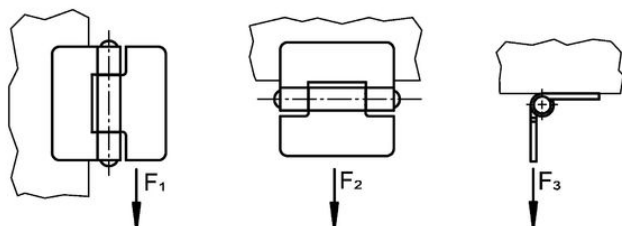
圖面




picture 1

picture 2

picture 3



訂單資訊

b <sub>1</sub>	l <sub>1</sub>	尺寸			夾持力				品號
		d <sub>2</sub>	h <sub>1</sub> ~	h <sub>2</sub>	F <sub>1</sub> ~	F <sub>2</sub> ~	F <sub>3</sub> ~		
		[mm]				[N]		[g]	
without bores – 相片 1, 不銹鋼									
120	60	6	10	2	1100	2500	1000	139	25165.0010

遵守

符合 RoHS

符合指令 2011/65/EU 和指令 2015/863

不含 SVHC 物質

不含超過 0.1% w/w 的 SVHC 物質 - 截至 2024 年 1 月 23 日的 SVHC 清單。

不含 65 號提案物質

不包括 65 號提案物質

<https://www.P65Warnings.ca.gov/>

不含衝突礦物

本產品不含來自剛果民主共和國或鄰近國家的任何被指定為“衝突礦物”的物質，例如鈮、錫、金或鎢。