

## Kulknopp • Metall, liknande DIN 319

EH 24561.



### Produktbeskrivning

#### Material

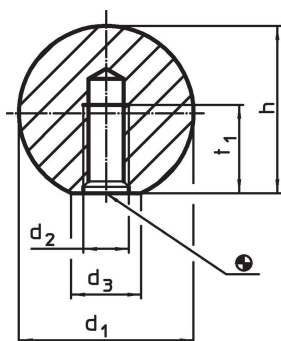
- Stål, polerad, blank
- Rostfritt stål 1.4305, mattpolerat
- Aluminium, polerad

#### Mer information

#### Not

Tillägg DIN 319 Form C om metall versioner.

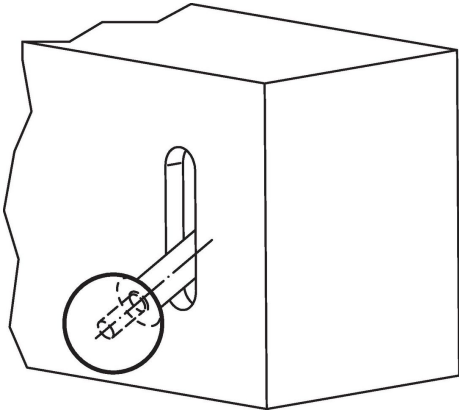
### Ritning



### Orderinformation

d <sub>1</sub>	d <sub>2</sub>	Dimension			t <sub>1</sub> min.	[g]	Art.nr.
		d <sub>3</sub> ~ [mm]	h ~				
<b>Stål</b>							
16	M 4	8	15,0		7,0	16	<a href="#">24561.0016</a>
20	M 5	12	18,0		9,0	26	<a href="#">24561.0020</a>
25	M 6	15	22,5		11,0	58	<a href="#">24561.0025</a>
32	M 8	18	29,0		14,5	116	<a href="#">24561.0032</a>
40	M10	22	37,0		18,0	241	<a href="#">24561.0040</a>
50	M12	27	46,0		21,0	475	<a href="#">24561.0050</a>
<b>Rostfritt stål</b>							
16	M 4	8	15,0		7,0	16	<a href="#">24561.0216</a>
20	M 5	12	18,0		9,0	26	<a href="#">24561.0220</a>
25	M 6	15	22,5		11,0	58	<a href="#">24561.0225</a>
32	M 8	18	29,0		14,5	116	<a href="#">24561.0232</a>
40	M10	22	37,0		18,0	241	<a href="#">24561.0240</a>
<b>Aluminium Al</b>							
16	M 4	8	15,0		7,0	16	<a href="#">24561.0116</a>
20	M 5	12	18,0		9,0	26	<a href="#">24561.0120</a>
25	M 6	15	22,5		11,0	58	<a href="#">24561.0125</a>
32	M 8	18	29,0		14,5	116	<a href="#">24561.0132</a>
40	M10	22	37,0		18,0	241	<a href="#">24561.0140</a>
50	M12	27	46,0		21,0	475	<a href="#">24561.0150</a>

## Användningsexempel



## Överensstämmelse

För detaljerad överensstämmelseinformation, välj önskat artikelnummer.