

Mâner de tracțiune EH 24710.



Descrierea produsului

Mânerile de tracțiune sunt utilizate unde este necesară limitarea forței de acționare. Mânerul, similar cu mânerul palmiform / șuruburile cu mâner palmiform au un mecanism de cuplu intern care permite înșurubarea cu o forță limitată. Atingerea cuplului duce la "auto-blocare". Pentru eliberarea cuplului nu există limită de forță. Aceste mâner combină funcționalitatea unei chei tip clichet cu forma modernă și ergonomică a mânerelor palmiforme / șuruburilor cu mâner palmiform.

Material

Capac

- Termoplastice PA 6, gri, similar cu RAL 7035

Mecanism de cuplu

- Oțel, călit

Mâner

- Aluminiu anodizat, negru

Element intern

- Oțel, brunat

Șurub

- Oțel, brunat

Mai multe informații

Produse asociate

- Mâner de tracțiune cu trei colțuri

Desen

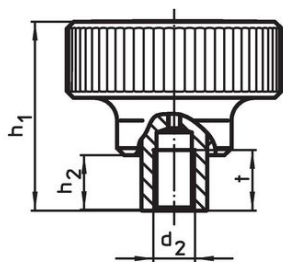


Figura 1

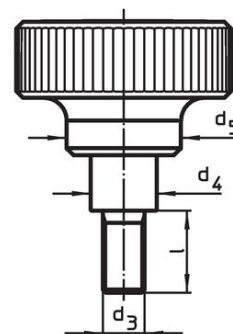
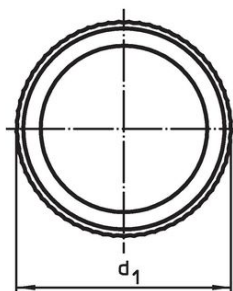
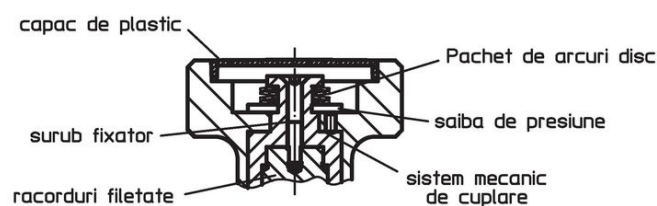


Figura 2



Informații comandă

Dimensiuni									max. [°C]	Moment strângere +/- 10% max. [Nm]	[g]	Ref. Nr.	
d ₁	d ₂	d ₃	l	d ₄	d ₅	h ₁	h ₂	t					
cu filet interior – figura 1													
34	M 3	–	–	10,0	21	37,5	9,5	7	100	1,0	48	24710.0020	
34	M 4	–	–	10,0	21	37,5	9,5	9	100	1,0	60	24710.0022	
34	M 5	–	–	10,0	21	37,5	9,5	9	100	1,0	62	24710.0024	
34	M 6	–	–	10,0	21	37,5	9,5	9	100	1,0	60	24710.0026	
42	M 6	–	–	13,5	27	43,5	11,5	11	100	2,0	111	24710.0030	
42	M 8	–	–	13,5	27	43,5	11,5	11	100	2,0	112	24710.0032	
52	M10	–	–	19,0	32	54,0	15,5	17	100	3,0	221	24710.0040	
52	M12	–	–	19,0	32	54,0	15,5	17	100	3,0	208	24710.0042	

d ₁	d ₂	d ₃	l	Dimensiuni					t	max. [°C]	Moment strângere +/- 10% max. [Nm]	[g]	Ref. Nr.
				d ₄	d ₅	h ₁	h ₂	[mm]					
62	M10	–	–	19,0	33	54,0	15,5	17	100	4,0	244	24710.0050	
62	M12	–	–	19,0	33	54,0	15,5	17	100	4,0	285	24710.0052	
62	M10	–	–	19,0	33	54,0	15,5	17	100	5,5	245	24710.0060	
62	M12	–	–	19,0	33	54,0	15,5	17	100	5,5	285	24710.0062	
cu șurub – figura 2													
34	–	M 5	12	10,0	21	37,5	9,5	–	100	1,0	62	24710.0300	
34	–	M 5	16	10,0	21	37,5	9,5	–	100	1,0	63	24710.0301	
34	–	M 5	20	10,0	21	37,5	9,5	–	100	1,0	60	24710.0302	
34	–	M 5	25	10,0	21	37,5	9,5	–	100	1,0	64	24710.0303	
34	–	M 5	32	10,0	21	37,5	9,5	–	100	1,0	65	24710.0304	
34	–	M 6	12	10,0	21	37,5	9,5	–	100	1,0	60	24710.0305	
34	–	M 6	16	10,0	21	37,5	9,5	–	100	1,0	65	24710.0306	
34	–	M 6	20	10,0	21	37,5	9,5	–	100	1,0	65	24710.0307	
34	–	M 6	25	10,0	21	37,5	9,5	–	100	1,0	67	24710.0308	
34	–	M 6	32	10,0	21	37,5	9,5	–	100	1,0	70	24710.0309	
42	–	M 8	16	13,5	27	43,5	11,5	–	100	2,0	152	24710.0400	
42	–	M 8	20	13,5	27	43,5	11,5	–	100	2,0	153	24710.0401	
42	–	M 8	25	13,5	27	43,5	11,5	–	100	2,0	123	24710.0402	
42	–	M 8	32	13,5	27	43,5	11,5	–	100	2,0	158	24710.0403	
42	–	M 8	40	13,5	27	43,5	11,5	–	100	2,0	128	24710.0404	
42	–	M10	20	13,5	27	43,5	11,5	–	100	2,0	120	24710.0405	
42	–	M10	25	13,5	27	43,5	11,5	–	100	2,0	120	24710.0406	
42	–	M10	32	13,5	27	43,5	11,5	–	100	2,0	131	24710.0407	
42	–	M10	40	13,5	27	43,5	11,5	–	100	2,0	179	24710.0408	
42	–	M10	50	13,5	27	43,5	11,5	–	100	2,0	187	24710.0409	
52	–	M10	25	19,0	32	54,0	15,5	–	100	3,0	241	24710.0500	
52	–	M10	32	19,0	32	54,0	15,5	–	100	3,0	246	24710.0501	
52	–	M10	40	19,0	32	54,0	15,5	–	100	3,0	248	24710.0502	
52	–	M10	50	19,0	32	54,0	15,5	–	100	3,0	254	24710.0503	
52	–	M10	63	19,0	32	54,0	15,5	–	100	3,0	254	24710.0504	
52	–	M12	25	19,0	32	54,0	15,5	–	100	3,0	251	24710.0505	
52	–	M12	32	19,0	32	54,0	15,5	–	100	3,0	254	24710.0506	
52	–	M12	40	19,0	32	54,0	15,5	–	100	3,0	262	24710.0507	
52	–	M12	50	19,0	32	54,0	15,5	–	100	3,0	270	24710.0508	
52	–	M12	63	19,0	32	54,0	15,5	–	100	3,0	274	24710.0509	
62	–	M10	25	19,0	33	54,0	15,5	–	100	4,0	334	24710.0600	
62	–	M10	32	19,0	33	54,0	15,5	–	100	4,0	339	24710.0601	
62	–	M10	40	19,0	33	54,0	15,5	–	100	4,0	341	24710.0602	
62	–	M10	50	19,0	33	54,0	15,5	–	100	4,0	347	24710.0603	
62	–	M10	63	19,0	33	54,0	15,5	–	100	4,0	355	24710.0604	
62	–	M12	25	19,0	33	54,0	15,5	–	100	4,0	344	24710.0605	
62	–	M12	32	19,0	33	54,0	15,5	–	100	4,0	347	24710.0606	
62	–	M12	40	19,0	33	54,0	15,5	–	100	4,0	355	24710.0607	
62	–	M12	50	19,0	33	54,0	15,5	–	100	4,0	363	24710.0608	
62	–	M12	63	19,0	33	54,0	15,5	–	100	4,0	367	24710.0609	
62	–	M10	25	19,0	33	54,0	15,5	–	100	5,5	266	24710.0700	
62	–	M10	32	19,0	33	54,0	15,5	–	100	5,5	339	24710.0701	
62	–	M10	40	19,0	33	54,0	15,5	–	100	5,5	277	24710.0702	
62	–	M10	50	19,0	33	54,0	15,5	–	100	5,5	280	24710.0703	
62	–	M10	63	19,0	33	54,0	15,5	–	100	5,5	355	24710.0704	
62	–	M12	25	19,0	33	54,0	15,5	–	100	5,5	344	24710.0705	
62	–	M12	32	19,0	33	54,0	15,5	–	100	5,5	347	24710.0706	
62	–	M12	40	19,0	33	54,0	15,5	–	100	5,5	355	24710.0707	
62	–	M12	50	19,0	33	54,0	15,5	–	100	5,5	363	24710.0708	
62	–	M12	63	19,0	33	54,0	15,5	–	100	5,5	367	24710.0709	

Reclamație

Conform RoHS

Conține plumb – conform excepțiilor 6a / 6b / 6c.

Conține substanțe SVHC >0,1% w/w

Conține plumb - lista SVHC [REACH] din 23.01.2024

Conține substanțe din Declarația 65



Prin expunere plumbul poate provoca cancer și afectarea fertilității
<https://www.P65Warnings.ca.gov/>

Nu conține Minerale de conflict

Acest produs nu conține substanțe desemnate drept „minerale de conflict” precum tantalul, staniul, aurul sau wolfram din Republica Democratică Congo sau din țările adiacente.