

Bucșe de poziționare • fără guler, DIN 179 A EH 23112.



Descrierea produsului

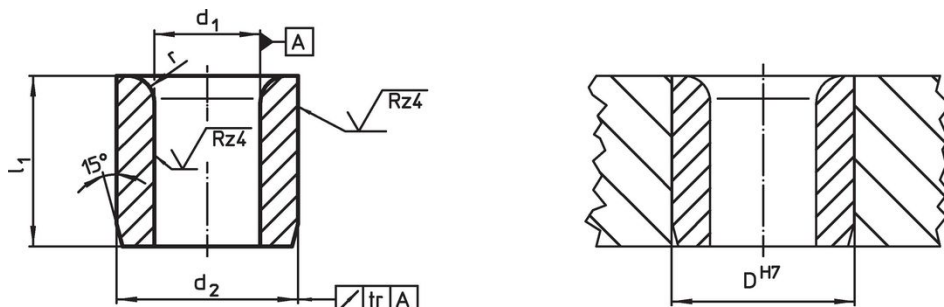
De poziționare sau de centrare burghie, utilizate pentru a găuri în aceeași poziție pentru a asigura repetabilitate.

Bucșele de poziționare, calite sau grunduite, pot fi utilizate ca și ghidaje rezistente la uzură pentru mașini de găurit, arbori, etc.

Material


- Oțel cementat, călit


Desen



Informații comandă

Dimensiuni				Poziție orificiu	[g]	Ref. Nr.
d ₁ F7	l ₁ [mm]	d ₂ n6	r	D H7 [mm]		
2,0	6	5	1,0	5	0,7	23112.0520
2,0	9	5	1,0	5	1,1	23112.0521
2,1	6	5	1,0	5	0,7	23112.0522
2,1	9	5	1,0	5	1,1	23112.0523
2,5	6	5	1,0	5	0,7	23112.0524
2,5	9	5	1,0	5	1,0	23112.0525
3,0	8	6	1,0	6	1,9	23112.0530
3,0	12	6	1,0	6	1,9	23112.0531
3,0	16	6	1,0	6	2,6	23112.0532
3,1	8	6	1,0	6	1,2	23112.0533
3,1	12	6	1,0	6	1,9	23112.0534
3,1	16	6	1,0	6	3,2	23112.0535
3,5	8	7	1,0	7	2,4	23112.0536
3,5	12	7	1,0	7	2,6	23112.0537
3,5	16	7	1,0	7	3,6	23112.0538
4,0	8	7	1,0	7	1,5	23112.0540
4,0	12	7	1,0	7	3,0	23112.0541
4,0	16	7	1,0	7	3,2	23112.0542
4,1	8	8	1,0	8	2,2	23112.0543
4,1	12	8	1,0	8	3,4	23112.0544
4,1	16	8	1,0	8	4,6	23112.0545
4,5	8	8	1,0	8	2,1	23112.0546
4,5	12	8	1,0	8	3,1	23112.0547
4,5	16	8	1,0	8	4,2	23112.0548
5,0	8	8	1,0	8	1,8	23112.0550
5,0	12	8	1,0	8	3,4	23112.0551
5,0	16	8	1,0	8	3,7	23112.0552
5,1	10	10	1,5	10	4,4	23112.0553
5,1	16	10	1,5	10	7,1	23112.0554
5,1	20	10	1,5	10	8,9	23112.0555
5,5	10	10	1,5	10	4,1	23112.0556

d ₁ F7	Dimensiuni			r	Poziție orificiu D H7 [mm]	 [g]	Ref. Nr.
	l ₁ [mm]	d ₂ n6 [mm]					
5,5	16	10	1,5	10	6,7	23112.0557	
5,5	20	10	1,5	10	8,4	23112.0558	
6,0	10	10	1,5	10	3,8	23112.0560	
6,0	16	10	1,5	10	6,1	23112.0561	
6,0	20	10	1,5	10	7,7	23112.0562	
6,1	10	12	1,5	12	6,3	23112.0563	
6,1	16	12	1,5	12	10,0	23112.0564	
6,1	20	12	1,5	12	13,0	23112.0565	
6,5	10	12	1,5	12	6,0	23112.0566	
6,5	16	12	1,5	12	9,7	23112.0567	
6,5	20	12	1,5	12	12,0	23112.0568	
7,0	10	12	1,5	12	5,6	23112.0570	
7,0	16	12	1,5	12	9,1	23112.0571	
7,0	20	12	1,5	12	11,0	23112.0572	
7,1	10	12	1,5	12	5,5	23112.0573	
7,1	16	12	1,5	12	9,0	23112.0574	
7,1	20	12	1,5	12	11,0	23112.0575	
7,5	10	12	1,5	12	5,1	23112.0576	
7,5	16	12	1,5	12	8,4	23112.0577	
7,5	20	12	1,5	12	11,0	23112.0578	
8,0	10	12	1,5	12	4,7	23112.0580	
8,0	16	12	1,5	12	7,6	23112.0581	
8,0	20	12	1,5	12	9,6	23112.0582	
8,1	12	15	2,0	15	11,0	23112.0583	
8,1	20	15	2,0	15	19,0	23112.0584	
8,1	25	15	2,0	15	24,0	23112.0585	
8,5	12	15	2,0	15	11,0	23112.0586	
8,5	20	15	2,0	15	18,0	23112.0587	
8,5	25	15	2,0	15	23,0	23112.0588	
9,0	12	15	2,0	15	10,0	23112.0590	
9,0	20	15	2,0	15	17,0	23112.0591	
9,0	25	15	2,0	15	22,0	23112.0592	
9,1	12	15	2,0	15	10,0	23112.0593	
9,1	20	15	2,0	15	17,0	23112.0594	
9,1	25	15	2,0	15	21,0	23112.0595	
9,5	12	15	2,0	15	9,5	23112.0596	
9,5	20	15	2,0	15	16,0	23112.0597	
9,5	25	15	2,0	15	20,0	23112.0598	
10,0	12	15	2,0	15	8,8	23112.0600	
10,0	20	15	2,0	15	15,0	23112.0601	
10,0	25	15	2,0	15	19,0	23112.0602	
10,1	12	18	2,0	18	16,0	23112.0603	
10,1	20	18	2,0	18	27,0	23112.0604	
10,1	25	18	2,0	18	33,0	23112.0605	
10,5	12	18	2,0	18	15,0	23112.0606	
10,5	20	18	2,0	18	26,0	23112.0607	
10,5	25	18	2,0	18	32,0	23112.0608	
11,0	12	18	2,0	18	14,0	23112.0610	
11,0	20	18	2,0	18	24,0	23112.0611	
11,0	25	18	2,0	18	31,0	23112.0612	
11,1	12	18	2,0	18	14,0	23112.0613	
11,1	20	18	2,0	18	24,0	23112.0614	
11,1	25	18	2,0	18	30,0	23112.0615	
11,5	12	18	2,0	18	13,0	23112.0616	
11,5	20	18	2,0	18	23,0	23112.0617	
11,5	25	18	2,0	18	29,0	23112.0618	
12,0	12	18	2,0	18	13,0	23112.0620	
12,0	20	18	2,0	18	22,0	23112.0621	
12,0	25	18	2,0	18	27,0	23112.0622	
12,1	16	22	2,0	22	32,0	23112.0623	
12,1	28	22	2,0	22	57,0	23112.0624	

d ₁ F7	Dimensiuni			r	Poziție orificiu D H7 [mm]	 [g]	Ref. Nr.
	l ₁ [mm]	d ₂ n6					
12,1	36	22		2,0	22	74,0	23112.0625
12,5	16	22		2,0	22	31,0	23112.0626
12,5	28	22		2,0	22	66,0	23112.0627
12,5	36	22		2,0	22	69,0	23112.0628
13,0	16	22		2,0	22	30,0	23112.0630
13,0	28	22		2,0	22	53,0	23112.0631
13,0	36	22		2,0	22	69,0	23112.0632
14,0	16	22		2,0	22	27,0	23112.0640
14,0	28	22		2,0	22	49,0	23112.0641
14,0	36	22		2,0	22	63,0	23112.0642
15,0	16	22		2,0	22	24,0	23112.0650
15,0	28	22		2,0	22	44,0	23112.0651
15,0	36	22		2,0	22	56,0	23112.0652
16,0	16	26		2,0	26	45,0	23112.0660
16,0	28	26		2,0	26	71,0	23112.0661
16,0	36	26		2,0	26	92,0	23112.0662
16,1	16	26		2,0	26	40,0	23112.0663
16,1	28	26		2,0	26	71,0	23112.0664
16,1	36	26		2,0	26	91,0	23112.0665
16,5	16	26		2,0	26	39,0	23112.0666
16,5	28	26		2,0	26	68,0	23112.0667
16,5	36	26		2,0	26	88,0	23112.0668
17,0	16	26		2,0	26	37,0	23112.0671
17,0	28	26		2,0	26	65,0	23112.0672
17,0	36	26		2,0	26	84,0	23112.0673
18,0	16	26		2,0	26	33,0	23112.0681
18,0	28	26		2,0	26	59,0	23112.0682
18,0	36	26		2,0	26	76,0	23112.0683
19,0	20	30		3,0	30	64,0	23112.0691
19,0	36	30		3,0	30	117,0	23112.0692
19,0	45	30		3,0	30	147,0	23112.0693
20,0	20	30		3,0	30	59,0	23112.0701
20,0	36	30		3,0	30	108,0	23112.0702
20,0	45	30		3,0	30	136,0	23112.0703
20,1	20	30		3,0	30	59,0	23112.0704
20,1	36	30		3,0	30	108,0	23112.0705
20,1	45	30		3,0	30	135,0	23112.0706
22,0	20	30		3,0	30	49,0	23112.0721
22,0	36	30		3,0	30	90,0	23112.0722
22,0	45	30		3,0	30	113,0	23112.0723
25,0	20	35		3,0	35	71,0	23112.0751
25,0	36	35		3,0	35	130,0	23112.0752
25,0	45	35		3,0	35	163,0	23112.0753
30,0	25	42		3,0	42	129,0	23112.0801
30,0	45	42		3,0	42	235,0	23112.0802
30,0	56	42		3,0	42	293,0	23112.0803

Reclamație

Conform RoHS

Conține plumb – conform excepțiilor 6a / 6b / 6c.

Conține substanțe SVHC >0,1% w/w

Conține plumb - lista SVHC [REACH] din 27.06.2024.

Conține substanțe din Declarația 65



Prin expunere plumbul poate provoca cancer și afectarea fertilității
<https://www.P65Warnings.ca.gov/>

Nu conține Minerale de conflict

Acest produs nu conține substanțe desemnate drept „minerale de conflict” precum tantalul, staniul, aurul sau wolfram din Republica Democratică Congo sau din țările adiacente.