

Piuliță pentru canal T • DIN 508 EH 23010.



Descrierea produsului

Aceste piulițe canal T (piulițe de canal) sunt fabricate conform DIN 508. Gama conține și piulițe cu dimensiuni care nu sunt incluse în acest DIN.

Material

- Oțel tratat termic, calitatea 8, strălucitor
- Oțel tratat termic, cu revenire, calitatea 10, brunat
- Oțel inoxidabil 1.4301

Asamblare

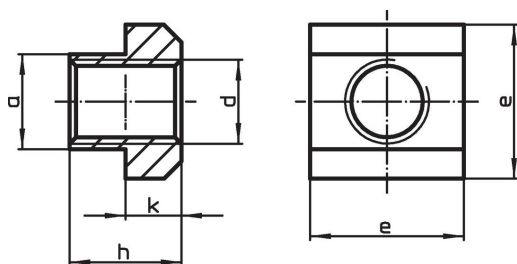
Sarcina integrală a piulițelor pentru canale T presupune, ca înfiletarea se face pe întreaga lungime a filetului piuliței canal T.

Mai multe informații

Note

Variantă specială la cerere.


Desen




Informații comandă

Mărimea nominală canal [mm]	d	Dimensiuni				pentru canale T DIN 650 [mm]	Forța verificare conf. DIN 508 F min. [kN]	[g]	Ref. Nr.
		a	e	h	k				
Oțel tratat termic, calitatea 8, strălucitor									
5	M 4	4,6	9	6,5	3	5	7,0	2,4	23010.0051
6	M 5	5,6	10	8,0	4	6	11,4	3,4	23010.0061
8	M 6	7,6	13	10,0	6	8	16,0	8,3	23010.0081
10	M 6	9,6	15	12,0	6	10	16,0	14,0	23010.0103 ¹⁾
10	M 8	9,6	15	12,0	6	10	29,0	12,0	23010.0101
12	M 8	11,6	18	14,0	7	12	29,0	23,0	23010.0123 ¹⁾
12	M10	11,6	18	14,0	7	12	46,0	20,0	23010.0121
14	M10	13,6	22	16,0	8	14	46,0	38,0	23010.0143 ¹⁾
14	M12	13,6	22	16,0	8	14	67,0	34,0	23010.0141
16	M12	15,6	25	18,0	9	16	67,0	55,0	23010.0163 ¹⁾
16	M14	15,6	25	18,0	9	16	–	49,0	23010.0161 ¹⁾
18	M14	17,6	28	20,0	10	18	–	74,0	23010.0183 ¹⁾
18	M16	17,6	28	20,0	10	18	128,0	68,0	23010.0181
20	M16	19,6	32	24,0	12	20	128,0	116,0	23010.0203 ¹⁾
20	M18	19,6	32	24,0	12	20	–	107,0	23010.0201 ¹⁾
22	M18	21,6	35	28,0	14	22	–	162,0	23010.0223 ¹⁾
22	M20	21,6	35	28,0	14	22	196,0	149,0	23010.0221
24	M20	23,6	40	32,0	16	24	196,0	236,0	23010.0243 ¹⁾
24	M22	23,6	40	32,0	16	24	–	221,0	23010.0241 ¹⁾
28	M24	27,6	44	36,0	18	28	282,0	317,0	23010.0281

¹⁾ Standardul DIN nu include aceste dimensiuni.

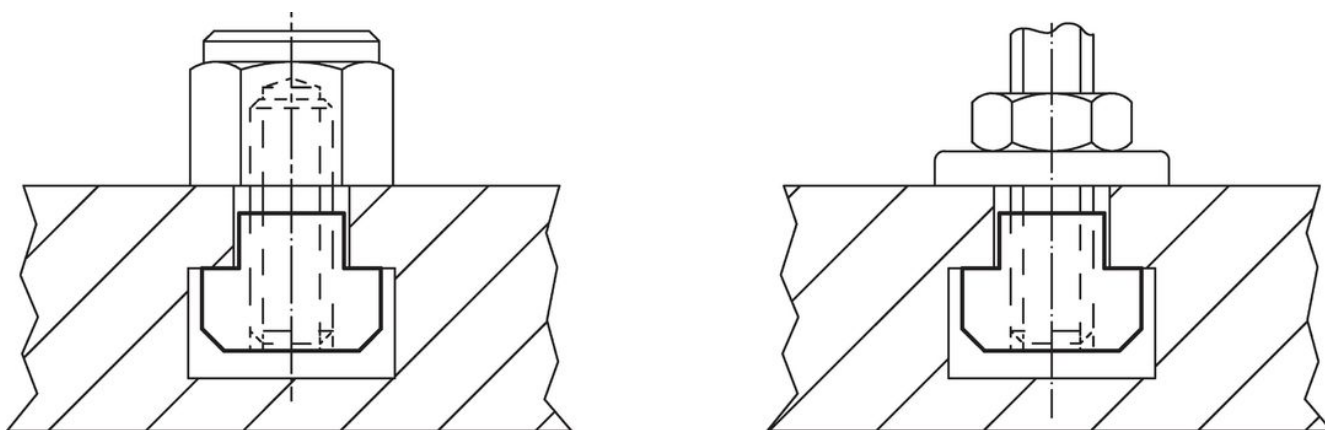
Mărimea nominală canal [mm]	d	Dimensiuni				k	pentru canale T DIN 650 [mm]	Forța verificare conf. DIN 508 F min. [kN]	 [g]	Ref. Nr.
		a	e	h	[mm]					
36	M30	35,5	54	44,0	22	36	448,0	585,0	23010.0361	
42	M36	41,5	65	52,0	26	42	653,0	1000,0	23010.0421	
48	M42	47,5	75	60,0	30	48	653,0	1500,0	23010.0481	
54	M48	53,4	85	70,0	34	54	653,0	2264,0	23010.0541	
Oțel tratat termic, cu revenire, calitatea 10, brunat										
5	M 4	4,6	9	6,5	3	5	7,0	2,4	23010.0052	
6	M 5	5,6	10	8,0	4	6	11,4	3,4	23010.0062	
8	M 6	7,6	13	10,0	6	8	16,0	8,3	23010.0082	
10	M 6	9,6	15	12,0	6	10	16,0	14,0	23010.0104 ¹⁾	
10	M 8	9,6	15	12,0	6	10	29,0	12,0	23010.0102	
12	M 8	11,6	18	14,0	7	12	29,0	23,0	23010.0124 ¹⁾	
12	M10	11,6	18	14,0	7	12	46,0	20,0	23010.0122	
14	M 6	13,6	22	16,0	8	14	16,0	43,0	23010.0146 ¹⁾	
14	M 8	13,6	22	16,0	8	14	29,0	41,0	23010.0145 ¹⁾	
14	M10	13,6	22	16,0	8	14	46,0	38,0	23010.0144 ¹⁾	
14	M12	13,6	22	16,0	8	14	67,0	34,0	23010.0142	
16	M 8	15,6	25	18,0	9	16	29,0	62,0	23010.0166 ¹⁾	
16	M10	15,6	25	18,0	9	16	46,0	58,0	23010.0165 ¹⁾	
16	M12	15,6	25	18,0	9	16	67,0	55,0	23010.0164 ¹⁾	
16	M14	15,6	25	18,0	9	16	–	49,0	23010.0162 ¹⁾	
18	M 8	17,6	28	20,0	10	18	29,0	89,0	23010.0187 ¹⁾	
18	M10	17,6	28	20,0	10	18	46,0	85,0	23010.0186 ¹⁾	
18	M12	17,6	28	20,0	10	18	67,0	98,0	23010.0185 ¹⁾	
18	M14	17,6	28	20,0	10	18	–	74,0	23010.0184 ¹⁾	
18	M16	17,6	28	20,0	10	18	128,0	68,0	23010.0182	
20	M12	19,6	32	24,0	12	20	67,0	131,0	23010.0205 ¹⁾	
20	M16	19,6	32	24,0	12	20	128,0	116,0	23010.0204 ¹⁾	
20	M18	19,6	32	24,0	12	20	–	107,0	23010.0202 ¹⁾	
22	M12	21,6	35	28,0	14	22	67,0	189,0	23010.0225 ¹⁾	
22	M16	21,6	35	28,0	14	22	128,0	172,0	23010.0226 ¹⁾	
22	M18	21,6	35	28,0	14	22	–	162,0	23010.0224 ¹⁾	
22	M20	21,6	35	28,0	14	22	196,0	149,0	23010.0222	
24	M16	23,6	40	32,0	16	24	128,0	262,0	23010.0246 ¹⁾	
24	M20	23,6	40	32,0	16	24	196,0	236,0	23010.0244 ¹⁾	
24	M22	23,6	40	32,0	16	24	–	221,0	23010.0242 ¹⁾	
28	M16	27,6	44	36,0	18	28	128,0	375,0	23010.0286 ¹⁾	
28	M20	27,6	44	36,0	18	28	196,0	349,0	23010.0284 ¹⁾	
28	M22	27,6	44	36,0	18	28	–	332,0	23010.0283 ¹⁾	
28	M24	27,6	44	36,0	18	28	282,0	317,0	23010.0282	
32	M27	31,5	50	40,0	20	32	–	460,0	23010.0322 ¹⁾	
36	M24	35,5	54	44,0	22	36	282,0	663,0	23010.0364 ¹⁾	
36	M30	35,5	54	44,0	22	36	448,0	585,0	23010.0362	
42	M36	41,5	65	52,0	26	42	653,0	1000,0	23010.0422	
48	M42	47,5	75	60,0	30	48	653,0	1500,0	23010.0482	
54	M48	53,4	85	70,0	34	54	653,0	2264,0	23010.0542	

¹⁾ Standardul DIN nu include aceste dimensiuni.

Mărimea nominală canal [mm]	d	Dimensiuni				k	pentru canale T DIN 650 [mm]	Forța verificare conf. DIN 508 F min. [kN]	 [g]	Ref. Nr.
		a	e	h	[mm]					
Oțel inoxidabil 1.4301										
8	M 6	7,6	13	10,0	6	8	16,0	8,3	23010.0721	
10	M 8	9,6	15	12,0	6	10	29,0	12,0	23010.0731	
12	M10	11,6	18	14,0	7	12	46,0	20,0	23010.0741	
14	M12	13,6	22	16,0	8	14	67,0	34,0	23010.0751	
16	M14	15,6	25	18,0	9	16	–	49,0	23010.0761 ¹⁾	
18	M16	17,6	28	20,0	10	18	128,0	68,0	23010.0781	

¹⁾ Standardul DIN nu include aceste dimensiuni.

Exemplu de aplicație



Reclamație

Conform RoHS

Sunt conforme Directivei 2011/65/UE și Directivei 2015/863.

Nu conține materiale SVHC

Nu conține substanțe SVHC cu mai mult de 0,1% w/w - lista SVHC din 27.06.2024.

Nu conține substanțe din Declarația 65

Nu conține substanțe din Declarația 65.

<https://www.P65Warnings.ca.gov/>

Nu conține Minerale de conflict

Acest produs nu conține substanțe desemnate drept „minerale de conflict” precum tantalul, staniul, aurul sau wolfram din Republica Democratică Congo sau din țările adiacente.