

Șurub cu ochi • DIN 444, forma B EH 22980.



Descrierea produsului

Ochet asemănător cu DIN 444, dar este din oțel cu duritate clasa 8.8. Varianta din oțel inoxidabil A2-50 cu rezistență la tracțiune de min. 500 N/mm².

Material

- Oțel tratat termic, cu revenire, calitatea 8.8, negru
- Oțel inoxidabil 1.4301

Mai multe informații

Note

Variantă specială la cerere.

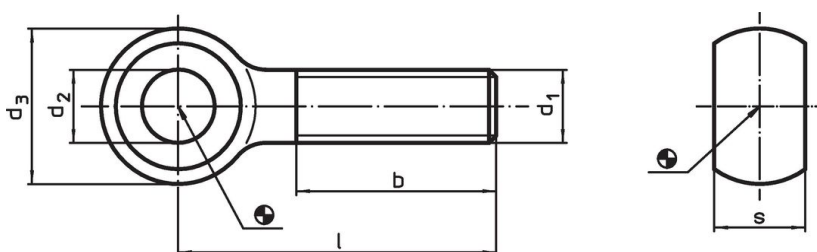
Referințe

Pentru informații referitoare la cuplul de pornire vă rugăm consultați anexa - date tehnice.


Produse asociate

- Șurub cu ochi, DIN 444, forma B, calitatea 8.8

Desen



Informații comandă

d ₁	l	Dimensiuni d ₂ H9 [mm]	d ₃	b	s	 [g]	Ref. Nr.
Oțel tratat termic							
M 5	25	5	12	16	6	5,6	22980.0202
M 5	30	5	12	16	6	6,4	22980.0203
M 5	35	5	12	16	6	7,1	22980.0204
M 5	40	5	12	16	6	7,9	22980.0205
M 6	30	6	14	18	7	9,5	22980.0212
M 6	40	6	14	18	7	11,0	22980.0214
M 6	50	6	14	18	7	14,0	22980.0216
M 6	60	6	14	18	7	16,0	22980.0218
M 6	80	6	14	18	7	20,0	22980.0222
M 8	40	8	18	22	9	22,0	22980.0232
M 8	50	8	18	22	9	26,0	22980.0234
M 8	60	8	18	22	9	30,0	22980.0236
M 8	80	8	18	22	9	37,0	22980.0240
M 8	100	8	18	22	9	44,0	22980.0244
M10	50	10	20	26	12	40,0	22980.0252
M10	60	10	20	26	12	43,0	22980.0254
M10	75	10	20	26	12	51,0	22980.0257
M10	100	10	20	26	12	67,0	22980.0262
M10	120	10	20	26	12	72,0	22980.0266
M12	50	12	25	30	14	59,0	22980.0272
M12	60	12	25	30	14	68,0	22980.0274
M12	80	12	25	30	14	85,0	22980.0278
M12	100	12	25	30	14	102,0	22980.0282
M12	120	12	25	30	14	119,0	22980.0286
M16	60	16	32	38	17	128,0	22980.0292
M16	80	16	32	38	17	159,0	22980.0294

d ₁	l	Dimensiuni				s	[g]	Ref. Nr.
		d ₂ H9 [mm]	d ₃	b				
M16	100	16	32	38	17	190,0	22980.0298	
M16	120	16	32	38	17	220,0	22980.0302	
M16	150	16	32	44	17	265,0	22980.0308	
M20	100	18	40	46	22	323,0	22980.0312	
M20	120	18	40	46	22	373,0	22980.0316	
M20	160	18	40	52	22	466,0	22980.0324	
M20	200	18	40	52	22	562,0	22980.0332	
M24	100	22	45	54	25	443,0	22980.0342	
M24	120	22	45	54	25	512,0	22980.0346	
M24	160	22	45	60	25	649,0	22980.0354	
M24	200	22	45	60	25	787,0	22980.0362	
Oțel inoxidabil								
M 5	25	5	12	16	6	5,6	22980.0402	
M 5	30	5	12	16	6	6,4	22980.0403	
M 5	35	5	12	16	6	7,1	22980.0404	
M 5	40	5	12	16	6	7,9	22980.0405	
M 6	30	6	14	18	7	9,5	22980.0412	
M 6	40	6	14	18	7	11,0	22980.0414	
M 6	50	6	14	18	7	14,0	22980.0416	
M 6	60	6	14	18	7	16,0	22980.0418	
M 6	80	6	14	18	7	20,0	22980.0422	
M 8	40	8	18	22	9	22,0	22980.0432	
M 8	50	8	18	22	9	26,0	22980.0434	
M 8	60	8	18	22	9	30,0	22980.0436	
M 8	80	8	18	22	9	37,0	22980.0440	
M 8	100	8	18	22	9	44,0	22980.0444	
M10	50	10	20	26	12	40,0	22980.0452	
M10	60	10	20	26	12	43,0	22980.0454	
M10	75	10	20	26	12	51,0	22980.0457	
M10	100	10	20	26	12	67,0	22980.0462	
M10	120	10	20	26	12	72,0	22980.0466	
M12	50	12	25	30	14	59,0	22980.0472	
M12	60	12	25	30	14	68,0	22980.0474	
M12	80	12	25	30	14	85,0	22980.0478	
M12	100	12	25	30	14	102,0	22980.0482	
M12	120	12	25	30	14	119,0	22980.0486	
M16	60	16	32	38	17	128,0	22980.0492	
M16	80	16	32	38	17	159,0	22980.0494	
M16	100	16	32	38	17	190,0	22980.0498	
M16	120	16	32	38	17	220,0	22980.0502	
M16	150	16	32	44	17	265,0	22980.0508	
M20	100	18	40	46	22	323,0	22980.0512	
M20	120	18	40	46	22	373,0	22980.0516	
M20	160	18	40	52	22	466,0	22980.0524	
M20	200	18	40	52	22	562,0	22980.0532	
M24	100	22	45	54	25	443,0	22980.0542	
M24	120	22	45	54	25	512,0	22980.0546	
M24	160	22	45	60	25	649,0	22980.0554	
M24	200	22	45	60	25	787,0	22980.0562	

Reclamație

Conform RoHS

Sunt conforme Directivei 2011/65/UE și Directivei 2015/863.

Nu conțin materiale SVHC

Nu conține substanțe SVHC cu mai mult de 0,1% w/w - lista SVHC din 27.06.2024.

Nu conține substanțe din Declarația 65

Nu conține substanțe din Declarația 65.

<https://www.P65Warnings.ca.gov/>

Nu conține Minerale de conflict

Acest produs nu conține substanțe desemnate drept „minerale de conflict” precum tantalul, staniul, aurul sau wolfram din Republica Democratică Congo sau din țările adiacente.