

Șuruburi de presiune • cu bolț din termoplast

EH 22760.



Descrierea produsului

Șuruburile cu bilă se pot utiliza pentru fixare sau apăsare delicată a pieselor filetate, axelor, arborilor și a pieselor cu suprafața tratată.

Material

Suport

- Termoplastic POM, alb

Șurub

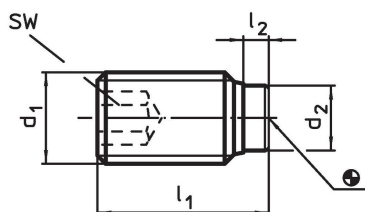
- Oțel, brunat
- Oțel inoxidabil 1.4305

Mai multe informații

Produse asociate


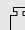
- Șuruburi de presiune, cu bolț din alamă

Desen



Informații comandă

d ₁	Dimensiuni			SW	min. max.		g	Ref. Nr.
	l ₁	l ₂	d ₂		[°C]			
[mm]								
Oțel inoxidabil								
M 3	3,8	0,8	1,5	1,5	-30	80	0,1	22760.0632
M 3	5,8	0,8	1,5	1,5	-30	80	0,3	22760.0634
M 3	8,8	0,8	1,5	1,5	-30	80	0,4	22760.0636
M 3	10,8	0,8	1,5	1,5	-30	80	0,4	22760.0638
M 4	7,0	1,0	2,0	1,5	-30	80	0,3	22760.0642
M 4	9,0	1,0	2,0	2,0	-30	80	0,5	22760.0643
M 4	11,0	1,0	2,0	2,0	-30	80	0,7	22760.0644
M 4	13,0	1,0	2,0	2,0	-30	80	0,7	22760.0645
M 4	17,0	1,0	2,0	2,0	-30	80	1,1	22760.0646
M 5	9,0	1,0	3,0	2,5	-30	80	0,7	22760.0652
M 5	11,0	1,0	3,0	2,5	-30	80	0,9	22760.0653
M 5	13,0	1,0	3,0	2,5	-30	80	1,2	22760.0654
M 5	17,0	1,0	3,0	2,5	-30	80	1,6	22760.0655
M 5	21,0	1,0	3,0	2,5	-30	80	2,2	22760.0656
M 6	11,3	1,3	3,5	3,0	-30	80	1,3	22760.0662
M 6	13,3	1,3	3,5	3,0	-30	80	1,7	22760.0663
M 6	17,3	1,3	3,5	3,0	-30	80	2,2	22760.0664
M 6	21,3	1,3	3,5	3,0	-30	80	3,0	22760.0665
M 6	26,3	1,3	3,5	3,0	-30	80	3,8	22760.0666
M 6	33,3	1,3	3,5	3,0	-30	80	5,1	22760.0667
M 8	13,6	1,6	5,0	4,0	-30	80	2,5	22760.0682
M 8	17,6	1,6	5,0	4,0	-30	80	3,7	22760.0683
M 8	21,6	1,6	5,0	4,0	-30	80	5,0	22760.0684
M 8	26,6	1,6	5,0	4,0	-30	80	6,5	22760.0685
M 8	33,6	1,6	5,0	4,0	-30	80	8,8	22760.0686
M 8	41,6	1,6	5,0	4,0	-30	80	11,0	22760.0687

d ₁	Dimensiuni			SW [mm]	 min. max. [°C]		 [g]	Ref. Nr.
	l ₁ ~ [mm]	l ₂ ~	d ₂					
M10	17,9	1,9	6,5	5,0	-30	80	5,4	22760.0702
M10	21,9	1,9	6,5	5,0	-30	80	7,2	22760.0703
M10	26,9	1,9	6,5	5,0	-30	80	9,9	22760.0704
M10	33,9	1,9	6,5	5,0	-30	80	13,0	22760.0705
M10	41,9	1,9	6,5	5,0	-30	80	17,0	22760.0706
M10	51,9	1,9	6,5	5,0	-30	80	22,0	22760.0707
M12	22,1	2,1	8,0	6,0	-30	80	9,1	22760.0722
M12	27,1	2,1	8,0	6,0	-30	80	13,0	22760.0723
M12	34,1	2,1	8,0	6,0	-30	80	18,0	22760.0724
M12	42,1	2,1	8,0	6,0	-30	80	23,0	22760.0725
M12	52,1	2,1	8,0	6,0	-30	80	30,0	22760.0726
M12	65,1	2,1	8,0	6,0	-30	80	40,0	22760.0727
Oțel								
M 4	7,0	1,0	2,0	1,5	-30	80	0,3	22760.0242
M 4	9,0	1,0	2,0	1,5	-30	80	0,4	22760.0243
M 4	11,0	1,0	2,0	1,5	-30	80	0,6	22760.0244
M 4	13,0	1,0	2,0	1,5	-30	80	0,7	22760.0245
M 4	17,0	1,0	2,0	1,5	-30	80	1,0	22760.0246
M 4	21,0	1,0	2,0	1,5	-30	80	1,3	22760.0247
M 5	9,0	1,0	3,0	2,5	-30	80	0,7	22760.0252
M 5	11,0	1,0	3,0	2,5	-30	80	0,9	22760.0253
M 5	13,0	1,0	3,0	2,5	-30	80	1,2	22760.0254
M 5	17,0	1,0	3,0	2,5	-30	80	1,6	22760.0255
M 5	21,0	1,0	3,0	2,5	-30	80	2,2	22760.0256
M 5	26,0	1,0	3,0	2,5	-30	80	2,6	22760.0257
M 6	11,3	1,3	3,5	3,0	-30	80	1,3	22760.0262
M 6	13,3	1,3	3,5	3,0	-30	80	1,7	22760.0263
M 6	17,3	1,3	3,5	3,0	-30	80	2,2	22760.0264
M 6	21,3	1,3	3,5	3,0	-30	80	3,0	22760.0265
M 6	26,3	1,3	3,5	3,0	-30	80	3,8	22760.0266
M 6	33,3	1,3	3,5	3,0	-30	80	5,1	22760.0267
M 6	41,3	1,3	3,5	3,0	-30	80	6,3	22760.0268
M 6	51,3	1,3	3,5	3,0	-30	80	7,9	22760.0270
M 8	13,6	1,6	5,0	4,0	-30	80	2,5	22760.0282
M 8	17,6	1,6	5,0	4,0	-30	80	3,7	22760.0283
M 8	21,6	1,6	5,0	4,0	-30	80	5,0	22760.0284
M 8	26,6	1,6	5,0	4,0	-30	80	6,5	22760.0285
M 8	33,6	1,6	5,0	4,0	-30	80	8,8	22760.0286
M 8	41,6	1,6	5,0	4,0	-30	80	11,0	22760.0287
M 8	51,6	1,6	5,0	4,0	-30	80	14,0	22760.0288
M 8	64,6	1,6	5,0	4,0	-30	80	18,0	22760.0290
M10	17,9	1,9	6,5	5,0	-30	80	5,4	22760.0302
M10	21,9	1,9	6,5	5,0	-30	80	7,2	22760.0303
M10	26,9	1,9	6,5	5,0	-30	80	9,9	22760.0304
M10	33,9	1,9	6,5	5,0	-30	80	13,0	22760.0305
M10	41,9	1,9	6,5	5,0	-30	80	17,0	22760.0306
M10	51,9	1,9	6,5	5,0	-30	80	22,0	22760.0307
M10	64,9	1,9	6,5	5,0	-30	80	28,0	22760.0308
M10	81,9	1,9	6,5	5,0	-30	80	36,0	22760.0310
M12	22,1	2,1	8,0	6,0	-30	80	9,1	22760.0322
M12	27,1	2,1	8,0	6,0	-30	80	13,0	22760.0323
M12	34,1	2,1	8,0	6,0	-30	80	18,0	22760.0324
M12	42,1	2,1	8,0	6,0	-30	80	23,0	22760.0325
M12	52,1	2,1	8,0	6,0	-30	80	30,0	22760.0326
M12	65,1	2,1	8,0	6,0	-30	80	40,0	22760.0327
M12	82,1	2,1	8,0	6,0	-30	80	53,0	22760.0330
M12	102,1	2,1	8,0	6,0	-30	80	66,0	22760.0332

Reclamație

Pentru detalii suplimentare despre conformitate, vă rugăm să selectați codul produsului dorit.