

## Balamale • elongated on both sides

25165.0250



### Descrierea produsului

The different versions cover many applications that require a low load.

These metal hinges are characterised by their simple design and the different versions:

- without bores
- with bores
- with bores for countersunk screws

The version without bores can be assembled by welding or by inserting a specific drilling pattern.

### Material

#### Corp

- Oțel inoxidabil 1.4301

#### Axe

- Oțel inoxidabil 1.4301

### Desen

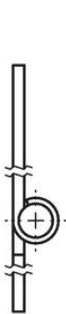
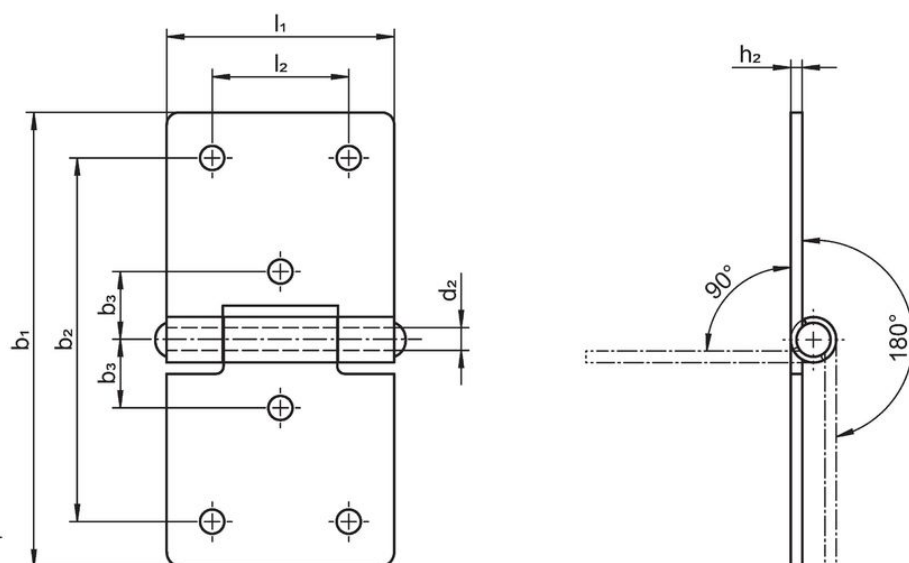


Figura 1

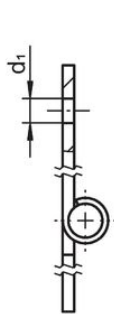


Figura 2

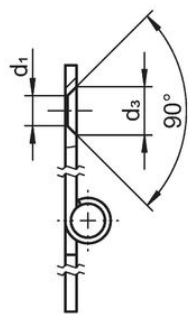
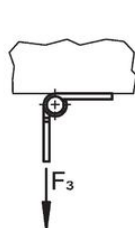
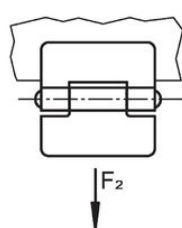
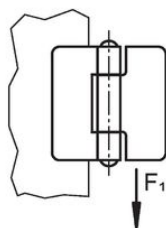


Figura 3



## Informații comandă

| Dimensiuni  |                |                |                |                |                |                |                     |                |                | Forța de susținere  |                            |                     | Ref. Nr. |            |
|---|----------------|----------------|----------------|----------------|----------------|----------------|---------------------|----------------|----------------|---------------------|----------------------------|---------------------|----------|------------|
| b <sub>1</sub>  | l <sub>1</sub> | b <sub>2</sub> | b <sub>3</sub> | d <sub>1</sub> | d <sub>2</sub> | d <sub>3</sub> | h <sub>1</sub><br>~ | h <sub>2</sub> | l <sub>2</sub> | F <sub>1</sub><br>~ | F <sub>2</sub><br>~<br>[N] | F <sub>3</sub><br>~ |          | [g]        |
| with bores for countersunk screws – figura 3, Oțel inoxidabil |                |                |                |                |                |                |                     |                |                |                     |                            |                     |          |            |
| 60  | 30             | 48             | 9              | 4              | 3              | 6,4            | 6                   | 1,5            | 18             | 700                 | 500                        | 450                 | 24       | 25165.0250 |

## Reclamație

## Conform RoHS

Sunt conforme Directivei 2011/65/UE și Directivei 2015/863.

## Nu conține materiale SVHC

Nu conține substanțe SVHC cu mai mult de 0,1% w/w - lista SVHC din 27.06.2024.

## Nu conține substanțe din Declarația 65

Nu conține substanțe din Declarația 65.

<https://www.P65Warnings.ca.gov/>

## Nu conține Minerale de conflict

Acest produs nu conține substanțe desemnate drept „minerale de conflict” precum tantalul, staniul, aurul sau wolfram din Republica Democratică Congo sau din țările adiacente.