

## Positioneringsbussen • zonder kraag, DIN 179 A

EH 23112.



### Productbeschrijving

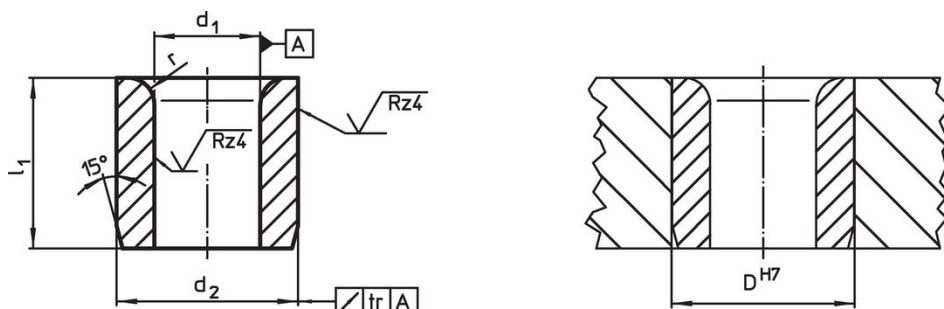
Positioneringsbussen worden gebruikt om repeterende gaten te boren in de zelfde locatie om de betrouwbaarheid te verzekeren.

De geharde en geslepen positioneringsbussen kunnen worden gebruikt als slijtvaste leidraad voor boren, schachten enz.

### Materiaal


- Inzetgehard staal, inzetgehard


### Tekening



### Bestelinformatie

d <sub>1</sub> F7	Afmetingen			Boring D H7 [mm]	[g]	Artikelnr.
	l <sub>1</sub> [mm]	d <sub>2</sub> n6	r			
2,0	6	5	1,0	5	0,7	<a href="#">23112.0520</a>
2,0	9	5	1,0	5	1,1	<a href="#">23112.0521</a>
2,1	6	5	1,0	5	0,7	<a href="#">23112.0522</a>
2,1	9	5	1,0	5	1,1	<a href="#">23112.0523</a>
2,5	6	5	1,0	5	0,7	<a href="#">23112.0524</a>
2,5	9	5	1,0	5	1,0	<a href="#">23112.0525</a>
3,0	8	6	1,0	6	1,9	<a href="#">23112.0530</a>
3,0	12	6	1,0	6	1,9	<a href="#">23112.0531</a>
3,0	16	6	1,0	6	2,6	<a href="#">23112.0532</a>
3,1	8	6	1,0	6	1,2	<a href="#">23112.0533</a>
3,1	12	6	1,0	6	1,9	<a href="#">23112.0534</a>
3,1	16	6	1,0	6	3,2	<a href="#">23112.0535</a>
3,5	8	7	1,0	7	2,4	<a href="#">23112.0536</a>
3,5	12	7	1,0	7	2,6	<a href="#">23112.0537</a>
3,5	16	7	1,0	7	3,6	<a href="#">23112.0538</a>
4,0	8	7	1,0	7	1,5	<a href="#">23112.0540</a>
4,0	12	7	1,0	7	3,0	<a href="#">23112.0541</a>
4,0	16	7	1,0	7	3,2	<a href="#">23112.0542</a>
4,1	8	8	1,0	8	2,2	<a href="#">23112.0543</a>
4,1	12	8	1,0	8	3,4	<a href="#">23112.0544</a>
4,1	16	8	1,0	8	4,6	<a href="#">23112.0545</a>
4,5	8	8	1,0	8	2,1	<a href="#">23112.0546</a>
4,5	12	8	1,0	8	3,1	<a href="#">23112.0547</a>
4,5	16	8	1,0	8	4,2	<a href="#">23112.0548</a>
5,0	8	8	1,0	8	1,8	<a href="#">23112.0550</a>
5,0	12	8	1,0	8	3,4	<a href="#">23112.0551</a>
5,0	16	8	1,0	8	3,7	<a href="#">23112.0552</a>
5,1	10	10	1,5	10	4,4	<a href="#">23112.0553</a>
5,1	16	10	1,5	10	7,1	<a href="#">23112.0554</a>
5,1	20	10	1,5	10	8,9	<a href="#">23112.0555</a>
5,5	10	10	1,5	10	4,1	<a href="#">23112.0556</a>

d <sub>1</sub> F7	Afmetingen			Boring D H7 [mm]	 [g]	Artikelnr.
	l <sub>1</sub> [mm]	d <sub>2</sub> n6	r			
5,5	16	10	1,5	10	6,7	<a href="#">23112.0557</a>
5,5	20	10	1,5	10	8,4	<a href="#">23112.0558</a>
6,0	10	10	1,5	10	3,8	<a href="#">23112.0560</a>
6,0	16	10	1,5	10	6,1	<a href="#">23112.0561</a>
6,0	20	10	1,5	10	7,7	<a href="#">23112.0562</a>
6,1	10	12	1,5	12	6,3	<a href="#">23112.0563</a>
6,1	16	12	1,5	12	10,0	<a href="#">23112.0564</a>
6,1	20	12	1,5	12	13,0	<a href="#">23112.0565</a>
6,5	10	12	1,5	12	6,0	<a href="#">23112.0566</a>
6,5	16	12	1,5	12	9,7	<a href="#">23112.0567</a>
6,5	20	12	1,5	12	12,0	<a href="#">23112.0568</a>
7,0	10	12	1,5	12	5,6	<a href="#">23112.0570</a>
7,0	16	12	1,5	12	9,1	<a href="#">23112.0571</a>
7,0	20	12	1,5	12	11,0	<a href="#">23112.0572</a>
7,1	10	12	1,5	12	5,5	<a href="#">23112.0573</a>
7,1	16	12	1,5	12	9,0	<a href="#">23112.0574</a>
7,1	20	12	1,5	12	11,0	<a href="#">23112.0575</a>
7,5	10	12	1,5	12	5,1	<a href="#">23112.0576</a>
7,5	16	12	1,5	12	8,4	<a href="#">23112.0577</a>
7,5	20	12	1,5	12	11,0	<a href="#">23112.0578</a>
8,0	10	12	1,5	12	4,7	<a href="#">23112.0580</a>
8,0	16	12	1,5	12	7,6	<a href="#">23112.0581</a>
8,0	20	12	1,5	12	9,6	<a href="#">23112.0582</a>
8,1	12	15	2,0	15	11,0	<a href="#">23112.0583</a>
8,1	20	15	2,0	15	19,0	<a href="#">23112.0584</a>
8,1	25	15	2,0	15	24,0	<a href="#">23112.0585</a>
8,5	12	15	2,0	15	11,0	<a href="#">23112.0586</a>
8,5	20	15	2,0	15	18,0	<a href="#">23112.0587</a>
8,5	25	15	2,0	15	23,0	<a href="#">23112.0588</a>
9,0	12	15	2,0	15	10,0	<a href="#">23112.0590</a>
9,0	20	15	2,0	15	17,0	<a href="#">23112.0591</a>
9,0	25	15	2,0	15	22,0	<a href="#">23112.0592</a>
9,1	12	15	2,0	15	10,0	<a href="#">23112.0593</a>
9,1	20	15	2,0	15	17,0	<a href="#">23112.0594</a>
9,1	25	15	2,0	15	21,0	<a href="#">23112.0595</a>
9,5	12	15	2,0	15	9,5	<a href="#">23112.0596</a>
9,5	20	15	2,0	15	16,0	<a href="#">23112.0597</a>
9,5	25	15	2,0	15	20,0	<a href="#">23112.0598</a>
10,0	12	15	2,0	15	8,8	<a href="#">23112.0600</a>
10,0	20	15	2,0	15	15,0	<a href="#">23112.0601</a>
10,0	25	15	2,0	15	19,0	<a href="#">23112.0602</a>
10,1	12	18	2,0	18	16,0	<a href="#">23112.0603</a>
10,1	20	18	2,0	18	27,0	<a href="#">23112.0604</a>
10,1	25	18	2,0	18	33,0	<a href="#">23112.0605</a>
10,5	12	18	2,0	18	15,0	<a href="#">23112.0606</a>
10,5	20	18	2,0	18	26,0	<a href="#">23112.0607</a>
10,5	25	18	2,0	18	32,0	<a href="#">23112.0608</a>
11,0	12	18	2,0	18	14,0	<a href="#">23112.0610</a>
11,0	20	18	2,0	18	24,0	<a href="#">23112.0611</a>
11,0	25	18	2,0	18	31,0	<a href="#">23112.0612</a>
11,1	12	18	2,0	18	14,0	<a href="#">23112.0613</a>
11,1	20	18	2,0	18	24,0	<a href="#">23112.0614</a>
11,1	25	18	2,0	18	30,0	<a href="#">23112.0615</a>
11,5	12	18	2,0	18	13,0	<a href="#">23112.0616</a>
11,5	20	18	2,0	18	23,0	<a href="#">23112.0617</a>
11,5	25	18	2,0	18	29,0	<a href="#">23112.0618</a>
12,0	12	18	2,0	18	13,0	<a href="#">23112.0620</a>
12,0	20	18	2,0	18	22,0	<a href="#">23112.0621</a>
12,0	25	18	2,0	18	27,0	<a href="#">23112.0622</a>
12,1	16	22	2,0	22	32,0	<a href="#">23112.0623</a>
12,1	28	22	2,0	22	57,0	<a href="#">23112.0624</a>

d <sub>1</sub> F7	Afmetingen			r	Boring D H7 [mm]	 [g]	Artikelnr.
	l <sub>1</sub> [mm]	d <sub>2</sub> n6					
12,1	36	22		2,0	22	74,0	<a href="#">23112.0625</a>
12,5	16	22		2,0	22	31,0	<a href="#">23112.0626</a>
12,5	28	22		2,0	22	66,0	<a href="#">23112.0627</a>
12,5	36	22		2,0	22	69,0	<a href="#">23112.0628</a>
13,0	16	22		2,0	22	30,0	<a href="#">23112.0630</a>
13,0	28	22		2,0	22	53,0	<a href="#">23112.0631</a>
13,0	36	22		2,0	22	69,0	<a href="#">23112.0632</a>
14,0	16	22		2,0	22	27,0	<a href="#">23112.0640</a>
14,0	28	22		2,0	22	49,0	<a href="#">23112.0641</a>
14,0	36	22		2,0	22	63,0	<a href="#">23112.0642</a>
15,0	16	22		2,0	22	24,0	<a href="#">23112.0650</a>
15,0	28	22		2,0	22	44,0	<a href="#">23112.0651</a>
15,0	36	22		2,0	22	56,0	<a href="#">23112.0652</a>
16,0	16	26		2,0	26	45,0	<a href="#">23112.0660</a>
16,0	28	26		2,0	26	71,0	<a href="#">23112.0661</a>
16,0	36	26		2,0	26	92,0	<a href="#">23112.0662</a>
16,1	16	26		2,0	26	40,0	<a href="#">23112.0663</a>
16,1	28	26		2,0	26	71,0	<a href="#">23112.0664</a>
16,1	36	26		2,0	26	91,0	<a href="#">23112.0665</a>
16,5	16	26		2,0	26	39,0	<a href="#">23112.0666</a>
16,5	28	26		2,0	26	68,0	<a href="#">23112.0667</a>
16,5	36	26		2,0	26	88,0	<a href="#">23112.0668</a>
17,0	16	26		2,0	26	37,0	<a href="#">23112.0671</a>
17,0	28	26		2,0	26	65,0	<a href="#">23112.0672</a>
17,0	36	26		2,0	26	84,0	<a href="#">23112.0673</a>
18,0	16	26		2,0	26	33,0	<a href="#">23112.0681</a>
18,0	28	26		2,0	26	59,0	<a href="#">23112.0682</a>
18,0	36	26		2,0	26	76,0	<a href="#">23112.0683</a>
19,0	20	30		3,0	30	64,0	<a href="#">23112.0691</a>
19,0	36	30		3,0	30	117,0	<a href="#">23112.0692</a>
19,0	45	30		3,0	30	147,0	<a href="#">23112.0693</a>
20,0	20	30		3,0	30	59,0	<a href="#">23112.0701</a>
20,0	36	30		3,0	30	108,0	<a href="#">23112.0702</a>
20,0	45	30		3,0	30	136,0	<a href="#">23112.0703</a>
20,1	20	30		3,0	30	59,0	<a href="#">23112.0704</a>
20,1	36	30		3,0	30	108,0	<a href="#">23112.0705</a>
20,1	45	30		3,0	30	135,0	<a href="#">23112.0706</a>
22,0	20	30		3,0	30	49,0	<a href="#">23112.0721</a>
22,0	36	30		3,0	30	90,0	<a href="#">23112.0722</a>
22,0	45	30		3,0	30	113,0	<a href="#">23112.0723</a>
25,0	20	35		3,0	35	71,0	<a href="#">23112.0751</a>
25,0	36	35		3,0	35	130,0	<a href="#">23112.0752</a>
25,0	45	35		3,0	35	163,0	<a href="#">23112.0753</a>
30,0	25	42		3,0	42	129,0	<a href="#">23112.0801</a>
30,0	45	42		3,0	42	235,0	<a href="#">23112.0802</a>
30,0	56	42		3,0	42	293,0	<a href="#">23112.0803</a>

## Voldoet

### Conform RoHS

Bevat lood - voldoet aan uitzonderingen 6a / 6b / 6c

### Bevat SVHC stoffen >0,1% w/w

Bevat lood - SVHC-lijst per 23.01.2024

### Bevat propositie 65 stoffen



Lood kan kanker en reproductieve schade veroorzaken door blootstelling  
<https://www.P65Warnings.ca.gov/>

### Vrij van conflictmineralen

Dit product bevat geen stoffen die worden aangeduid als "conflictmineralen" zoals tantaal, tin, goud of wolfram uit de Democratische Republiek Congo of aangrenzende landen."