

## 볼이 끝에 달린 스크류 · 머리 없음, 편평한 볼 EH 22720.



### 제품 설명

플라스틱 볼이 끝에 달린 스크류는 민감한 부품에 압력을 가할 경우 사용된다. 정확하게 평행하지 않은 표면을 클램프 하고, 조여주고, 지지해주는 데 사용. 움직이는 볼로 인하여 최대 하중을 전달.

### 재질

#### 볼

- 볼 베어링 스틸, 경화처리
- 스테인레스 스틸, 경화처리
- 열 가소성 수지(플라스틱) POM, 빨간색

#### 나사

- 열처리 스틸, 1200 ±100 N/mm<sup>2</sup>
- 스테인레스 스틸 1.4305

### 더 많은 정보

#### 참조

완전히 회전되는 볼.  
스페셜 타입 별도 요청.

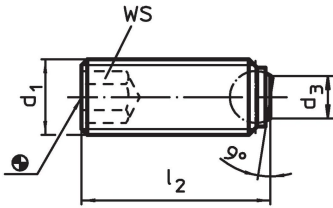
#### 참조

나사 풀림 방지는 별도 요청. 부록 - 기술 자료 - 참조.

#### 추가 제품

- 볼이 끝에 달린 스크류, 머리 없음, 회전되지 않는 볼
- 볼이 끝에 달린 스크류, 머리 없음, 정교한 나사
- 볼이 끝에 달린 스크류, 머리 없음, 짧은 형
- 볼이 끝에 달린 스크류, 머리 없음, 편평한 볼과 별도양 소켓



### 그림





### 주문 정보

d <sub>1</sub>	l <sub>2</sub>	치수		볼 직경	WS	정적 하중에 대한 부하 용량 <sup>1)</sup> 최대	최소		제품 번호	
		d <sub>3</sub>	[mm]				[mm]	최대		[g]
평면, 열처리 스틸										
M 4	5,6	1,8		2,5	2,0	3,5	-	250	0,3	22720.0542
M 4	7,6	1,8		2,5	2,0	3,5	-	250	0,4	22720.0543
M 4	9,6	1,8		2,5	2,0	3,5	-	250	0,6	22720.0544
M 4	11,6	1,8		2,5	2,0	3,5	-	250	0,7	22720.0545
M 4	15,6	1,8		2,5	2,0	3,5	-	250	1,0	22720.0546
M 5	7,5	2,2		3,0	2,5	4,5	-	250	0,6	22720.0552
M 5	9,5	2,2		3,0	2,5	4,5	-	250	0,9	22720.0553
M 5	11,5	2,2		3,0	2,5	4,5	-	250	1,1	22720.0554
M 5	15,5	2,2		3,0	2,5	4,5	-	250	1,6	22720.0555
M 5	19,5	2,2		3,0	2,5	4,5	-	250	2,0	22720.0556
M 5	24,5	2,2		3,0	2,5	4,5	-	250	2,6	22720.0558
M 6	10,0	3,2		4,0	3,0	9,0	-	250	1,3	22720.0562
M 6	12,0	3,2		4,0	3,0	9,0	-	250	1,6	22720.0563
M 6	16,0	3,2		4,0	3,0	9,0	-	250	2,3	22720.0564
M 6	20,0	3,2		4,0	3,0	9,0	-	250	3,0	22720.0565
M 6	25,0	3,2		4,0	3,0	9,0	-	250	3,8	22720.0566
M 8	10,0	4,5		5,5	4,0	15,0	-	250	2,4	22720.0581
M 8	12,0	4,5		5,5	4,0	15,0	-	250	2,8	22720.0582
M 8	16,0	4,5		5,5	4,0	15,0	-	250	4,1	22720.0583
M 8	20,0	4,5		5,5	4,0	15,0	-	250	5,1	22720.0584

<sup>1)</sup> 표기된 하중은 스테인레스 스틸 재질에 해당되지 않음 (플라스틱 볼 타입은 제외).

d <sub>1</sub>	치수		볼 직경	WS [mm]	정적 하중에 대한 부하 용량 <sup>1)</sup> 최대 [kN]	 최소      최대 [°C]		 [g]	제품 번호.	
	l <sub>2</sub>	d <sub>3</sub> [mm]				최소	최대			
M 8	25,0	4,5	5,5	4,0	15,0	-	250	6,7	22720.0585	
M 8	30,0	4,5	5,5	4,0	15,0	-	250	8,2	22720.0586	
M10	12,0	6,0	7,0	5,0	20,0	-	250	4,5	22720.0601	
M10	16,0	6,0	7,0	5,0	20,0	-	250	5,9	22720.0602	
M10	20,0	6,0	7,0	5,0	20,0	-	250	7,8	22720.0603	
M10	25,0	6,0	7,0	5,0	20,0	-	250	10,0	22720.0604	
M10	30,0	6,0	7,0	5,0	20,0	-	250	13,0	22720.0605	
M10	35,0	6,0	7,0	5,0	20,0	-	250	15,0	22720.0606	
M10	40,0	6,0	7,0	5,0	20,0	-	250	18,0	22720.0608	
M12	16,0	7,2	8,5	6,0	30,0	-	250	8,8	22720.0621	
M12	20,0	7,2	8,5	6,0	30,0	-	250	11,0	22720.0622	
M12	25,0	7,2	8,5	6,0	30,0	-	250	14,0	22720.0623	
M12	30,0	7,2	8,5	6,0	30,0	-	250	18,0	22720.0624	
M12	40,0	7,2	8,5	6,0	30,0	-	250	25,0	22720.0626	
M12	50,0	7,2	8,5	6,0	30,0	-	250	32,0	22720.0628	
M16	20,0	10,7	12,0	8,0	60,0	-	250	21,0	22720.0661	
M16	25,0	10,7	12,0	8,0	60,0	-	250	26,0	22720.0662	
M16	35,0	10,7	12,0	8,0	60,0	-	250	40,0	22720.0664	
M16	50,0	10,7	12,0	8,0	60,0	-	250	60,0	22720.0666	
M20	30,0	13,5	15,0	10,0	90,0	-	250	50,0	22720.0702	
M20	40,0	13,5	15,0	10,0	90,0	-	250	71,0	22720.0704	
M20	50,0	13,5	15,0	10,0	90,0	-	250	92,0	22720.0705	
M20	60,0	13,5	15,0	10,0	90,0	-	250	111,0	22720.0706	
M24	35,0	15,8	18,0	12,0	120,0	-	250	85,0	22720.0742	
M24	50,0	15,8	18,0	12,0	120,0	-	250	129,0	22720.0744	
M24	80,0	15,8	18,0	12,0	120,0	-	250	218,0	22720.0746	
평면, 스테인리스 스틸										
M 4	5,6	1,8	2,5	2,0	3,5	-	250	0,3	22720.0827	
M 4	7,6	1,8	2,5	2,0	3,5	-	250	0,4	22720.0828	
M 4	9,6	1,8	2,5	2,0	3,5	-	250	0,6	22720.0829	
M 4	11,6	1,8	2,5	2,0	3,5	-	250	0,7	22720.0830	
M 4	15,6	1,8	2,5	2,0	3,5	-	250	1,0	22720.0832	
M 5	7,5	2,2	3,0	2,5	4,5	-	250	0,6	22720.0833	
M 5	9,5	2,2	3,0	2,5	4,5	-	250	0,9	22720.0834	
M 5	11,5	2,2	3,0	2,5	4,5	-	250	1,1	22720.0835	
M 5	15,5	2,2	3,0	2,5	4,5	-	250	1,6	22720.0836	
M 5	19,5	2,2	3,0	2,5	4,5	-	250	2,0	22720.0837	
M 5	24,5	2,2	3,0	2,5	4,5	-	250	2,6	22720.0838	
M 6	10,0	3,2	4,0	3,0	9,0	-	250	1,3	22720.0840	
M 6	12,0	3,2	4,0	3,0	9,0	-	250	1,6	22720.0842	
M 6	16,0	3,2	4,0	3,0	9,0	-	250	2,3	22720.0844	
M 6	20,0	3,2	4,0	3,0	9,0	-	250	3,0	22720.0845	
M 6	25,0	3,2	4,0	3,0	9,0	-	250	3,8	22720.0846	
M 8	10,0	4,5	5,5	4,0	15,0	-	250	2,4	22720.0850	
M 8	12,0	4,5	5,5	4,0	15,0	-	250	2,8	22720.0852	
M 8	16,0	4,5	5,5	4,0	15,0	-	250	4,1	22720.0853	
M 8	20,0	4,5	5,5	4,0	15,0	-	250	5,1	22720.0854	
M 8	25,0	4,5	5,5	4,0	15,0	-	250	6,7	22720.0855	
M 8	30,0	4,5	5,5	4,0	15,0	-	250	8,2	22720.0856	
M10	12,0	6,0	7,0	5,0	20,0	-	250	4,5	22720.0860	
M10	16,0	6,0	7,0	5,0	20,0	-	250	5,9	22720.0862	
M10	20,0	6,0	7,0	5,0	20,0	-	250	7,8	22720.0863	
M10	25,0	6,0	7,0	5,0	20,0	-	250	10,0	22720.0864	
M10	30,0	6,0	7,0	5,0	20,0	-	250	13,0	22720.0865	
M10	35,0	6,0	7,0	5,0	20,0	-	250	15,0	22720.0866	
M10	40,0	6,0	7,0	5,0	20,0	-	250	18,0	22720.0868	
M12	16,0	7,2	8,5	6,0	30,0	-	250	8,8	22720.0870	
M12	20,0	7,2	8,5	6,0	30,0	-	250	11,0	22720.0872	
M12	25,0	7,2	8,5	6,0	30,0	-	250	14,0	22720.0873	
M12	30,0	7,2	8,5	6,0	30,0	-	250	18,0	22720.0874	

<sup>1)</sup> 표기된 하중은 스테인리스 스틸 재질에 해당되지 않음 (플라스틱 볼 타입은 제외).

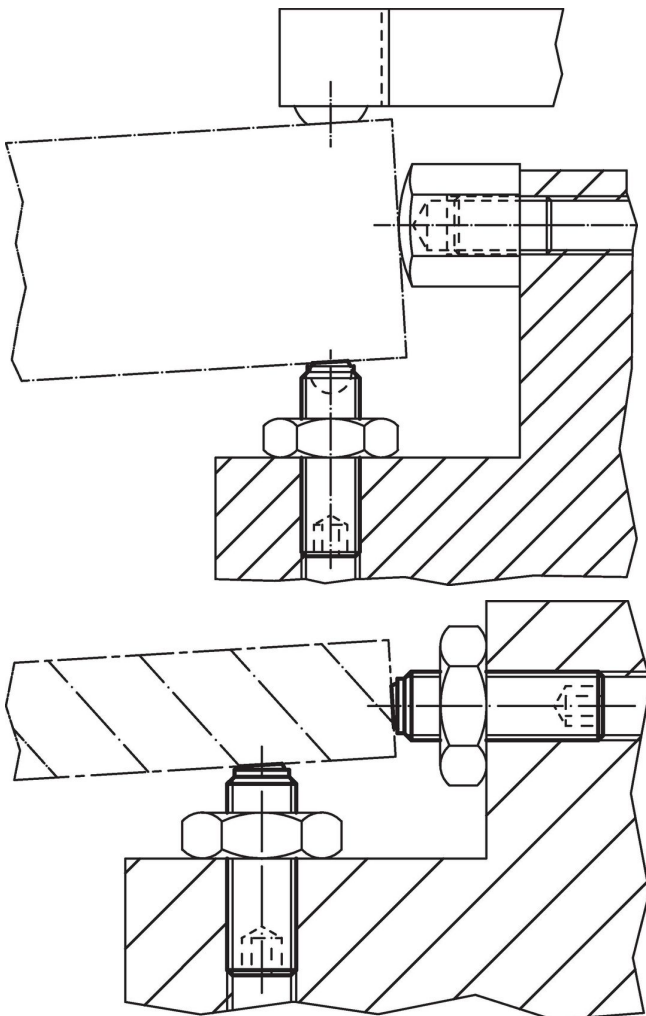
d <sub>1</sub>	치수		볼 직경	WS [mm]	정적 하중에 대한 부하 용량 <sup>1)</sup> 최대 [kN]	 최소      최대 [°C]		 [g]	제품 번호.	
	l <sub>2</sub>	d <sub>3</sub> [mm]								
M12	40,0	7,2	8,5	6,0	30,0	-	250	25,0	22720.0876	
M12	50,0	7,2	8,5	6,0	30,0	-	250	32,0	22720.0878	
M16	20,0	10,7	12,0	8,0	60,0	-	250	21,0	22720.0880	
M16	25,0	10,7	12,0	8,0	60,0	-	250	26,0	22720.0882	
M16	35,0	10,7	12,0	8,0	60,0	-	250	40,0	22720.0884	
M16	50,0	10,7	12,0	8,0	60,0	-	250	60,0	22720.0886	
평평한 면을 가진 볼 열 가소성 수지, 평면 (비틀림 방지), 열처리 스틸										
M 4	5,9	1,8	2,5	2,0	0,3	-30	80	0,4	22720.0452	
M 4	7,9	1,8	2,5	2,0	0,3	-30	80	0,3	22720.0453	
M 4	9,9	1,8	2,5	2,0	0,3	-30	80	0,5	22720.0454	
M 4	11,9	1,8	2,5	2,0	0,3	-30	80	0,7	22720.0455	
M 4	15,9	1,8	2,5	2,0	0,3	-30	80	0,9	22720.0456	
M 5	7,8	2,1	3,0	2,5	0,5	-30	80	0,6	22720.0462	
M 5	9,8	2,1	3,0	2,5	0,5	-30	80	0,8	22720.0463	
M 5	11,8	2,1	3,0	2,5	0,5	-30	80	1,0	22720.0464	
M 5	15,8	2,1	3,0	2,5	0,5	-30	80	1,5	22720.0465	
M 5	19,8	2,1	3,0	2,5	0,5	-30	80	1,9	22720.0466	
M 5	24,8	2,1	3,0	2,5	0,5	-30	80	2,5	22720.0467	
M 6	10,3	3,0	4,0	3,0	0,9	-30	80	1,1	22720.0472	
M 6	12,3	3,0	4,0	3,0	0,9	-30	80	1,4	22720.0473	
M 6	16,3	3,0	4,0	3,0	0,9	-30	80	2,1	22720.0474	
M 6	20,3	3,0	4,0	3,0	0,9	-30	80	2,8	22720.0475	
M 6	25,3	3,0	4,0	3,0	0,9	-30	80	3,6	22720.0476	
M 8	10,4	4,2	5,5	4,0	1,5	-30	80	1,9	22720.0482	
M 8	12,4	4,2	5,5	4,0	1,5	-30	80	2,3	22720.0483	
M 8	16,4	4,2	5,5	4,0	1,5	-30	80	3,4	22720.0484	
M 8	20,4	4,2	5,5	4,0	1,5	-30	80	4,6	22720.0485	
M 8	25,4	4,2	5,5	4,0	1,5	-30	80	6,2	22720.0486	
M 8	30,4	4,2	5,5	4,0	1,5	-30	80	7,8	22720.0487	
평평한 면을 가진 볼 열 가소성 수지, 평면 (비틀림 방지), 스테인리스 스틸										
M 4	5,9	1,8	2,5	2,0	0,3	-30	80	0,4	22720.0492	
M 4	7,9	1,8	2,5	2,0	0,3	-30	80	0,3	22720.0493	
M 4	9,9	1,8	2,5	2,0	0,3	-30	80	0,5	22720.0494	
M 4	11,9	1,8	2,5	2,0	0,3	-30	80	0,7	22720.0495	
M 4	15,9	1,8	2,5	2,0	0,3	-30	80	0,9	22720.0496	
M 5	7,8	2,1	3,0	2,5	0,5	-30	80	0,6	22720.0502	
M 5	9,8	2,1	3,0	2,5	0,5	-30	80	0,8	22720.0503	
M 5	11,8	2,1	3,0	2,5	0,5	-30	80	1,0	22720.0504	
M 5	15,8	2,1	3,0	2,5	0,5	-30	80	1,5	22720.0505	
M 5	19,8	2,1	3,0	2,5	0,5	-30	80	1,9	22720.0506	
M 5	24,8	2,1	3,0	2,5	0,5	-30	80	2,5	22720.0507	
M 6	10,3	3,0	4,0	3,0	0,9	-30	80	1,1	22720.0512	
M 6	12,3	3,0	4,0	3,0	0,9	-30	80	1,4	22720.0513	
M 6	16,3	3,0	4,0	3,0	0,9	-30	80	2,1	22720.0514	
M 6	20,3	3,0	4,0	3,0	0,9	-30	80	2,8	22720.0515	
M 6	25,3	3,0	4,0	3,0	0,9	-30	80	3,6	22720.0516	
M 8	10,4	4,2	5,5	4,0	1,5	-30	80	1,9	22720.0522	
M 8	12,4	4,2	5,5	4,0	1,5	-30	80	2,3	22720.0523	
M 8	16,4	4,2	5,5	4,0	1,5	-30	80	3,4	22720.0524	
M 8	20,4	4,2	5,5	4,0	1,5	-30	80	4,6	22720.0525	
M 8	25,4	4,2	5,5	4,0	1,5	-30	80	6,2	22720.0526	
M 8	30,4	4,2	5,5	4,0	1,5	-30	80	7,8	22720.0527	
널링된 표면, 열처리 스틸										
M 8	10,0	4,5	5,5	4,0	15,0	-	250	2,4	22720.0891	
M 8	12,0	4,5	5,5	4,0	15,0	-	250	2,7	22720.0892	
M 8	16,0	4,5	5,5	4,0	15,0	-	250	3,9	22720.0893	
M 8	20,0	4,5	5,5	4,0	15,0	-	250	5,1	22720.0894	
M 8	25,0	4,5	5,5	4,0	15,0	-	250	6,7	22720.0895	
M 8	30,0	4,5	5,5	4,0	15,0	-	250	8,2	22720.0896	
M10	12,0	6,0	7,0	5,0	20,0	-	250	4,5	22720.0901	

<sup>1)</sup> 표기된 하중은 스텐레스 스틸 재질에 해당되지 않음 (플라스틱 볼 타입은 제외).

d <sub>1</sub>	치수		볼 직경	WS [mm]	정적 하중에 대 한 부하 용량 <sup>1)</sup> 최대 [kN]	 최소      최대 [°C]		 [g]	제품 번호
	l <sub>2</sub>	d <sub>3</sub> [mm]							
M10	16,0	6,0	7,0	5,0	20,0	-	250	5,8	22720.0902
M10	20,0	6,0	7,0	5,0	20,0	-	250	7,7	22720.0903
M10	25,0	6,0	7,0	5,0	20,0	-	250	10,0	22720.0904
M10	30,0	6,0	7,0	5,0	20,0	-	250	13,0	22720.0905
M10	35,0	6,0	7,0	5,0	20,0	-	250	15,0	22720.0906
M10	40,0	6,0	7,0	5,0	20,0	-	250	17,0	22720.0908
M12	16,0	7,2	8,5	6,0	30,0	-	250	8,8	22720.0921
M12	20,0	7,2	8,5	6,0	30,0	-	250	10,0	22720.0922
M12	25,0	7,2	8,5	6,0	30,0	-	250	14,0	22720.0923
M12	30,0	7,2	8,5	6,0	30,0	-	250	18,0	22720.0924
M12	40,0	7,2	8,5	6,0	30,0	-	250	25,0	22720.0926
M12	50,0	7,2	8,5	6,0	30,0	-	250	32,0	22720.0928
M16	20,0	10,7	12,0	8,0	60,0	-	250	21,0	22720.0961
M16	25,0	10,7	12,0	8,0	60,0	-	250	26,0	22720.0962
M16	35,0	10,7	12,0	8,0	60,0	-	250	40,0	22720.0964
M16	50,0	10,7	12,0	8,0	60,0	-	250	60,0	22720.0966
M20	30,0	13,5	15,0	10,0	90,0	-	250	49,0	22720.0972
M20	40,0	13,5	15,0	10,0	90,0	-	250	70,0	22720.0974
M20	50,0	13,5	15,0	10,0	90,0	-	250	91,0	22720.0975
M20	60,0	13,5	15,0	10,0	90,0	-	250	111,0	22720.0976
M24	35,0	15,8	18,0	12,0	120,0	-	250	84,0	22720.0982
M24	50,0	15,8	18,0	12,0	120,0	-	250	125,0	22720.0984
M24	80,0	15,8	18,0	12,0	120,0	-	250	217,0	22720.0986

<sup>1)</sup> 표기된 하중은 스테인레스 스틸 재질에 해당되지 않음 (플라스틱 볼 타입은 제외).

#### 적용 예



## 규정 준수

자세한 규정 준수 정보를 보려면 원하는 품목 번호를 선택하십시오.