

## Boccole di posizionamento • liscie, DIN 179 A EH 23112.



### Descrizione prodotto

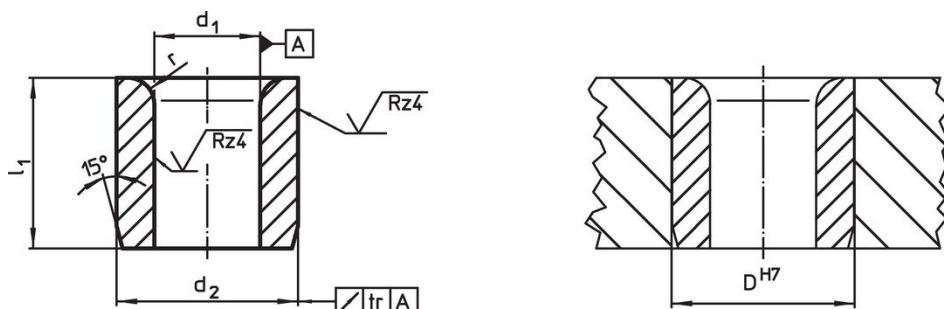
Boccole di posizionamento per operazioni ripetitive di foratura o per garantire il posizionamento e la ripetitività in produzioni di serie.

Le bussole, temprate e rettificate, possono essere utilizzate come guida per le operazioni di foratura, scorrimento alberi, ecc.

### Materiale


- Acciaio bonificato e temprato


### Disegno



### Caratteristiche

Dimensioni				Foro di ricezione		g	Codice
d <sub>1</sub> F7	l <sub>1</sub> [mm]	d <sub>2</sub> n6	r	D H7 [mm]			
2,0	6	5	1,0	5	0,7	23112.0520	
2,0	9	5	1,0	5	1,1	23112.0521	
2,1	6	5	1,0	5	0,7	23112.0522	
2,1	9	5	1,0	5	1,1	23112.0523	
2,5	6	5	1,0	5	0,7	23112.0524	
2,5	9	5	1,0	5	1,0	23112.0525	
3,0	8	6	1,0	6	1,9	23112.0530	
3,0	12	6	1,0	6	1,9	23112.0531	
3,0	16	6	1,0	6	2,6	23112.0532	
3,1	8	6	1,0	6	1,2	23112.0533	
3,1	12	6	1,0	6	1,9	23112.0534	
3,1	16	6	1,0	6	3,2	23112.0535	
3,5	8	7	1,0	7	2,4	23112.0536	
3,5	12	7	1,0	7	2,6	23112.0537	
3,5	16	7	1,0	7	3,6	23112.0538	
4,0	8	7	1,0	7	1,5	23112.0540	
4,0	12	7	1,0	7	3,0	23112.0541	
4,0	16	7	1,0	7	3,2	23112.0542	
4,1	8	8	1,0	8	2,2	23112.0543	
4,1	12	8	1,0	8	3,4	23112.0544	
4,1	16	8	1,0	8	4,6	23112.0545	
4,5	8	8	1,0	8	2,1	23112.0546	
4,5	12	8	1,0	8	3,1	23112.0547	
4,5	16	8	1,0	8	4,2	23112.0548	
5,0	8	8	1,0	8	1,8	23112.0550	
5,0	12	8	1,0	8	3,4	23112.0551	
5,0	16	8	1,0	8	3,7	23112.0552	
5,1	10	10	1,5	10	4,4	23112.0553	
5,1	16	10	1,5	10	7,1	23112.0554	
5,1	20	10	1,5	10	8,9	23112.0555	
5,5	10	10	1,5	10	4,1	23112.0556	

d <sub>1</sub> F7	Dimensioni			r	Foro di ricezione D H7 [mm]	 [g]	Codice
	l <sub>1</sub> [mm]	d <sub>2</sub> n6					
5,5	16	10		1,5	10	6,7	23112.0557
5,5	20	10		1,5	10	8,4	23112.0558
6,0	10	10		1,5	10	3,8	23112.0560
6,0	16	10		1,5	10	6,1	23112.0561
6,0	20	10		1,5	10	7,7	23112.0562
6,1	10	12		1,5	12	6,3	23112.0563
6,1	16	12		1,5	12	10,0	23112.0564
6,1	20	12		1,5	12	13,0	23112.0565
6,5	10	12		1,5	12	6,0	23112.0566
6,5	16	12		1,5	12	9,7	23112.0567
6,5	20	12		1,5	12	12,0	23112.0568
7,0	10	12		1,5	12	5,6	23112.0570
7,0	16	12		1,5	12	9,1	23112.0571
7,0	20	12		1,5	12	11,0	23112.0572
7,1	10	12		1,5	12	5,5	23112.0573
7,1	16	12		1,5	12	9,0	23112.0574
7,1	20	12		1,5	12	11,0	23112.0575
7,5	10	12		1,5	12	5,1	23112.0576
7,5	16	12		1,5	12	8,4	23112.0577
7,5	20	12		1,5	12	11,0	23112.0578
8,0	10	12		1,5	12	4,7	23112.0580
8,0	16	12		1,5	12	7,6	23112.0581
8,0	20	12		1,5	12	9,6	23112.0582
8,1	12	15		2,0	15	11,0	23112.0583
8,1	20	15		2,0	15	19,0	23112.0584
8,1	25	15		2,0	15	24,0	23112.0585
8,5	12	15		2,0	15	11,0	23112.0586
8,5	20	15		2,0	15	18,0	23112.0587
8,5	25	15		2,0	15	23,0	23112.0588
9,0	12	15		2,0	15	10,0	23112.0590
9,0	20	15		2,0	15	17,0	23112.0591
9,0	25	15		2,0	15	22,0	23112.0592
9,1	12	15		2,0	15	10,0	23112.0593
9,1	20	15		2,0	15	17,0	23112.0594
9,1	25	15		2,0	15	21,0	23112.0595
9,5	12	15		2,0	15	9,5	23112.0596
9,5	20	15		2,0	15	16,0	23112.0597
9,5	25	15		2,0	15	20,0	23112.0598
10,0	12	15		2,0	15	8,8	23112.0600
10,0	20	15		2,0	15	15,0	23112.0601
10,0	25	15		2,0	15	19,0	23112.0602
10,1	12	18		2,0	18	16,0	23112.0603
10,1	20	18		2,0	18	27,0	23112.0604
10,1	25	18		2,0	18	33,0	23112.0605
10,5	12	18		2,0	18	15,0	23112.0606
10,5	20	18		2,0	18	26,0	23112.0607
10,5	25	18		2,0	18	32,0	23112.0608
11,0	12	18		2,0	18	14,0	23112.0610
11,0	20	18		2,0	18	24,0	23112.0611
11,0	25	18		2,0	18	31,0	23112.0612
11,1	12	18		2,0	18	14,0	23112.0613
11,1	20	18		2,0	18	24,0	23112.0614
11,1	25	18		2,0	18	30,0	23112.0615
11,5	12	18		2,0	18	13,0	23112.0616
11,5	20	18		2,0	18	23,0	23112.0617
11,5	25	18		2,0	18	29,0	23112.0618
12,0	12	18		2,0	18	13,0	23112.0620
12,0	20	18		2,0	18	22,0	23112.0621
12,0	25	18		2,0	18	27,0	23112.0622
12,1	16	22		2,0	22	32,0	23112.0623
12,1	28	22		2,0	22	57,0	23112.0624

d <sub>1</sub> F7	Dimensioni			r	Foro di ricezione D H7 [mm]	 [g]	Codice
	l <sub>1</sub> [mm]	d <sub>2</sub> n6					
12,1	36	22		2,0	22	74,0	<a href="#">23112.0625</a>
12,5	16	22		2,0	22	31,0	<a href="#">23112.0626</a>
12,5	28	22		2,0	22	66,0	<a href="#">23112.0627</a>
12,5	36	22		2,0	22	69,0	<a href="#">23112.0628</a>
13,0	16	22		2,0	22	30,0	<a href="#">23112.0630</a>
13,0	28	22		2,0	22	53,0	<a href="#">23112.0631</a>
13,0	36	22		2,0	22	69,0	<a href="#">23112.0632</a>
14,0	16	22		2,0	22	27,0	<a href="#">23112.0640</a>
14,0	28	22		2,0	22	49,0	<a href="#">23112.0641</a>
14,0	36	22		2,0	22	63,0	<a href="#">23112.0642</a>
15,0	16	22		2,0	22	24,0	<a href="#">23112.0650</a>
15,0	28	22		2,0	22	44,0	<a href="#">23112.0651</a>
15,0	36	22		2,0	22	56,0	<a href="#">23112.0652</a>
16,0	16	26		2,0	26	45,0	<a href="#">23112.0660</a>
16,0	28	26		2,0	26	71,0	<a href="#">23112.0661</a>
16,0	36	26		2,0	26	92,0	<a href="#">23112.0662</a>
16,1	16	26		2,0	26	40,0	<a href="#">23112.0663</a>
16,1	28	26		2,0	26	71,0	<a href="#">23112.0664</a>
16,1	36	26		2,0	26	91,0	<a href="#">23112.0665</a>
16,5	16	26		2,0	26	39,0	<a href="#">23112.0666</a>
16,5	28	26		2,0	26	68,0	<a href="#">23112.0667</a>
16,5	36	26		2,0	26	88,0	<a href="#">23112.0668</a>
17,0	16	26		2,0	26	37,0	<a href="#">23112.0671</a>
17,0	28	26		2,0	26	65,0	<a href="#">23112.0672</a>
17,0	36	26		2,0	26	84,0	<a href="#">23112.0673</a>
18,0	16	26		2,0	26	33,0	<a href="#">23112.0681</a>
18,0	28	26		2,0	26	59,0	<a href="#">23112.0682</a>
18,0	36	26		2,0	26	76,0	<a href="#">23112.0683</a>
19,0	20	30		3,0	30	64,0	<a href="#">23112.0691</a>
19,0	36	30		3,0	30	117,0	<a href="#">23112.0692</a>
19,0	45	30		3,0	30	147,0	<a href="#">23112.0693</a>
20,0	20	30		3,0	30	59,0	<a href="#">23112.0701</a>
20,0	36	30		3,0	30	108,0	<a href="#">23112.0702</a>
20,0	45	30		3,0	30	136,0	<a href="#">23112.0703</a>
20,1	20	30		3,0	30	59,0	<a href="#">23112.0704</a>
20,1	36	30		3,0	30	108,0	<a href="#">23112.0705</a>
20,1	45	30		3,0	30	135,0	<a href="#">23112.0706</a>
22,0	20	30		3,0	30	49,0	<a href="#">23112.0721</a>
22,0	36	30		3,0	30	90,0	<a href="#">23112.0722</a>
22,0	45	30		3,0	30	113,0	<a href="#">23112.0723</a>
25,0	20	35		3,0	35	71,0	<a href="#">23112.0751</a>
25,0	36	35		3,0	35	130,0	<a href="#">23112.0752</a>
25,0	45	35		3,0	35	163,0	<a href="#">23112.0753</a>
30,0	25	42		3,0	42	129,0	<a href="#">23112.0801</a>
30,0	45	42		3,0	42	235,0	<a href="#">23112.0802</a>
30,0	56	42		3,0	42	293,0	<a href="#">23112.0803</a>

## Conformità

### Conforme alla normativa RoHS

Contiene piombo - conforme alle eccezioni 6a / 6b / 6c.

### Contiene sostanze SVHC >0,1% p/p

Contiene piombo - elenco SVHC [REACH] aggiornato al 27.06.2024.

### Contiene sostanze della Proposition 65



L'esposizione al piombo può causare cancro e danni riproduttivi  
<https://www.P65Warnings.ca.gov/>

### Privo di minerali di conflitto

Questo prodotto non contiene sostanze designate come "minerali da conflitto" come tantalio, stagno, oro o tungsteno della Repubblica Democratica del Congo o dei paesi limitrofi.