

Dadi per cave a T • DIN 508 EH 23010.



Descrizione prodotto

Questi dadi per scanalature a T sono realizzati secondo DIN 508. La gamma è ampliata da altre dimensioni che non sono incluse nella DIN.

Materiale

- Acciaio bonificato, qualità 8, lucido
- Acciaio bonificato, temperato e brunito, qualità 10
- Acciaio inox 1.4301

Assemblaggio

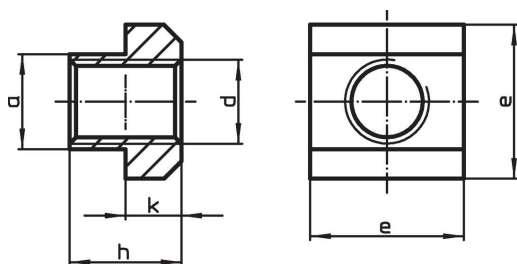
La forza indicata dei dadi a T si applica solamente se la vite viene avvitata per tutta la lunghezza del filetto presente nel dado stesso.

Maggiori informazioni

Note

Esecuzioni speciali a richiesta.


Disegno




Caratteristiche

Dimen- sione cava [mm]	d	Dimensioni				Per cave a T DIN 650 [mm]	Forza di prova per DIN 508 F min. [kN]	[g]	Codice
		a	e	h	k				
Acciaio bonificato, qualità 8, lucido									
5	M 4	4,6	9	6,5	3	5	7,0	2,4	23010.0051
6	M 5	5,6	10	8,0	4	6	11,4	3,4	23010.0061
8	M 6	7,6	13	10,0	6	8	16,0	8,3	23010.0081
10	M 6	9,6	15	12,0	6	10	16,0	14,0	23010.0103¹⁾
10	M 8	9,6	15	12,0	6	10	29,0	12,0	23010.0101
12	M 8	11,6	18	14,0	7	12	29,0	23,0	23010.0123¹⁾
12	M10	11,6	18	14,0	7	12	46,0	20,0	23010.0121
14	M10	13,6	22	16,0	8	14	46,0	38,0	23010.0143¹⁾
14	M12	13,6	22	16,0	8	14	67,0	34,0	23010.0141
16	M12	15,6	25	18,0	9	16	67,0	55,0	23010.0163¹⁾
16	M14	15,6	25	18,0	9	16	–	49,0	23010.0161¹⁾
18	M14	17,6	28	20,0	10	18	–	74,0	23010.0183¹⁾
18	M16	17,6	28	20,0	10	18	128,0	68,0	23010.0181
20	M16	19,6	32	24,0	12	20	128,0	116,0	23010.0203¹⁾
20	M18	19,6	32	24,0	12	20	–	107,0	23010.0201¹⁾
22	M18	21,6	35	28,0	14	22	–	162,0	23010.0223¹⁾
22	M20	21,6	35	28,0	14	22	196,0	149,0	23010.0221
24	M20	23,6	40	32,0	16	24	196,0	236,0	23010.0243¹⁾
24	M22	23,6	40	32,0	16	24	–	221,0	23010.0241¹⁾
28	M24	27,6	44	36,0	18	28	282,0	317,0	23010.0281

¹⁾ Dimensioni non previste dalla norma DIN.

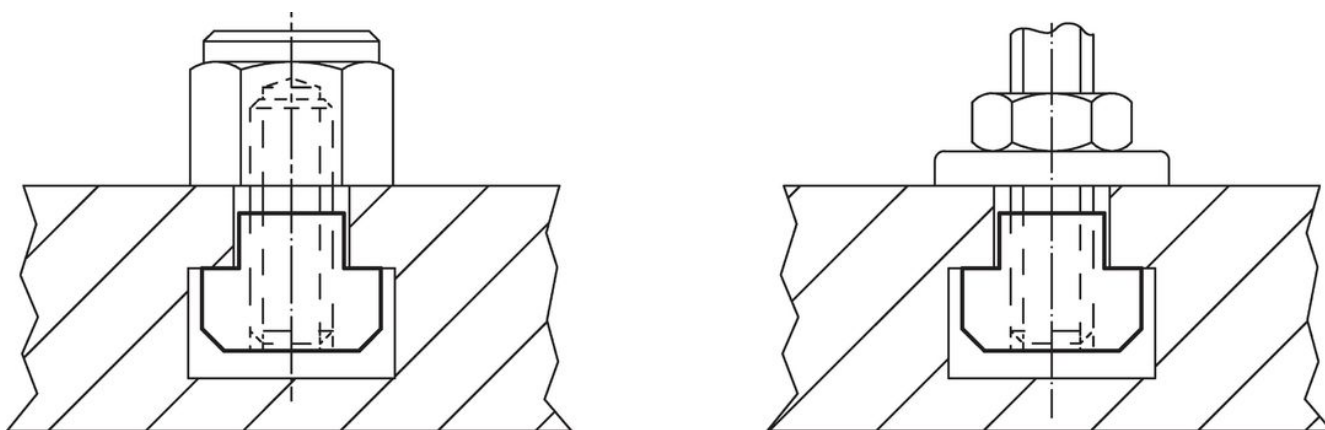
Dimen- sione cava [mm]	d	Dimensioni				Per cave a T DIN 650 [mm]	Forza di prova per DIN 508 F min. [kN]	 [g]	Codice
		a	e	h	k				
36	M30	35,5	54	44,0	22	36	448,0	585,0	23010.0361
42	M36	41,5	65	52,0	26	42	653,0	1000,0	23010.0421
48	M42	47,5	75	60,0	30	48	653,0	1500,0	23010.0481
54	M48	53,4	85	70,0	34	54	653,0	2264,0	23010.0541
Acciaio bonificato, temperato e brunito, qualità 10									
5	M 4	4,6	9	6,5	3	5	7,0	2,4	23010.0052
6	M 5	5,6	10	8,0	4	6	11,4	3,4	23010.0062
8	M 6	7,6	13	10,0	6	8	16,0	8,3	23010.0082
10	M 6	9,6	15	12,0	6	10	16,0	14,0	23010.0104 ¹⁾
10	M 8	9,6	15	12,0	6	10	29,0	12,0	23010.0102
12	M 8	11,6	18	14,0	7	12	29,0	23,0	23010.0124 ¹⁾
12	M10	11,6	18	14,0	7	12	46,0	20,0	23010.0122
14	M 6	13,6	22	16,0	8	14	16,0	43,0	23010.0146 ¹⁾
14	M 8	13,6	22	16,0	8	14	29,0	41,0	23010.0145 ¹⁾
14	M10	13,6	22	16,0	8	14	46,0	38,0	23010.0144 ¹⁾
14	M12	13,6	22	16,0	8	14	67,0	34,0	23010.0142
16	M 8	15,6	25	18,0	9	16	29,0	62,0	23010.0166 ¹⁾
16	M10	15,6	25	18,0	9	16	46,0	58,0	23010.0165 ¹⁾
16	M12	15,6	25	18,0	9	16	67,0	55,0	23010.0164 ¹⁾
16	M14	15,6	25	18,0	9	16	-	49,0	23010.0162 ¹⁾
18	M 8	17,6	28	20,0	10	18	29,0	89,0	23010.0187 ¹⁾
18	M10	17,6	28	20,0	10	18	46,0	85,0	23010.0186 ¹⁾
18	M12	17,6	28	20,0	10	18	67,0	98,0	23010.0185 ¹⁾
18	M14	17,6	28	20,0	10	18	-	74,0	23010.0184 ¹⁾
18	M16	17,6	28	20,0	10	18	128,0	68,0	23010.0182
20	M12	19,6	32	24,0	12	20	67,0	131,0	23010.0205 ¹⁾
20	M16	19,6	32	24,0	12	20	128,0	116,0	23010.0204 ¹⁾
20	M18	19,6	32	24,0	12	20	-	107,0	23010.0202 ¹⁾
22	M12	21,6	35	28,0	14	22	67,0	189,0	23010.0225 ¹⁾
22	M16	21,6	35	28,0	14	22	128,0	172,0	23010.0226 ¹⁾
22	M18	21,6	35	28,0	14	22	-	162,0	23010.0224 ¹⁾
22	M20	21,6	35	28,0	14	22	196,0	149,0	23010.0222
24	M16	23,6	40	32,0	16	24	128,0	262,0	23010.0246 ¹⁾
24	M20	23,6	40	32,0	16	24	196,0	236,0	23010.0244 ¹⁾
24	M22	23,6	40	32,0	16	24	-	221,0	23010.0242 ¹⁾
28	M16	27,6	44	36,0	18	28	128,0	375,0	23010.0286 ¹⁾
28	M20	27,6	44	36,0	18	28	196,0	349,0	23010.0284 ¹⁾
28	M22	27,6	44	36,0	18	28	-	332,0	23010.0283 ¹⁾
28	M24	27,6	44	36,0	18	28	282,0	317,0	23010.0282
32	M27	31,5	50	40,0	20	32	-	460,0	23010.0322 ¹⁾
36	M24	35,5	54	44,0	22	36	282,0	663,0	23010.0364 ¹⁾
36	M30	35,5	54	44,0	22	36	448,0	585,0	23010.0362
42	M36	41,5	65	52,0	26	42	653,0	1000,0	23010.0422
48	M42	47,5	75	60,0	30	48	653,0	1500,0	23010.0482
54	M48	53,4	85	70,0	34	54	653,0	2264,0	23010.0542

¹⁾ Dimensioni non previste dalla norma DIN.

Dimen- sione cava [mm]	d	Dimensioni				k	Per cave a T DIN 650 [mm]	Forza di prova per DIN 508 F min. [kN]	 [g]	Codice
		a	e	h	[mm]					
Acciaio inox 1.4301										
8	M 6	7,6	13	10,0	6	8	16,0	8,3	23010.0721	
10	M 8	9,6	15	12,0	6	10	29,0	12,0	23010.0731	
12	M10	11,6	18	14,0	7	12	46,0	20,0	23010.0741	
14	M12	13,6	22	16,0	8	14	67,0	34,0	23010.0751	
16	M14	15,6	25	18,0	9	16	–	49,0	23010.0761 ¹⁾	
18	M16	17,6	28	20,0	10	18	128,0	68,0	23010.0781	

¹⁾ Dimensioni non previste dalla norma DIN.

Esempio di applicazione



Conformità

Conforme alla normativa RoHS

Conforme alla Direttiva 2011/65/UE e alla Direttiva 2015/863.

Non contiene sostanze SVHC

Nessuna sostanza SVHC con più dello 0,1% p/p contenuto - elenco SVHC [REACH] aggiornato al 27.06.2024.

Non contiene sostanze della Proposition 65

Nessuna sostanza contemplata nella Proposition 65

<https://www.P65Warnings.ca.gov/>

Privo di minerali di conflitto

Questo prodotto non contiene sostanze designate come "minerali da conflitto" come tantalio, stagno, oro o tungsteno della Repubblica Democratica del Congo o dei paesi limitrofi.