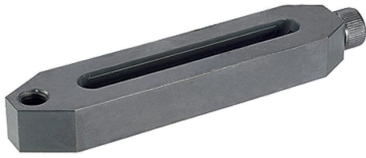


## Straight Clamps • long

EH 23700.

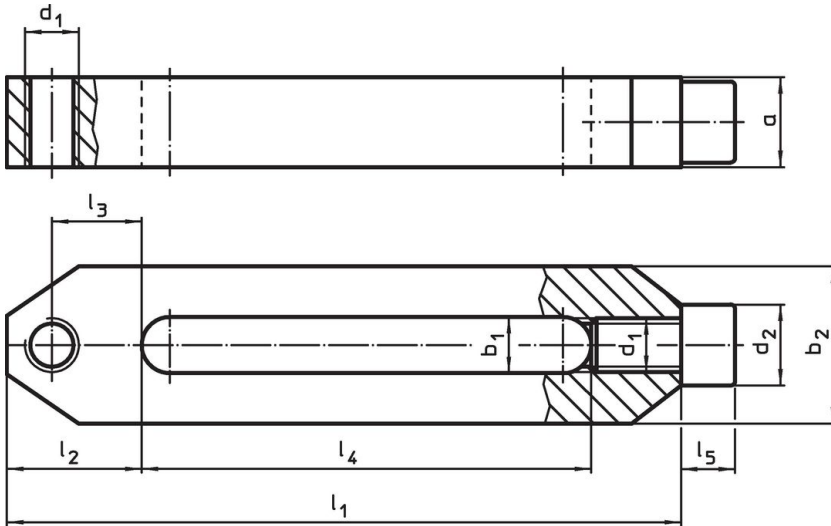


### Product Description

#### Material

- Heat-treated steel, tempered, blackened

### Drawing



### Order information

Dimensions										[g]	Art. No.
b <sub>1</sub>	l <sub>1</sub>	a	b <sub>2</sub>	d <sub>1</sub> [mm]	l <sub>2</sub>	l <sub>3</sub>	l <sub>4</sub>	l <sub>5</sub>	d <sub>2</sub>		
12.5	156	20	35.0	M12	30	20	106	12	18	601	<a href="#">23700.0042</a>
17.0	196	30	45.5	M16	35	22	136	16	24	1430	<a href="#">23700.0046</a>

## Application example



## Compliance

### RoHS compliant

Compliant according to Directive 2011/65/EU and Directive 2015/863.

### Does not contain SVHC substances

No SVHC substances with more than 0.1% w/w contained - SVHC list [REACH] as of 27.06.2024.

### Does not contain Proposition 65 substances

No Proposition 65 substances included.

<https://www.P65Warnings.ca.gov/>

### Free from Conflict Minerals

This product does not contain any substances designated as "conflict minerals" such as tantalum, tin, gold or tungsten from the Democratic Republic of Congo or adjacent countries.