

Seating Pins · partially DIN 6321 (old standard)

EH 22630.



Product Description

Seating pins according to DIN 6321 (old standard) can be used as supports for workpieces but also as stops and feet.
The bearing surface has no centre.

Material

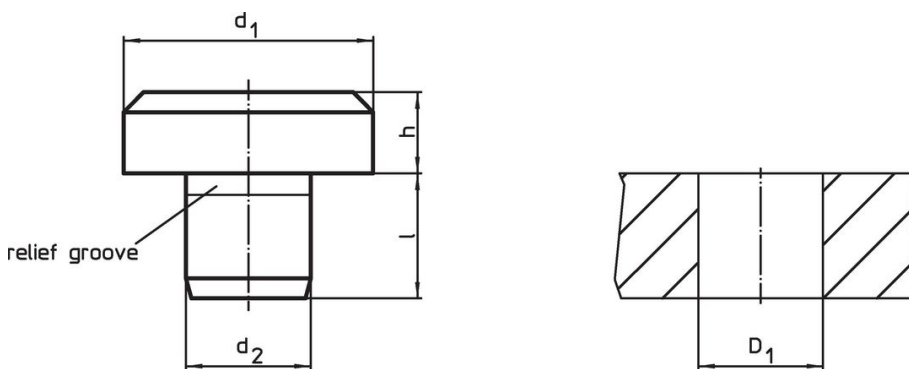
- Tool steel, hardened, ground

More information

Further products


- Seating Pins, DIN 6321

Drawing

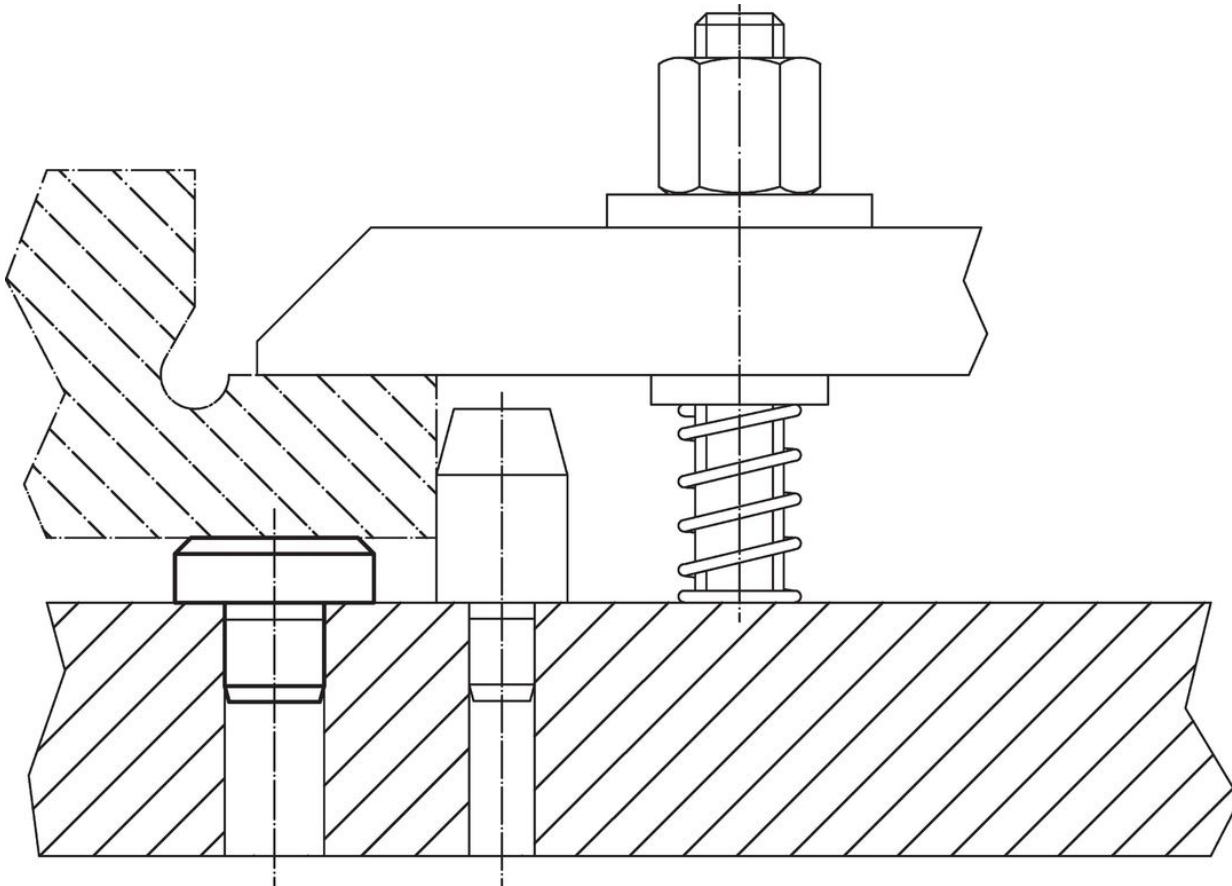


Order information

d ₁	Dimensions			l	Location hole		Art. No.
	h h9	d ₂ n6	[mm]		D ₁ H7	[g]	
DIN 6321, old standard							
6	5.0	4	6.0	4	1.8	22630.0001	
10	8.0	6	8.0	6	6.2	22630.0002	
16	5.0	8	10.0	8	11.0	22630.0003	
16	13.0	8	10.0	8	24.0	22630.0004	
25	8.0	12	14.0	12	41.0	22630.0005	
25	20.0	12	14.0	12	88.0	22630.0006	
40	13.0	20	20.0	20	171.0	22630.0007	
40	32.0	20	20.0	20	358.0	22630.0008	
intermediate sizes							
6	2.5	4	6.5	4	1.2	22630.0110	
6	4.5	4	8.5	4	1.9	22630.0112	
8	4.0	5	8.0	5	3.1	22630.0116	
8	7.0	5	8.0	5	4.2	22630.0118	
10	4.5	6	8.5	6	4.4	22630.0120	
12	6.0	6	10.0	6	7.6	22630.0124	
12	10.0	6	10.0	6	11.0	22630.0126	
20	6.0	10	12.0	10	21.0	22630.0130	
20	12.0	10	12.0	10	36.0	22630.0132	
25	30.0	12	14.0	12	124.0	22630.0135	

d ₁	Dimensions			l	Location hole D ₁ H7 [mm]	 [g]	Art. No.
	h h9 [mm]	d ₂ n6					
30	25.0	16		20.0	16	164.0	22630.0137
30	40.0	16		20.0	16	248.0	22630.0140
30	50.0	16		20.0	16	305.0	22630.0144
30	65.0	16		20.0	16	385.0	22630.0148
30	80.0	20		20.0	20	485.0	22630.0152
30	100.0	20		20.0	20	594.0	22630.0156

Application example



Compliance

RoHS compliant

Compliant according to Directive 2011/65/EU and Directive 2015/863.

Does not contain SVHC substances

No SVHC substances with more than 0.1% w/w contained - SVHC list [REACH] as of 27.06.2024.

Does not contain Proposition 65 substances

No Proposition 65 substances included.

<https://www.P65Warnings.ca.gov/>

Free from Conflict Minerals

This product does not contain any substances designated as "conflict minerals" such as tantalum, tin, gold or tungsten from the Democratic Republic of Congo or adjacent countries.