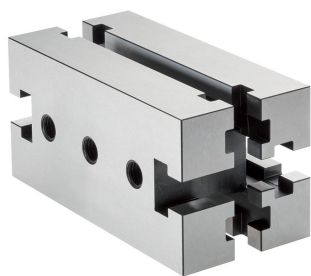


Mounting Blocks

EH 1010.200 - EH 1110.300



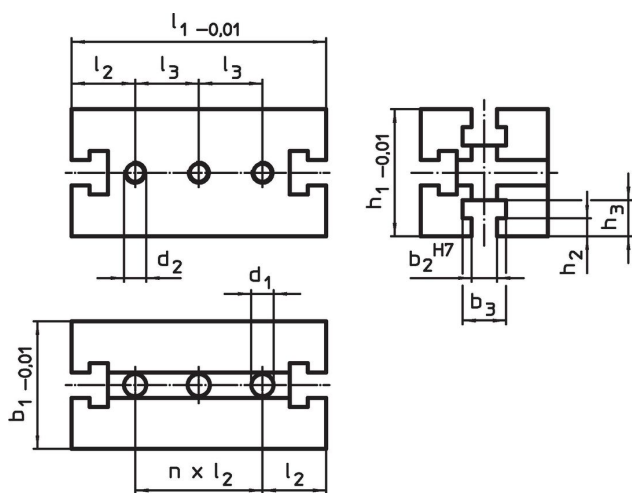
Product Description

This mounting element is a system part of the T-slot system.


Material

- Steel, hardened, ground

Drawing



Order information

System	Dimensions											Amount n	 [g]	Art. No.
	b_1	l_1	b_2	b_3	l_2	l_3	h_1	h_2	h_3	d_1	d_2			
V40	40	80	10	17.2	20	–	40	6.5	12.5	8.25	–	2	587	1010.200
V40	40	120	10	17.2	20	–	40	6.5	12.5	8.25	–	4	1149	1010.300
V70	70	140	14	24.0	35	35	70	10.0	20.0	12.25	M12	2	3800	1110.200
V70	70	210	14	24.0	35	70	70	10.0	20.0	12.25	M12	4	5820	1110.300

Compliance

RoHS compliant

Compliant according to Directive 2011/65/EU and Directive 2015/863.

Does not contain SVHC substances

No SVHC substances with more than 0.1% w/w contained - SVHC list [REACH] as of 27.06.2024.

Does not contain Proposition 65 substances

No Proposition 65 substances included.

<https://www.P65Warnings.ca.gov/>

Free from Conflict Minerals

This product does not contain any substances designated as "conflict minerals" such as tantalum, tin, gold or tungsten from the Democratic Republic of Congo or adjacent countries.