

## Torque Handles

24710.0509



### Product Description

Torque handles are used wherever a limitation of the exerted hand force is required. The handle, similar to a knurled nut / knurled thumb screw, with integrated torque mechanism allows a defined torque limit during tightening. Reaching the torque results in an "over-locking". For releasing the torque is transmitted indefinitely. These handles combine the functionality of a ratchet wrench with the modern and ergonomic design of a knurled nut / knurled thumb screw.

### Material

#### Cap

- Thermoplastic PA 6, light grey, similar to RAL 7035

#### Torque mechanism

- Steel, hardened

#### Handle

- Aluminium, black anodised

#### Inner part

- Steel, blackened

#### Screw

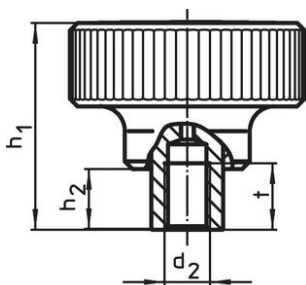
- Steel, blackened

### More information

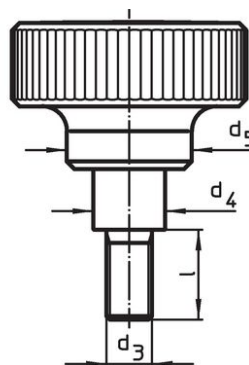
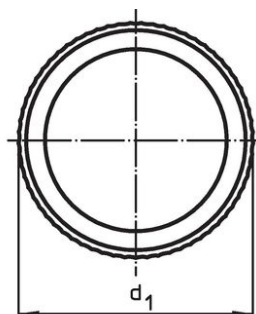
#### Further products

- Three-Lobed Torque Handles

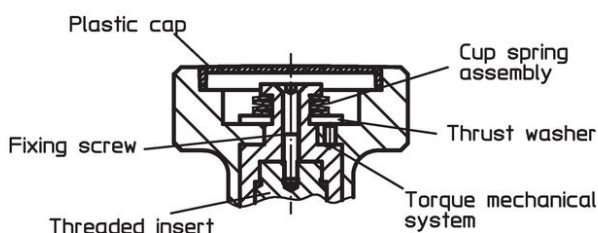
### Drawing



picture 1



picture 2



### Order information

Dimensions							max. [°C]	Tightening torque +/- 10% max. [Nm]	[g]	Art. No.
d <sub>1</sub>	d <sub>3</sub>	l	d <sub>4</sub>	d <sub>5</sub>	h <sub>1</sub>	h <sub>2</sub>				
with screw – picture 2										
52	M12	63	19	32	54	15.5	100	3	274	24710.0509

## Compliance

### RoHS compliant

Contains lead - compliant according to exceptions 6a / 6b / 6c.

### Contains SVHC substances >0,1% w/w

Contains lead - SVHC list [REACH] as of 27.06.2024.

### Contains Proposition 65 substances



Lead can cause cancer and reproductive harm from exposure  
<https://www.P65Warnings.ca.gov/>

### Free from Conflict Minerals

This product does not contain any substances designated as "conflict minerals" such as tantalum, tin, gold or tungsten from the Democratic Republic of Congo or adjacent countries.