

Ball Knobs • metal types similar to DIN 319

24561.0025



Product Description

Material

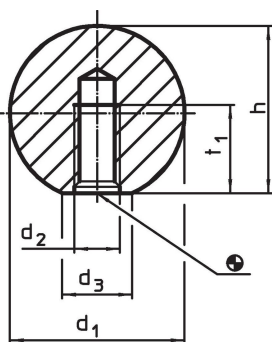
- Steel, polished, bright

More information


Notes

Supplement DIN 319 Form C about metallic versions.

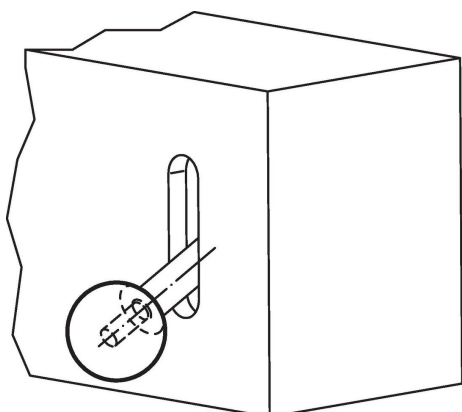
Drawing



Order information

d_1	d_2	Dimensions d_3 ~ [mm]	h ~	t_1 min.	 [g]	Art. No.
Steel						
25	M6	15	22.5	11	58	24561.0025

Application example



Compliance

RoHS compliant

Contains lead - compliant according to exceptions 6a / 6b / 6c.

Contains SVHC substances >0,1% w/w

Contains lead - SVHC list [REACH] as of 23.01.2024.

Contains Proposition 65 substances



Lead can cause cancer and reproductive harm from exposure
<https://www.P65Warnings.ca.gov/>

Free from Conflict Minerals

This product does not contain any substances designated as "conflict minerals" such as tantalum, tin, gold or tungsten from the Democratic Republic of Congo or adjacent countries.