

Tubular Handles • straight

24321.0220



Product Description

Tubular handles are used, for example, on machine doors.

Material

Handle

- Aluminium, anodised

Handle shank

- Zinc die-cast
- Zinc die-cast, plastic coated, silver, similar to RAL 9006, matt structure

Cap

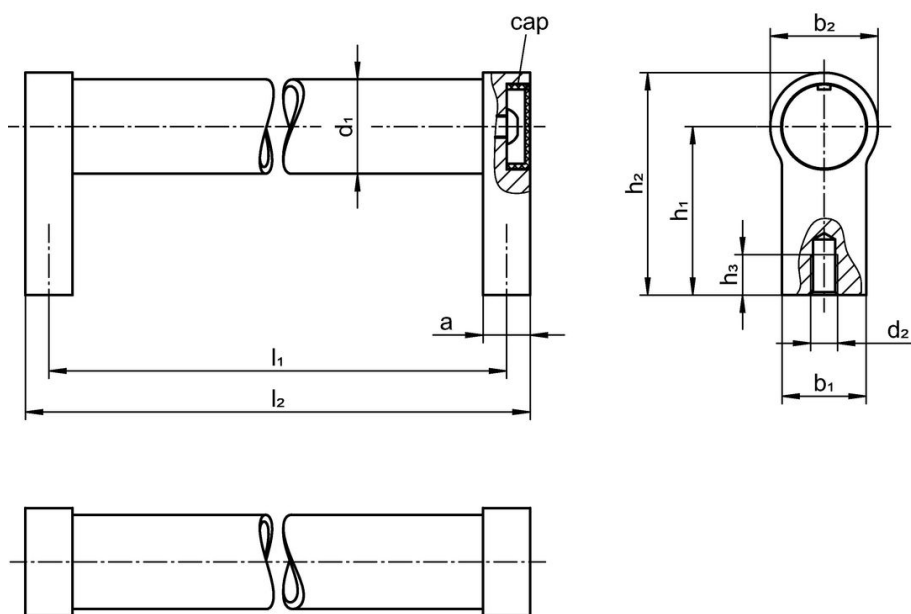
- Plastic, light grey

More information

Notes

Special types on request.

Drawing



Order information

Dimensions									[g]	Art. No.
d_1	l_1 ± 0.25	a	b_1	d_2 [mm]	h_1	h_2	h_3 min.	l_2		
silver similar to RAL 9006										
20	300	12	24	M6	42	54	12	312	230	24321.0220

Compliance

RoHS compliant

Compliant according to Directive 2011/65/EU and Directive 2015/863.

Does not contain SVHC substances

No SVHC substances with more than 0.1% w/w contained - SVHC list [REACH] as of 23.01.2024.

Does not contain Proposition 65 substances

No Proposition 65 substances included.

<https://www.P65Warnings.ca.gov/>

Free from Conflict Minerals

This product does not contain any substances designated as "conflict minerals" such as tantalum, tin, gold or tungsten from the Democratic Republic of Congo or adjacent countries.