

## Self-Aligning Pads · adjustable

22740.0330



### Product Description

Self-aligning pads are used as stop, support and thrust pad and are suitable for installation in clamping elements.

#### Material

##### Ball

- Ball-bearing steel, hardened, bright

##### Body

- Heat-treated steel, tempered, phosphated

##### Nut

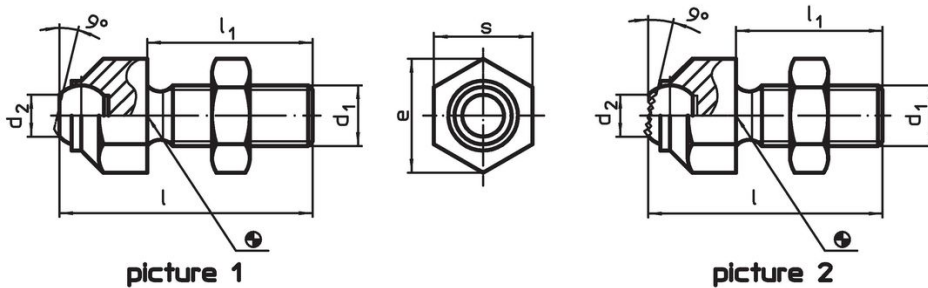
- Steel, blackened (ISO 4035)

#### More information

##### Notes

Ball protected against rotating.  
Loading capacity valid for steel and stainless steel designs.  
Special types on request.

### Drawing



### Order information

d <sub>1</sub>	l	Dimensions			Ball diameter	Load capacity for static load max. [kN]	Tightening torque max. [Nm]	[g]	Art. No.
		l <sub>1</sub>	d <sub>2</sub>	e					
with flat-faced ball, bearing surface ribbed – picture 2, Heat-treated steel									
M20	77.3	50	20	33	25	90	407	276	22740.0330

## Application example



## Compliance

### RoHS compliant

Compliant according to Directive 2011/65/EU and Directive 2015/863.

### Does not contain SVHC substances

No SVHC substances with more than 0.1% w/w contained - SVHC list [REACH] as of 27.06.2024.

### Does not contain Proposition 65 substances

No Proposition 65 substances included.  
<https://www.P65Warnings.ca.gov/>

### Free from Conflict Minerals

This product does not contain any substances designated as "conflict minerals" such as tantalum, tin, gold or tungsten from the Democratic Republic of Congo or adjacent countries.