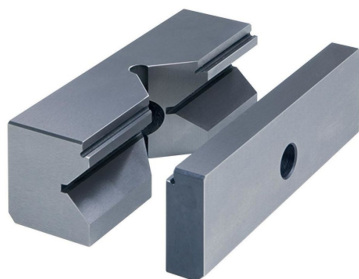


## Prismatic Jaws

1701.270



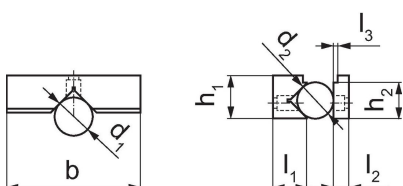
### Product Description

- For horizontal and vertical clamping of round and flat workpieces
- Please order mounting screws separately (Art. No. 1701.300)
- This product is supplied as a two piece

### Material

- Steel, hardened

### Drawing



### Order information

Jaw width [mm]	Dimensions								[g]	Art. No.
	b	d <sub>1</sub>	d <sub>2</sub> [mm]	l <sub>1</sub>	l <sub>2</sub>	l <sub>3</sub>	h <sub>1</sub>	h <sub>2</sub>		
125	125	18 – 55	12 – 28	35	15	3	40	35	1700	1701.270

### Compliance

#### RoHS compliant

Compliant according to Directive 2011/65/EU and Directive 2015/863.

#### Does not contain SVHC substances

No SVHC substances with more than 0.1% w/w contained - SVHC list [REACH] as of 23.01.2024.

#### Does not contain Proposition 65 substances

No Proposition 65 substances included.

<https://www.P65Warnings.ca.gov/>

#### Free from Conflict Minerals

This product does not contain any substances designated as "conflict minerals" such as tantalum, tin, gold or tungsten from the Democratic Republic of Congo or adjacent countries.