

Hinges • elongated on one side  
EH 25165.



**Product Description**

The different versions cover many applications that require a low load. These metal hinges are characterised by their simple design and the different versions:

- without bores
- with bores
- with bores for countersunk screws

The version without bores can be assembled by welding or by inserting a specific drilling pattern.

**Material**

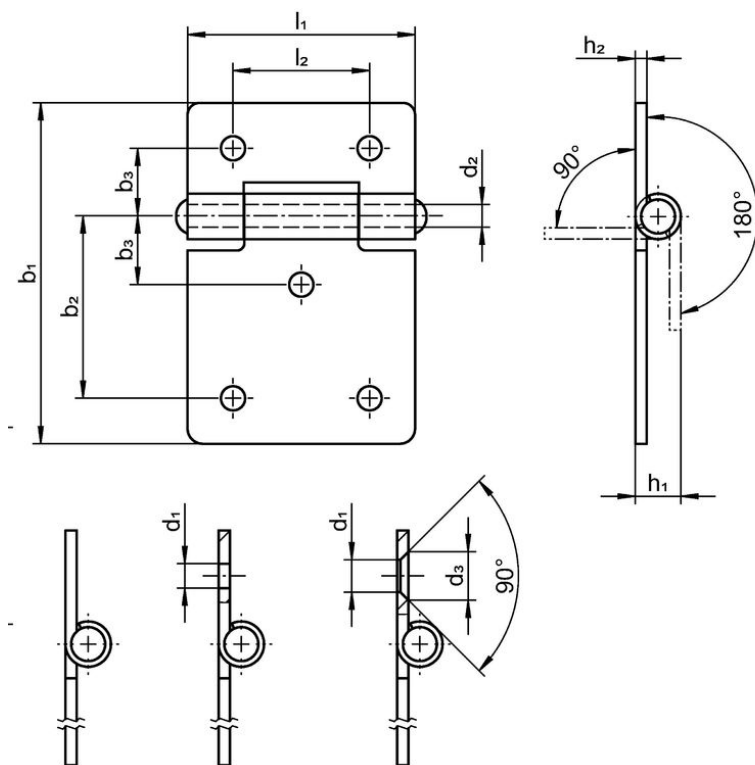
**Body**

- Stainless steel 1.4301
- Steel, zinc-plated by galvanization, passivated

**Axis**

- Stainless steel 1.4301

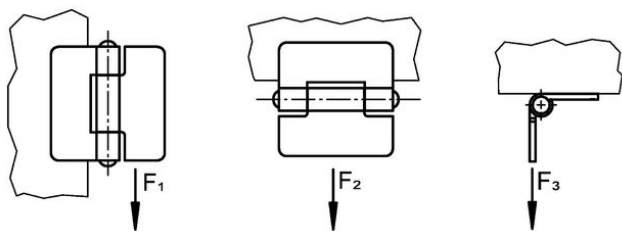
**Drawing**



picture 1

picture 2

picture 3



## Order information

b <sub>1</sub>	l <sub>1</sub>	b <sub>2</sub>	b <sub>3</sub>	Dimensions						Holding force			[g]	Art. No.
				d <sub>1</sub>	d <sub>2</sub>	d <sub>3</sub>	h <sub>1</sub>	h <sub>2</sub>	l <sub>2</sub>	F <sub>1</sub>	F <sub>2</sub>	F <sub>3</sub>		
[mm]										[N]				
<b>without bores – picture 1, Stainless steel</b>														
45	30	–	–	–	3	–	6	1.5	–	700	500	450	20	25165.0035
60	40	–	–	–	4	–	8	2.0	–	1200	1000	1000	47	25165.0055
75	50	–	–	–	6	–	10	2.0	–	1600	2000	1000	81	25165.0070
90	60	–	–	–	6	–	10	2.0	–	1100	2500	1000	111	25165.0080
<b>with bores – picture 2, Stainless steel</b>														
45	30	24.0	9.0	3.2	3	–	6	1.5	18	700	500	450	19	25165.0135
60	40	32.5	12.5	4.2	4	–	8	2.0	18	1200	1000	1000	45	25165.0155
75	50	40.0	15.0	5.2	6	–	10	2.0	30	1600	2000	1000	79	25165.0170
90	60	48.0	18.0	5.2	6	–	10	2.0	36	1100	2500	1000	108	25165.0180
<b>with bores – picture 2, Steel</b>														
45	30	24.0	9.0	3.2	3	–	6	1.5	18	700	500	450	19	25165.1035
60	40	32.5	12.5	4.2	4	–	8	2.0	25	1200	1000	1000	45	25165.1055
75	50	40.0	15.0	5.2	6	–	10	2.0	30	1600	2000	1000	79	25165.1070
90	60	48.0	18.0	5.2	6	–	10	2.0	36	1100	2500	1000	108	25165.1080
<b>with bores for countersunk screws – picture 3, Stainless steel</b>														
45	30	24.0	9.0	4.0	3	6.4	6	1.5	18	700	500	450	19	25165.0235
60	40	32.5	12.5	5.0	4	8.3	8	2.0	25	1200	1000	1000	45	25165.0255
75	50	40.0	15.0	5.0	6	8.3	10	2.0	30	1600	2000	1000	79	25165.0270
90	60	48.0	18.0	5.0	6	8.3	10	2.0	36	1100	2500	1000	108	25165.0280
<b>with bores for countersunk screws – picture 3, Steel</b>														
45	30	24.0	9.0	4.0	3	6.4	6	1.5	18	700	500	450	19	25165.2035
60	40	32.5	12.5	5.0	4	8.3	8	2.0	25	1200	1000	1000	45	25165.2055
75	50	40.0	15.0	5.0	6	8.3	10	2.0	30	1600	2000	1000	79	25165.2070
90	60	48.0	18.0	5.0	6	8.3	10	2.0	36	1100	2500	1000	108	25165.2080

## Compliance

## RoHS compliant

Compliant according to Directive 2011/65/EU and Directive 2015/863.

## Does not contain SVHC substances

No SVHC substances with more than 0.1% w/w contained - SVHC list [REACH] as of 23.01.2024.

## Does not contain Proposition 65 substances

No Proposition 65 substances included.

<https://www.P65Warnings.ca.gov/>

## Free from Conflict Minerals

This product does not contain any substances designated as "conflict minerals" such as tantalum, tin, gold or tungsten from the Democratic Republic of Congo or adjacent countries.