

Hinges · with mounting thread
EH 25160.



Product Description

These hinges are characterised by the compact, robust design and the integrated mounting threads.

Material

Grub Screw

- Stainless steel

Body

- Zinc die-cast, chromed
- Zinc die-cast, plastic coated, silver, similar to RAL 9006, matt structure
- Zinc die-cast, plastic coated, black, similar to RAL 9005, matt structure
- Stainless steel 1.4308

Axis

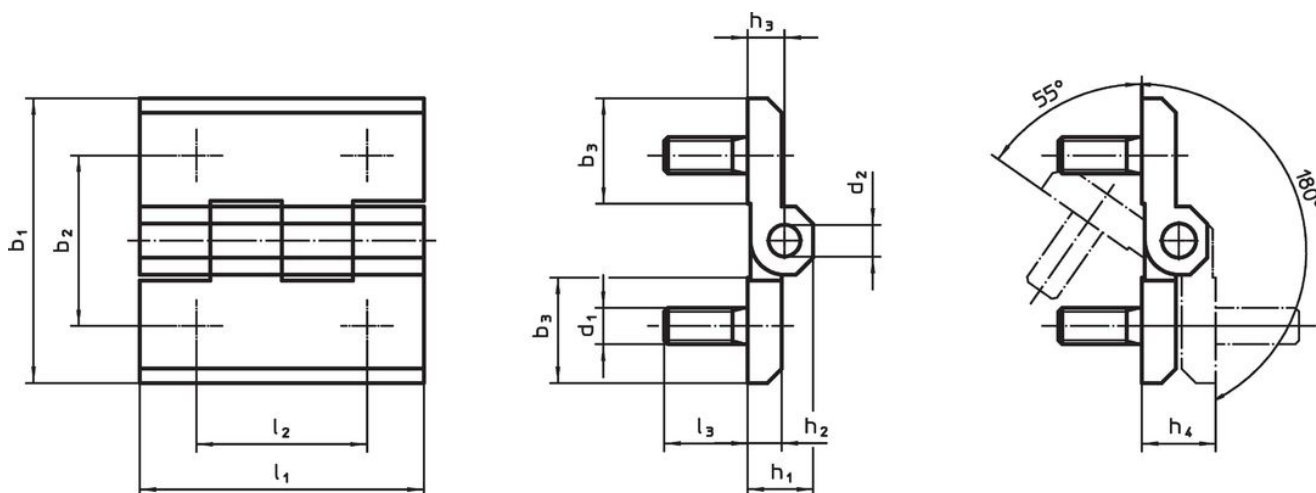
- Stainless steel

More information

Further products

- Spacer Plates, for hinges

Drawing



Order information

b ₁	b ₂	b ₃	d ₁	d ₂	Dimensions								[g]	Art. No.
					h ₁	h ₂	h ₃	h ₄ +0.5	l ₁	l ₂	l ₃	[mm]		
Zinc die-cast, chromed														
40	25	14.0	M5	4	9.0	5	5.5	11	40	25	12	61	25160.0050	
50	30	18.5	M6	6	11.5	6	6.5	13	50	30	12	103	25160.0055	
60	36	21.5	M8	8	15.0	8	8.5	17	60	36	14	194	25160.0060	
Zinc die-cast, silver														
40	25	14.0	M5	4	9.0	5	5.5	11	40	25	12	61	25160.0150	
50	30	18.5	M6	6	11.5	6	6.5	13	50	30	12	103	25160.0155	
60	36	21.5	M8	8	15.0	8	8.5	17	60	36	14	194	25160.0160	
Zinc die-cast, black														
40	25	14.0	M5	4	9.0	5	5.5	11	40	25	12	61	25160.0250	
50	30	18.5	M6	6	11.5	6	6.5	13	50	30	12	103	25160.0255	
60	36	21.5	M8	8	15.0	8	8.5	17	60	36	14	194	25160.0260	
Stainless steel														
40	25	14.0	M5	4	9.0	5	5.5	11	40	25	11	68	25160.0350	
50	30	18.5	M6	6	11.5	6	6.5	13	50	30	13	128	25160.0355	
60	36	21.5	M8	8	15.0	8	8.5	17	60	36	17	252	25160.0360	

Compliance

RoHS compliant

Compliant according to Directive 2011/65/EU and Directive 2015/863.

Does not contain SVHC substances

No SVHC substances with more than 0.1% w/w contained - SVHC list [REACH] as of 23.01.2024.

Does not contain Proposition 65 substances

No Proposition 65 substances included.

<https://www.P65Warnings.ca.gov/>

Free from Conflict Minerals

This product does not contain any substances designated as "conflict minerals" such as tantalum, tin, gold or tungsten from the Democratic Republic of Congo or adjacent countries.