

Machine Handles • DIN 39

EH 24450.

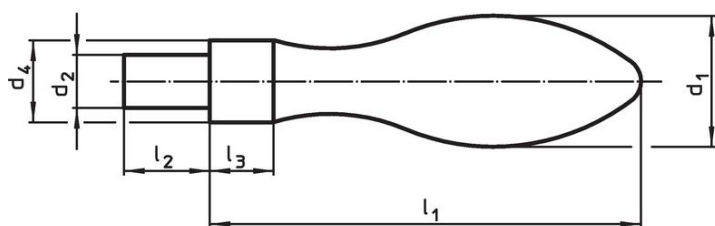


Product Description

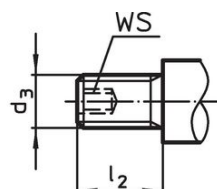
Material

- Steel, turned, zinc-plated by galvanization, passivated
- Stainless steel 1.4404

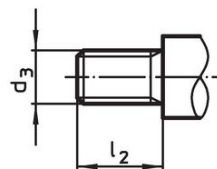
Drawing



picture 1



picture 2

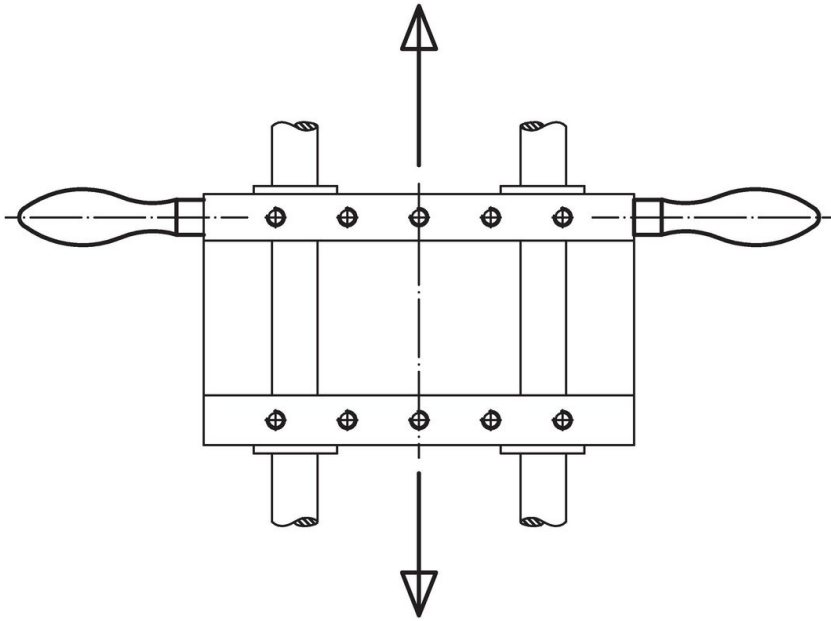


picture 3

Order information

d ₁	d ₂ h8	d ₃	Dimensions			WS	[g]	Art. No.
			d ₄ h13 [mm]	l ₁ ~	l ₂			
with smooth lug, form D – picture 1, Steel								
16	7	–	10	50	11	7	–	24450.0016
20	8	–	13	64	13	8	–	24450.0020
25	10	–	16	80	14	10	–	24450.0025
32	13	–	20	100	21	13	–	24450.0032
36	16	–	22	112	26	14	–	24450.0036
with male thread lug, form E – picture 2, Steel								
16	–	M 6	10	50	11	7	3	24450.0116
20	–	M 8	13	64	13	8	4	24450.0120
25	–	M10	16	80	14	10	5	24450.0125
32	–	M12	20	100	21	13	6	24450.0132
36	–	M16	22	112	26	14	8	24450.0136
with male thread lug, form E – picture 3, Stainless steel								
16	–	M 6	10	50	11	7	–	24450.0316
20	–	M 8	13	64	13	8	–	24450.0320
25	–	M10	16	80	14	10	–	24450.0325

Application example



Compliance

For detailed compliance information please select the desired article number.