

## Tubular Handles • front mounting

EH 24321.



### Product Description

Tubular handles are used, for example, on machine doors. These tubular handles made of aluminium are characterised by their ergonomic and robust construction and modern design. This version is equipped with angled handle legs (legs).

### Material

#### Handle

- Aluminium, anodised
- Aluminium, plastic coated, similar to RAL 9005 black, matt structure

#### Handle shank

- Zinc die-cast, plastic coated, silver, similar to RAL 9006, matt structure
- Zinc die-cast, plastic coated, black, similar to RAL 9005, matt structure

#### Cap

- Plastic, light grey

#### Covering

- Plastic, light grey
- Plastic, black

### Assembly

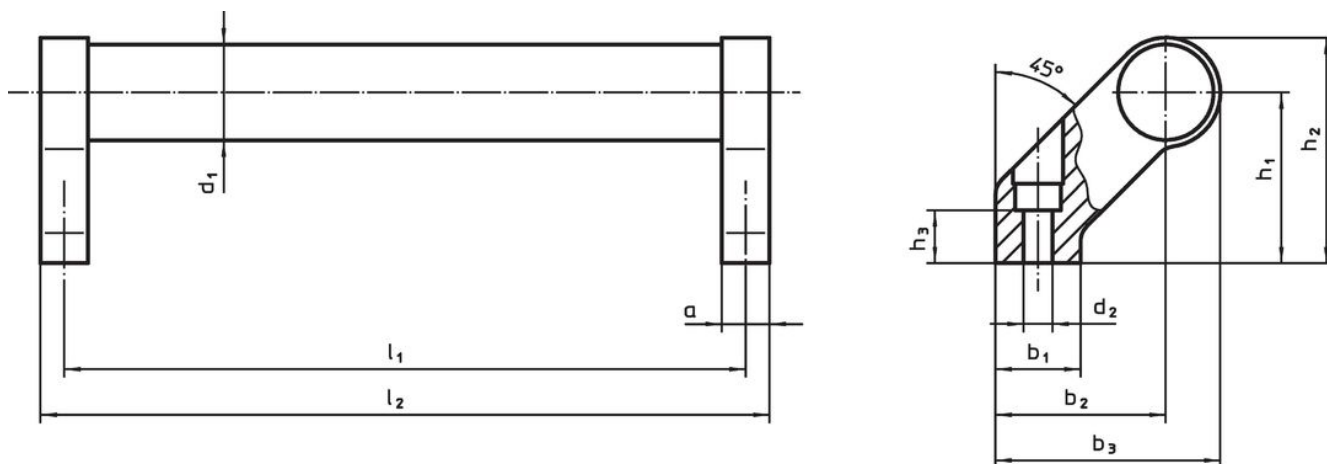
The handles can be mounted to the component from the front (operating side) using cylinder screws. The hole is closed with a plastic covering.

### More information

### Notes

Special types on request.

### Drawing



### Order information

d <sub>1</sub>	l <sub>1</sub> ±0.25	a	b <sub>1</sub>	b <sub>2</sub>	Dimensions			d <sub>2</sub>	h <sub>1</sub>	h <sub>2</sub>	h <sub>3</sub> min.	l <sub>2</sub>	[g]	Art. No.
					b <sub>3</sub>	[mm]								
<b>silver</b>														
28	200	14	25	50	66	6.5	50	66	17	214	406	24321.0100		
28	250	14	25	50	66	6.5	50	66	17	264	437	24321.0105		
28	300	14	25	50	66	6.5	50	66	17	314	448	24321.0110		
28	350	14	25	50	66	6.5	50	66	17	364	493	24321.0115		
28	400	14	25	50	66	6.5	50	66	17	414	520	24321.0120		
28	500	14	25	50	66	6.5	50	66	17	514	556	24321.0125		
28	600	14	25	50	66	6.5	50	66	17	614	631	24321.0130		
<b>black</b>														
28	200	14	25	50	66	6.5	50	66	17	214	406	24321.0600		
28	250	14	25	50	66	6.5	50	66	17	264	437	24321.0605		
28	300	14	25	50	66	6.5	50	66	17	314	448	24321.0610		

d <sub>1</sub>	l <sub>1</sub> ±0.25	a	b <sub>1</sub>	b <sub>2</sub>	Dimensions						[g]	Art. No.
					b <sub>3</sub>	d <sub>2</sub>	h <sub>1</sub>	h <sub>2</sub>	h <sub>3</sub> min.	l <sub>2</sub>		
[mm]												
28	350	14	25	50	66	6.5	50	66	17	364	493	<a href="#">24321.0615</a>
28	400	14	25	50	66	6.5	50	66	17	414	520	<a href="#">24321.0620</a>
28	500	14	25	50	66	6.5	50	66	17	514	556	<a href="#">24321.0625</a>
28	600	14	25	50	66	6.5	50	66	17	614	631	<a href="#">24321.0630</a>

## Compliance

### RoHS compliant

Contains lead - compliant according to exceptions 6a / 6b / 6c.

### Contains SVHC substances >0,1% w/w

Contains lead - SVHC list [REACH] as of 27.06.2024.

### Contains Proposition 65 substances



Lead can cause cancer and reproductive harm from exposure  
<https://www.P65Warnings.ca.gov/>

### Free from Conflict Minerals

This product does not contain any substances designated as "conflict minerals" such as tantalum, tin, gold or tungsten from the Democratic Republic of Congo or adjacent countries.