

Height Adjusting Cylinders

EH 23310.



Product Description

The height adjusting cylinders can be used to extend the clamping height of down-thrust clamps EH 23310. They are also used in combination with seating pins (EH 22680.), pins (EH 22690.) and self-aligning pads (EH 22730. - EH 22741.).

Material

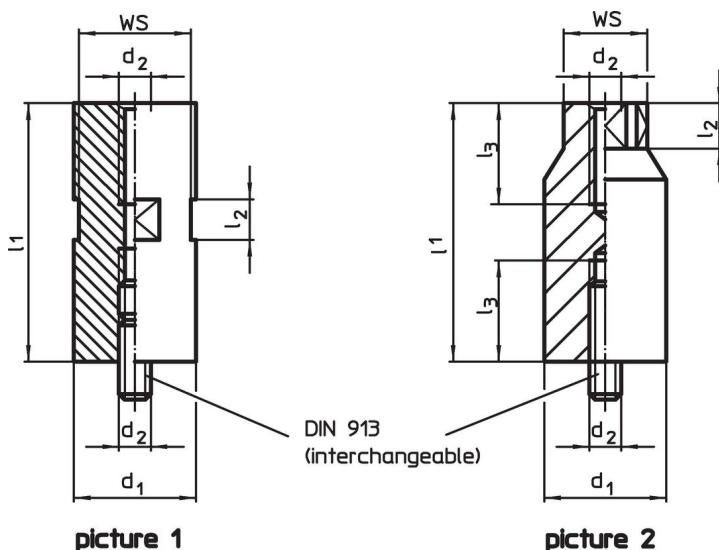
- Steel, case-hardened, blackened, ground

More information

Further products


- Seating Pins, ribbed or pointed
- Seating Pins, pin shape
- Pins
- Seating Pins, adjustable
- Self-Aligning Pads
- Self-Aligning Pads, with hard metal ball, ribbed
- Self-Aligning Pads, self-resetting
- Self-Aligning Pads, with hard metal ball, ribbed and self-resetting
- Self-Aligning Pads, adjustable
- Self-Aligning Pads, adjustable, self-resetting

Drawing

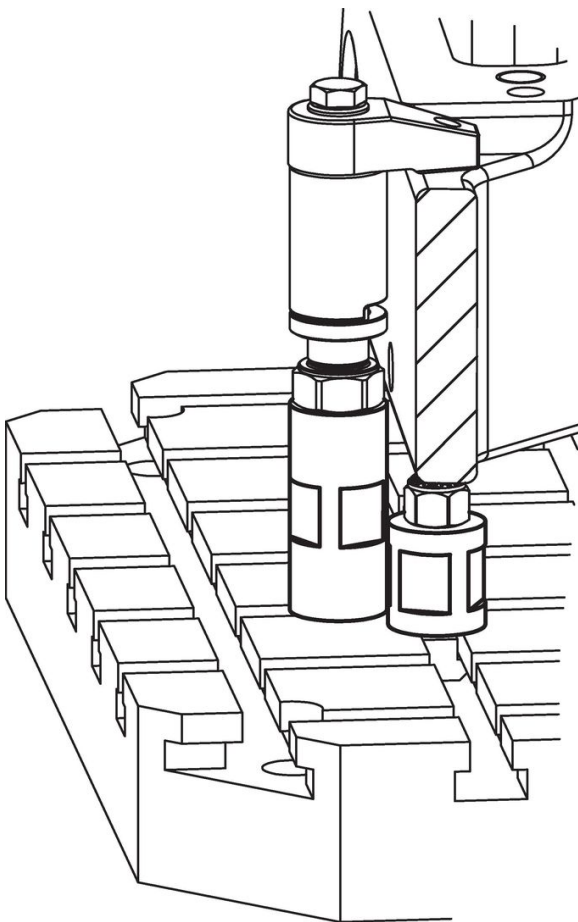


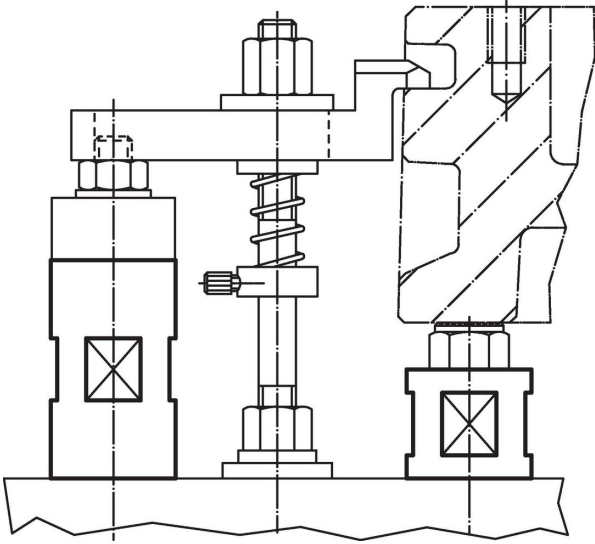
Order information

| d ₁ -0.1 | l ₁ | Dimensions | | | WS | [g] | Art. No. |
|------------------------|----------------|----------------|----------------|----------------|------|------|----------------------------|
| | | d ₂ | l ₂ | l ₃ | | | |
| | | [mm] | | | [mm] | | |
| picture 1 | | | | | | | |
| 25 | 20±0.01 | M 8 | 10 | – | 22 | 75 | 23310.0125 |
| 25 | 40±0.01 | M 8 | 20 | – | 22 | 150 | 23310.0126 |
| 25 | 80±0.01 | M 8 | 20 | – | 22 | 306 | 23310.0127 |
| 32 | 35±0.01 | M10 | 20 | – | 27 | 202 | 23310.0130 |
| 32 | 70±0.01 | M10 | 20 | – | 27 | 411 | 23310.0132 |
| 32 | 140±0.01 | M10 | 20 | – | 27 | 848 | 23310.0134 |
| 40 | 35±0.01 | M12 | 20 | – | 36 | 336 | 23310.0140 |
| 40 | 70±0.01 | M12 | 20 | – | 36 | 673 | 23310.0141 |
| 40 | 140±0.01 | M12 | 20 | – | 36 | 1366 | 23310.0142 |
| 40 | 35±0.01 | M16 | 20 | – | 36 | 331 | 23310.0145 |
| 40 | 70±0.01 | M16 | 20 | – | 36 | 663 | 23310.0146 |
| 40 | 140±0.01 | M16 | 20 | – | 36 | 1330 | 23310.0147 |
| 60 | 35±0.01 | M12 | 20 | – | 55 | 765 | 23310.0160 |

| d ₁ -0.1 | Dimensions | | | | WS [mm] |  | Art. No. |
|------------------------|----------------|----------------|----------------|----------------|------------|-------------------------------------------------------------------------------------|----------------------------|
| | l ₁ | d ₂ | l ₂ | l ₃ | | | |
| | [mm] | | | | | | |
| 60 | 70±0.01 | M12 | 20 | – | 55 | 1533 | 23310.0161 |
| 60 | 140±0.01 | M12 | 20 | – | 55 | 3096 | 23310.0162 |
| 60 | 35±0.01 | M16 | 20 | – | 55 | 763 | 23310.0165 |
| 60 | 70±0.01 | M16 | 20 | – | 55 | 1522 | 23310.0166 |
| 60 | 140±0.01 | M16 | 20 | – | 55 | 3056 | 23310.0167 |
| 60 | 50±0.01 | M20 | 20 | – | 55 | 1087 | 23310.0170 |
| 60 | 100±0.01 | M20 | 20 | – | 55 | 2130 | 23310.0171 |
| 60 | 200±0.01 | M20 | 20 | – | 55 | 4335 | 23310.0172 |
| 70 | 50±0.01 | M24 | 25 | – | 65 | 1361 | 23310.0241 |
| 70 | 100±0.01 | M24 | 25 | – | 65 | 2721 | 23310.0242 |
| picture 2 | | | | | | | |
| 90 | 200±0.02 | M24 | 35 | 50 | 65 | 8860 | 23310.0243 |
| 90 | 300±0.02 | M24 | 35 | 50 | 65 | 13820 | 23310.0244 |

Application example





Compliance

For detailed compliance information please select the desired article number.