

## Supporting Elements · for clamps

EH 23200.



### Product Description

Supporting elements are used in combination with clamps.

#### Material

##### Knurled screw

- Brass

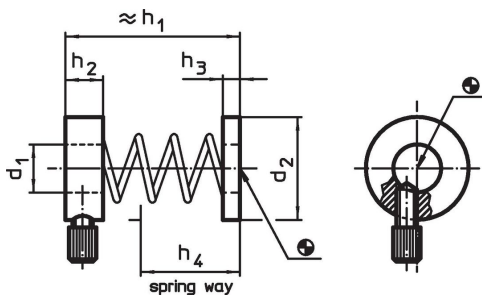
##### Rings

- Aluminium, highly refractory

##### Spring

- Stainless steel

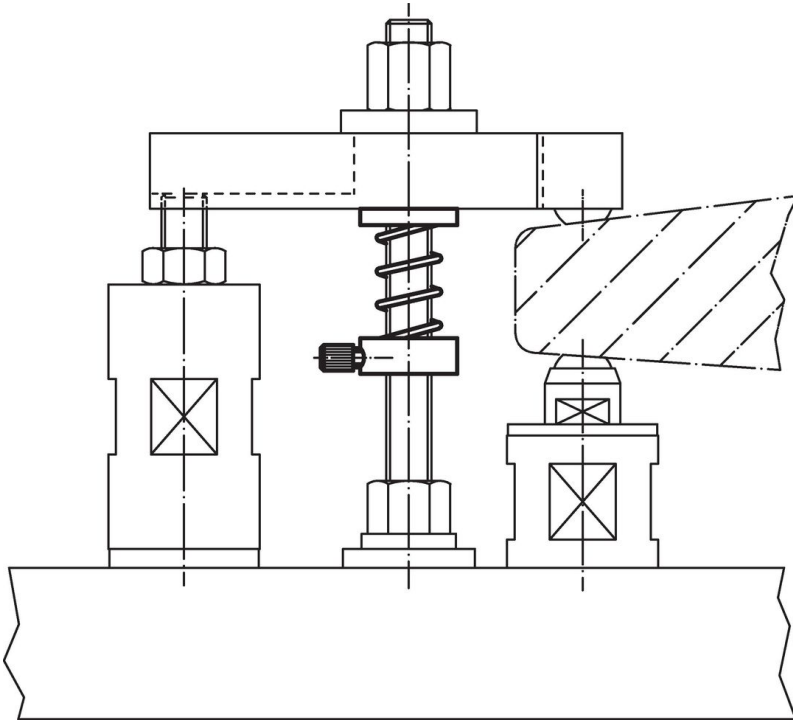
### Drawing



### Order information

d <sub>1</sub>	d <sub>2</sub>	Dimensions				For screw	[g]	Art. No.
		h <sub>1</sub> [mm]	h <sub>2</sub>	h <sub>3</sub>	h <sub>4</sub>			
8.5	24	35	11	5	14	M 6, M8	24	<a href="#">23200.0010</a>
14.0	28	51	11	5	29	M10, M12	28	<a href="#">23200.0020</a>
16.5	35	60	12	5	35	M16	44	<a href="#">23200.0030</a>

## Application example



## Compliance

### Non-RoHS compliant

Not compliant according to Directive 2011/65/EU and Directive 2015/863.

### Contains SVHC substances >0,1% w/w

Contains lead - SVHC list [REACH] as of 27.06.2024.

### Contains Proposition 65 substances



Lead can cause cancer and reproductive harm from exposure  
<https://www.P65Warnings.ca.gov/>

### Free from Conflict Minerals

This product does not contain any substances designated as "conflict minerals" such as tantalum, tin, gold or tungsten from the Democratic Republic of Congo or adjacent countries.