

## Seating Pins · pin shape

EH 22680.



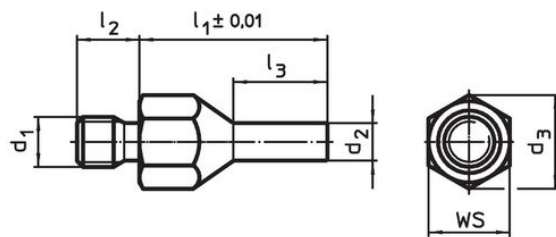
### Product Description

To be used as solid and precise seat and stop. The pin-shaped form of this locating pin allows an application in components with narrow seating points. Bearing surface induction hardened and grounded.

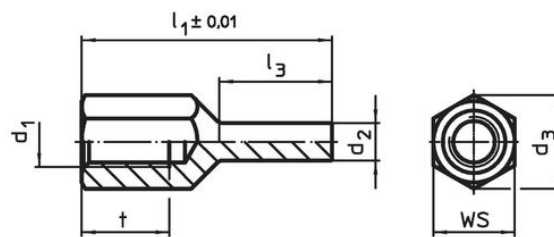
### Material

- Heat-treated steel, tempered, blackened

### Drawing




picture 1



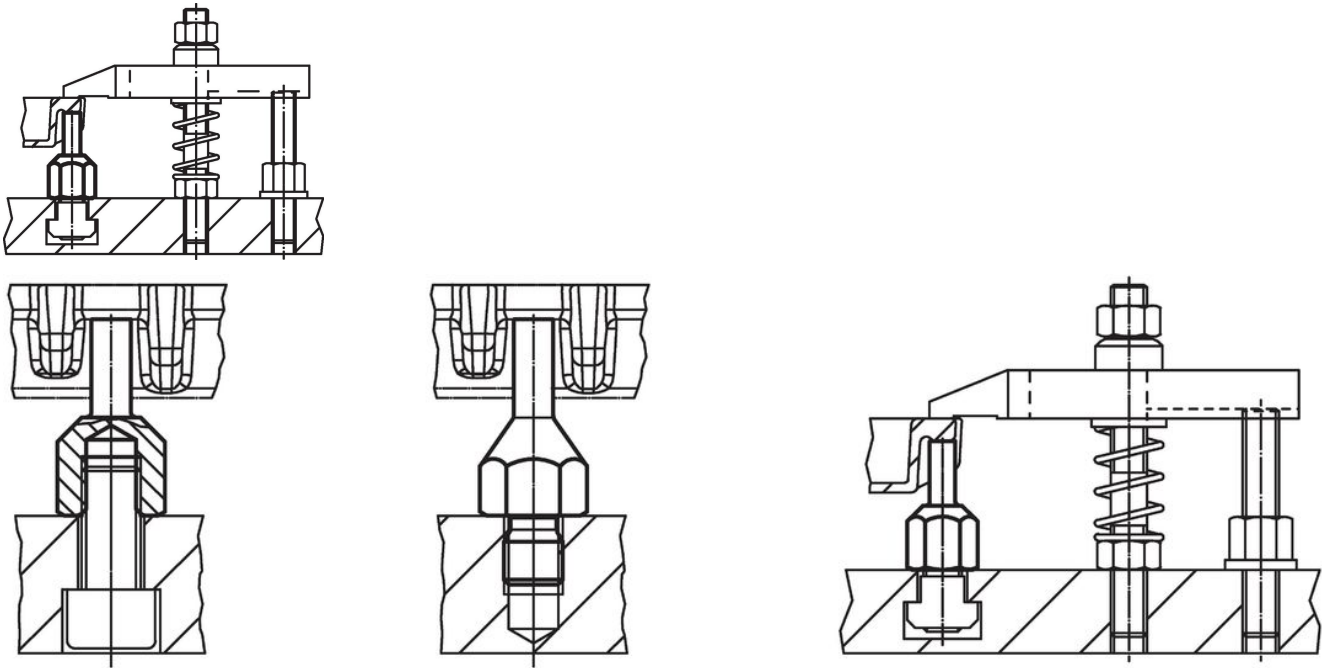
picture 2

### Order information

$l_1$ $\pm 0.01$	$d_1$	$d_2$	Dimensions				$d_3$	WS [mm]	Tightening torque max. [Nm]	[g]	Art. No.
			$l_2$	$l_3$	$t$	[mm]					
<b>with male thread – picture 1</b>											
20	M 6	4	8	10.0	–	11.0	10	7	7.7	22680.0402	
30	M 6	4	8	15.0	–	11.0	10	7	12.0	22680.0404	
30	M 8	4	10	15.0	–	14.4	13	18	17.0	22680.0412	
40	M 8	4	10	20.0	–	14.4	13	18	23.0	22680.0414	
30	M 8	6	10	15.0	–	14.4	13	18	20.0	22680.0416	
40	M 8	6	10	20.0	–	14.4	13	18	30.0	22680.0418	
30	M10	6	14	15.0	–	19.0	17	32	30.0	22680.0422	
50	M10	6	14	25.0	–	19.0	17	32	51.0	22680.0424	
30	M10	8	14	15.0	–	19.0	17	32	35.0	22680.0426	
50	M10	8	14	25.0	–	19.0	17	32	58.0	22680.0428	
40	M12	6	14	20.0	–	21.2	19	60	48.0	22680.0432	
60	M12	6	14	30.0	–	21.2	19	60	75.0	22680.0434	
40	M12	8	14	20.0	–	21.2	19	60	56.0	22680.0436	
60	M12	8	14	30.0	–	21.2	19	60	83.0	22680.0438	
<b>with female thread – picture 2</b>											
20	M 6	4	–	8.5	6	11.0	10	7	5.7	22680.0452	
30	M 6	4	–	13.5	9	11.0	10	7	8.9	22680.0454	
30	M 8	4	–	13.0	10	14.4	13	18	13.0	22680.0462	
40	M 8	4	–	18.0	14	14.4	13	18	18.0	22680.0464	
30	M 8	6	–	13.0	10	14.4	13	18	16.0	22680.0466	
40	M 8	6	–	18.0	14	14.4	13	18	21.0	22680.0468	
30	M10	6	–	12.0	10	19.0	17	32	24.0	22680.0472	
50	M10	6	–	25.0	15	19.0	17	32	38.0	22680.0474	
30	M10	8	–	12.0	10	19.0	17	32	28.0	22680.0476	
50	M10	8	–	25.0	15	19.0	17	32	44.0	22680.0478	

l <sub>1</sub> ±0.01	d <sub>1</sub>	d <sub>2</sub>	Dimensions				WS	Tightening torque max.		Art. No.
			l <sub>2</sub>	l <sub>3</sub>	t	d <sub>3</sub>				
[mm]										
40	M12	6	–	18.0	12	21.2	19	60	36.0	<a href="#">22680.0482</a>
60	M12	6	–	28.0	18	21.2	19	60	56.0	<a href="#">22680.0484</a>
40	M12	8	–	18.0	12	21.2	19	60	41.0	<a href="#">22680.0486</a>
60	M12	8	–	28.0	18	21.2	19	60	63.0	<a href="#">22680.0488</a>

### Application example



### Compliance

#### RoHS compliant

Compliant according to Directive 2011/65/EU and Directive 2015/863.

#### Does not contain SVHC substances

No SVHC substances with more than 0.1% w/w contained - SVHC list [REACH] as of 23.01.2024.

#### Does not contain Proposition 65 substances

No Proposition 65 substances included.

<https://www.P65Warnings.ca.gov/>

#### Free from Conflict Minerals

This product does not contain any substances designated as "conflict minerals" such as tantalum, tin, gold or tungsten from the Democratic Republic of Congo or adjacent countries.