

Palm Grips • DIN 6335 light metal

24630.0240



Product Description

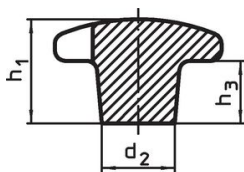
These palm grips are manufactured according to DIN 6335.

Material

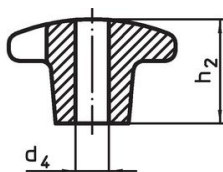
Handle

- Light metal Al, unpolished

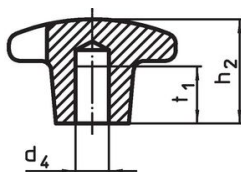
Drawing



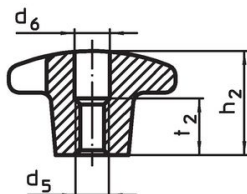
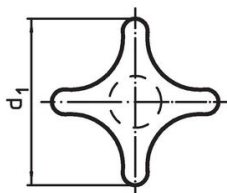
picture 1



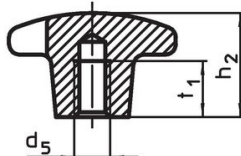
picture 2



picture 3



picture 4

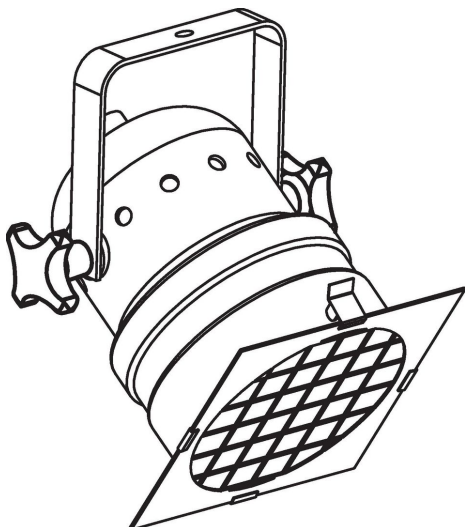


picture 5

Order information

| d ₁ | d ₂ | Dimensions | | | [g] | Art. No. |
|--|----------------|------------------------------|----------------|----------------|-----|------------|
| | | d ₄ H7 [mm] | h ₂ | t ₁ | | |
| with smooth blind hole, form C – picture 3, unpolished | | | | | | |
| 40 | 14 | 8 | 25 | 15 | 23 | 24630.0240 |

Application example



Compliance

RoHS compliant

Contains lead - compliant according to exceptions 6a / 6b / 6c.

Contains SVHC substances >0,1% w/w

Contains lead - SVHC list [REACH] as of 23.01.2024.

Contains Proposition 65 substances



Lead can cause cancer and reproductive harm from exposure
<https://www.P65Warnings.ca.gov/>

Free from Conflict Minerals

This product does not contain any substances designated as "conflict minerals" such as tantalum, tin, gold or tungsten from the Democratic Republic of Congo or adjacent countries.