

Height Adjusting Cylinders

23310.0142



Product Description

The height adjusting cylinders can be used to extend the clamping height of down-thrust clamps EH 23310. They are also used in combination with seating pins (EH 22680.), pins (EH 22690.) and self-aligning pads (EH 22730. - EH 22741.).

Material

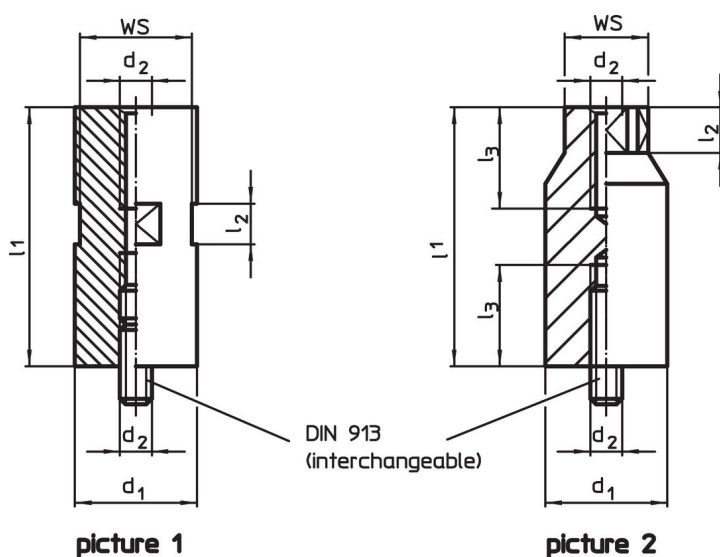
- Steel, case-hardened, blackened, ground

More information


Further products

- Seating Pins, ribbed or pointed
- Seating Pins, pin shape
- Pins
- Seating Pins, adjustable
- Self-Aligning Pads
- Self-Aligning Pads, with hard metal ball, ribbed
- Self-Aligning Pads, self-resetting
- Self-Aligning Pads, with hard metal ball, ribbed and self-resetting
- Self-Aligning Pads, adjustable
- Self-Aligning Pads, adjustable, self-resetting

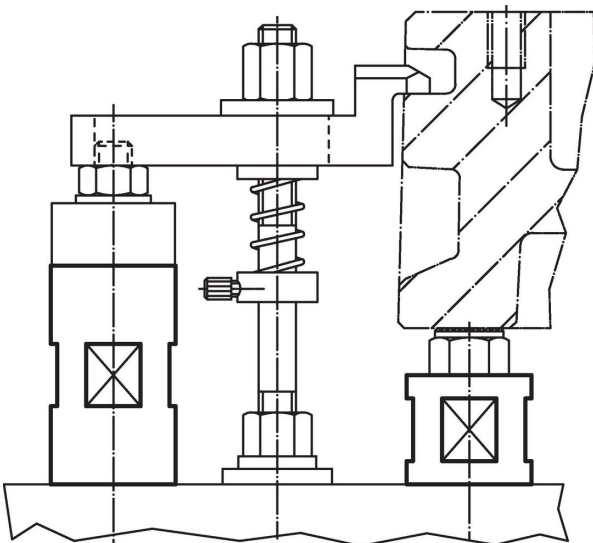
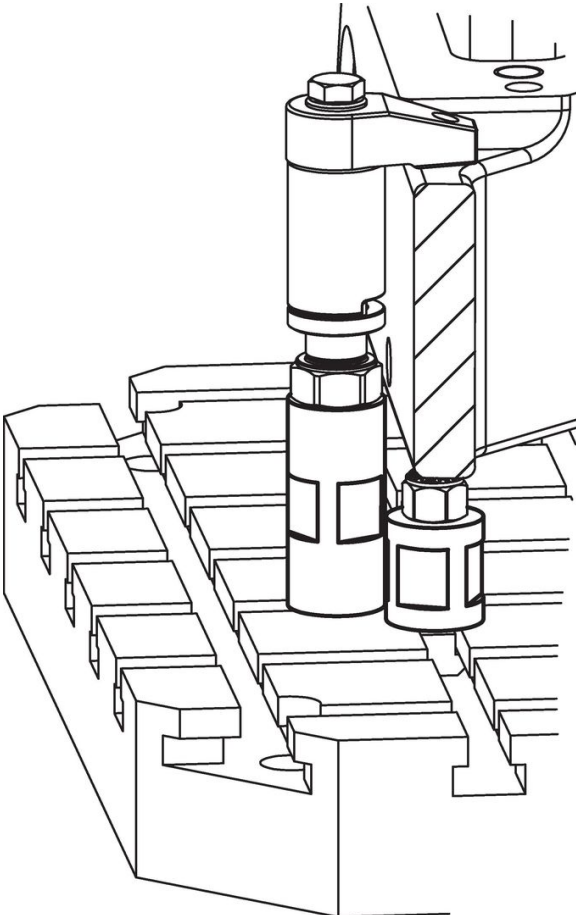
Drawing



Order information

Dimensions				WS		Art. No.
d_1 -0.1	l_1 ± 0.01	d_2	l_2	[mm]	[g]	
picture 1						
40	140	M12	20	36	1366	23310.0142

Application example



Compliance

RoHS compliant

Compliant according to Directive 2011/65/EU and Directive 2015/863.

Does not contain SVHC substances

No SVHC substances with more than 0.1% w/w contained - SVHC list [REACH] as of 27.06.2024.

Does not contain Proposition 65 substances

No Proposition 65 substances included.

<https://www.P65Warnings.ca.gov/>

Free from Conflict Minerals

This product does not contain any substances designated as "conflict minerals" such as tantalum, tin, gold or tungsten from the Democratic Republic of Congo or adjacent countries.