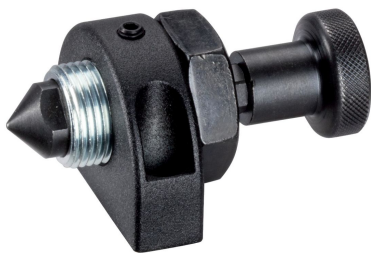


## Push Plungers · with pin, protected against rotating

23230.0530



### Product Description

The push plunger is suitable for easy and safe positioning of workpieces or components at stops and support points prior to clamping or assembly.  
Locating pins of your own profile or design can be attached to our threaded pin types.

### Material

#### Pin

- Steel, case-hardened, blackened

#### Body

- Steel, zinc-plated by galvanization

#### Grub Screw

- Steel, blackened, with brass pad

#### Mounting block

- Zinc die-cast, plastic coated, black

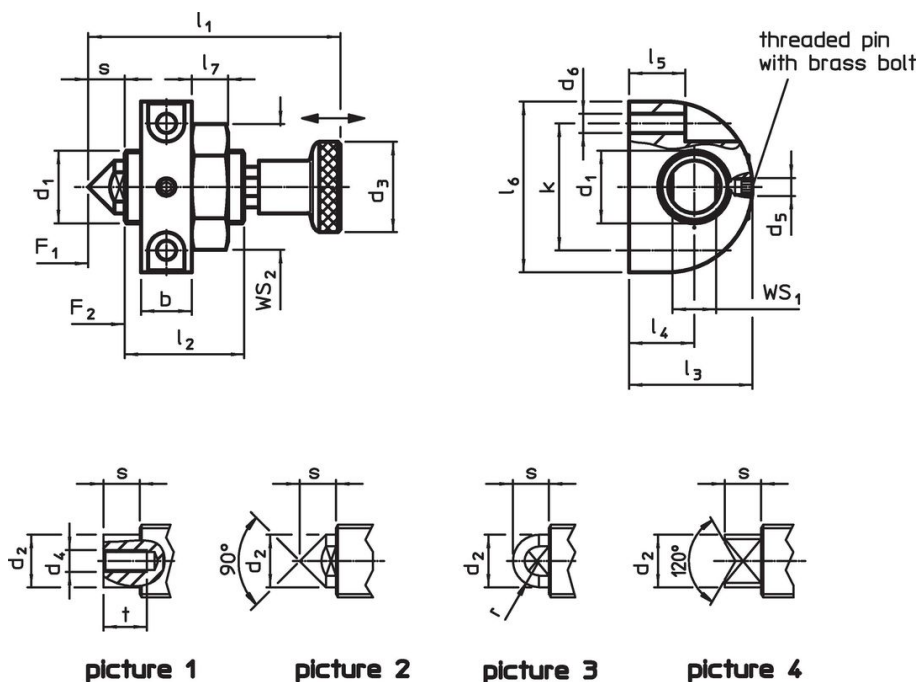
#### Knob

- Steel, blackened

#### Lock nut

- Steel, blackened

### Drawing

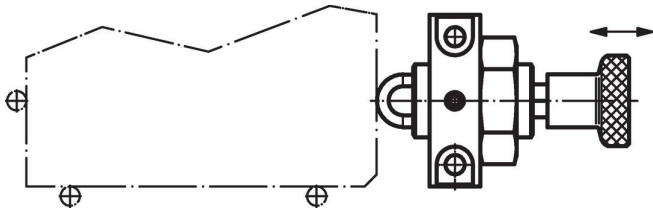


### Order information

| Dimensions                           |                |                |                |                |                |                |                |                |                |                |                |    |    | Stroke | WS              |                 | Spring load <sup>1)</sup> |                | max. |     | Art. No.   |
|--------------------------------------|----------------|----------------|----------------|----------------|----------------|----------------|----------------|----------------|----------------|----------------|----------------|----|----|--------|-----------------|-----------------|---------------------------|----------------|------|-----|------------|
| d <sub>1</sub>                       | d <sub>2</sub> | d <sub>3</sub> | d <sub>5</sub> | d <sub>6</sub> | l <sub>1</sub> | l <sub>2</sub> | l <sub>3</sub> | l <sub>4</sub> | l <sub>5</sub> | l <sub>6</sub> | l <sub>7</sub> | b  | k  | s      | WS <sub>1</sub> | WS <sub>2</sub> | F <sub>1</sub>            | F <sub>2</sub> | [°C] | [g] |            |
| [mm]                                 |                |                |                |                |                |                |                |                |                |                |                |    |    | [mm]   | [mm]            |                 | [N]                       |                |      |     |            |
| <b>with tipped point – picture 2</b> |                |                |                |                |                |                |                |                |                |                |                |    |    |        |                 |                 |                           |                |      |     |            |
| M12 x 1,5                            | 9              | 21             | M4             | 4.3            | 46             | 19             | 26             | 14             | 11.5           | 35             | 6              | 12 | 25 | 6      | 8               | 19              | 16                        | 35             | 100  | 85  | 23230.0530 |

<sup>1)</sup> statistical average value

### Application example



### Compliance

#### RoHS compliant

Contains lead - compliant according to exceptions 6a / 6b / 6c.

#### Contains SVHC substances >0,1% w/w

Contains lead - SVHC list [REACH] as of 23.01.2024.

#### Contains Proposition 65 substances



Lead can cause cancer and reproductive harm from exposure  
<https://www.P65Warnings.ca.gov/>

#### Free from Conflict Minerals

This product does not contain any substances designated as "conflict minerals" such as tantalum, tin, gold or tungsten from the Democratic Republic of Congo or adjacent countries.