

Casquillos de Centraje • sin cuello, DIN 179 A EH 23112.



Descripción del Producto

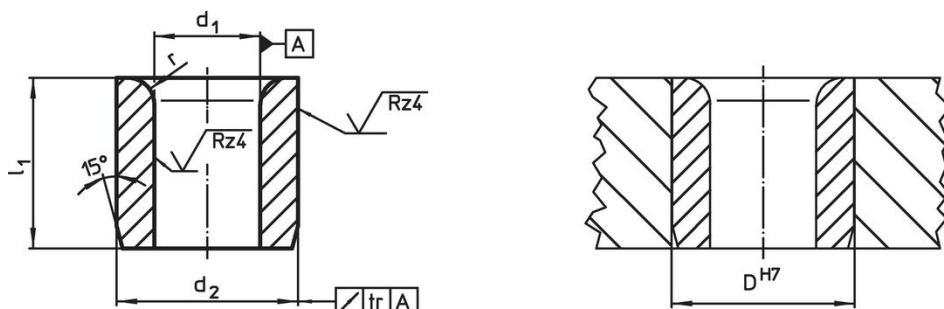
Los casquillos de posicionamiento o perforación se utilizan para taladrar agujeros repetitivos en la misma posición.

Los casquillos de centraje templados se pueden utilizar como guías de gran resistencia para taladros, ejes, etc..

Material


- Acero cementado, templado


Dibujo



Información para el pedido

Dimensiones				Alojamiento		[g]	Referencia
d ₁ F7	l ₁ [mm]	d ₂ n6	r	D H7 [mm]			
2,0	6	5	1,0	5	0,7	23112.0520	
2,0	9	5	1,0	5	1,1	23112.0521	
2,1	6	5	1,0	5	0,7	23112.0522	
2,1	9	5	1,0	5	1,1	23112.0523	
2,5	6	5	1,0	5	0,7	23112.0524	
2,5	9	5	1,0	5	1,0	23112.0525	
3,0	8	6	1,0	6	1,9	23112.0530	
3,0	12	6	1,0	6	1,9	23112.0531	
3,0	16	6	1,0	6	2,6	23112.0532	
3,1	8	6	1,0	6	1,2	23112.0533	
3,1	12	6	1,0	6	1,9	23112.0534	
3,1	16	6	1,0	6	3,2	23112.0535	
3,5	8	7	1,0	7	2,4	23112.0536	
3,5	12	7	1,0	7	2,6	23112.0537	
3,5	16	7	1,0	7	3,6	23112.0538	
4,0	8	7	1,0	7	1,5	23112.0540	
4,0	12	7	1,0	7	3,0	23112.0541	
4,0	16	7	1,0	7	3,2	23112.0542	
4,1	8	8	1,0	8	2,2	23112.0543	
4,1	12	8	1,0	8	3,4	23112.0544	
4,1	16	8	1,0	8	4,6	23112.0545	
4,5	8	8	1,0	8	2,1	23112.0546	
4,5	12	8	1,0	8	3,1	23112.0547	
4,5	16	8	1,0	8	4,2	23112.0548	
5,0	8	8	1,0	8	1,8	23112.0550	
5,0	12	8	1,0	8	3,4	23112.0551	
5,0	16	8	1,0	8	3,7	23112.0552	
5,1	10	10	1,5	10	4,4	23112.0553	
5,1	16	10	1,5	10	7,1	23112.0554	
5,1	20	10	1,5	10	8,9	23112.0555	
5,5	10	10	1,5	10	4,1	23112.0556	

d ₁ F7	Dimensiones			r	Alojamiento D H7 [mm]	 [g]	Referencia
	l ₁ [mm]	d ₂ n6 [mm]					
5,5	16	10	1,5	10	6,7	23112.0557	
5,5	20	10	1,5	10	8,4	23112.0558	
6,0	10	10	1,5	10	3,8	23112.0560	
6,0	16	10	1,5	10	6,1	23112.0561	
6,0	20	10	1,5	10	7,7	23112.0562	
6,1	10	12	1,5	12	6,3	23112.0563	
6,1	16	12	1,5	12	10,0	23112.0564	
6,1	20	12	1,5	12	13,0	23112.0565	
6,5	10	12	1,5	12	6,0	23112.0566	
6,5	16	12	1,5	12	9,7	23112.0567	
6,5	20	12	1,5	12	12,0	23112.0568	
7,0	10	12	1,5	12	5,6	23112.0570	
7,0	16	12	1,5	12	9,1	23112.0571	
7,0	20	12	1,5	12	11,0	23112.0572	
7,1	10	12	1,5	12	5,5	23112.0573	
7,1	16	12	1,5	12	9,0	23112.0574	
7,1	20	12	1,5	12	11,0	23112.0575	
7,5	10	12	1,5	12	5,1	23112.0576	
7,5	16	12	1,5	12	8,4	23112.0577	
7,5	20	12	1,5	12	11,0	23112.0578	
8,0	10	12	1,5	12	4,7	23112.0580	
8,0	16	12	1,5	12	7,6	23112.0581	
8,0	20	12	1,5	12	9,6	23112.0582	
8,1	12	15	2,0	15	11,0	23112.0583	
8,1	20	15	2,0	15	19,0	23112.0584	
8,1	25	15	2,0	15	24,0	23112.0585	
8,5	12	15	2,0	15	11,0	23112.0586	
8,5	20	15	2,0	15	18,0	23112.0587	
8,5	25	15	2,0	15	23,0	23112.0588	
9,0	12	15	2,0	15	10,0	23112.0590	
9,0	20	15	2,0	15	17,0	23112.0591	
9,0	25	15	2,0	15	22,0	23112.0592	
9,1	12	15	2,0	15	10,0	23112.0593	
9,1	20	15	2,0	15	17,0	23112.0594	
9,1	25	15	2,0	15	21,0	23112.0595	
9,5	12	15	2,0	15	9,5	23112.0596	
9,5	20	15	2,0	15	16,0	23112.0597	
9,5	25	15	2,0	15	20,0	23112.0598	
10,0	12	15	2,0	15	8,8	23112.0600	
10,0	20	15	2,0	15	15,0	23112.0601	
10,0	25	15	2,0	15	19,0	23112.0602	
10,1	12	18	2,0	18	16,0	23112.0603	
10,1	20	18	2,0	18	27,0	23112.0604	
10,1	25	18	2,0	18	33,0	23112.0605	
10,5	12	18	2,0	18	15,0	23112.0606	
10,5	20	18	2,0	18	26,0	23112.0607	
10,5	25	18	2,0	18	32,0	23112.0608	
11,0	12	18	2,0	18	14,0	23112.0610	
11,0	20	18	2,0	18	24,0	23112.0611	
11,0	25	18	2,0	18	31,0	23112.0612	
11,1	12	18	2,0	18	14,0	23112.0613	
11,1	20	18	2,0	18	24,0	23112.0614	
11,1	25	18	2,0	18	30,0	23112.0615	
11,5	12	18	2,0	18	13,0	23112.0616	
11,5	20	18	2,0	18	23,0	23112.0617	
11,5	25	18	2,0	18	29,0	23112.0618	
12,0	12	18	2,0	18	13,0	23112.0620	
12,0	20	18	2,0	18	22,0	23112.0621	
12,0	25	18	2,0	18	27,0	23112.0622	
12,1	16	22	2,0	22	32,0	23112.0623	
12,1	28	22	2,0	22	57,0	23112.0624	

d ₁ F7	Dimensiones			r	Alojamiento D H7 [mm]	 [g]	Referencia
	l ₁ [mm]	d ₂ n6					
12,1	36	22		2,0	22	74,0	23112.0625
12,5	16	22		2,0	22	31,0	23112.0626
12,5	28	22		2,0	22	66,0	23112.0627
12,5	36	22		2,0	22	69,0	23112.0628
13,0	16	22		2,0	22	30,0	23112.0630
13,0	28	22		2,0	22	53,0	23112.0631
13,0	36	22		2,0	22	69,0	23112.0632
14,0	16	22		2,0	22	27,0	23112.0640
14,0	28	22		2,0	22	49,0	23112.0641
14,0	36	22		2,0	22	63,0	23112.0642
15,0	16	22		2,0	22	24,0	23112.0650
15,0	28	22		2,0	22	44,0	23112.0651
15,0	36	22		2,0	22	56,0	23112.0652
16,0	16	26		2,0	26	45,0	23112.0660
16,0	28	26		2,0	26	71,0	23112.0661
16,0	36	26		2,0	26	92,0	23112.0662
16,1	16	26		2,0	26	40,0	23112.0663
16,1	28	26		2,0	26	71,0	23112.0664
16,1	36	26		2,0	26	91,0	23112.0665
16,5	16	26		2,0	26	39,0	23112.0666
16,5	28	26		2,0	26	68,0	23112.0667
16,5	36	26		2,0	26	88,0	23112.0668
17,0	16	26		2,0	26	37,0	23112.0671
17,0	28	26		2,0	26	65,0	23112.0672
17,0	36	26		2,0	26	84,0	23112.0673
18,0	16	26		2,0	26	33,0	23112.0681
18,0	28	26		2,0	26	59,0	23112.0682
18,0	36	26		2,0	26	76,0	23112.0683
19,0	20	30		3,0	30	64,0	23112.0691
19,0	36	30		3,0	30	117,0	23112.0692
19,0	45	30		3,0	30	147,0	23112.0693
20,0	20	30		3,0	30	59,0	23112.0701
20,0	36	30		3,0	30	108,0	23112.0702
20,0	45	30		3,0	30	136,0	23112.0703
20,1	20	30		3,0	30	59,0	23112.0704
20,1	36	30		3,0	30	108,0	23112.0705
20,1	45	30		3,0	30	135,0	23112.0706
22,0	20	30		3,0	30	49,0	23112.0721
22,0	36	30		3,0	30	90,0	23112.0722
22,0	45	30		3,0	30	113,0	23112.0723
25,0	20	35		3,0	35	71,0	23112.0751
25,0	36	35		3,0	35	130,0	23112.0752
25,0	45	35		3,0	35	163,0	23112.0753
30,0	25	42		3,0	42	129,0	23112.0801
30,0	45	42		3,0	42	235,0	23112.0802
30,0	56	42		3,0	42	293,0	23112.0803

Cumplimiento

Cumple con RoHS

Contiene plomo - cumple con las excepciones 6a / 6b / 6c.

Contiene sustancias SVHC > 0,1% p / p

Contiene plomo - Lista SVHC [REACH] desde 27.06.2024.

Contiene sustancias de la Proposición 65



El plomo puede causar cáncer y daño reproductivo debido a la exposición
<https://www.P65Warnings.ca.gov/>

Libre de Materiales Conflictivos

Este producto no contiene ninguna sustancia designada como "minerales en conflicto" como tantalio, estaño, oro o tungsteno de la República Democrática del Congo o países adyacentes.