

## Soportes Ajustables

EH 22730.



### Descripción del Producto

Los soportes ajustables se utilizan como topes, soportes, apoyos y son adecuados para el montaje en elementos de sujeción.

### Material

#### Bola

- Acero para rodamiento, templado, brillante
- Acero inoxidable 1.3541, niquelado

#### Cuerpo

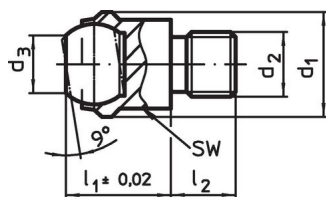
- Acero termotratado, templado, fosfatado
- Acero inoxidable 1.4057, termotratado

### Más información

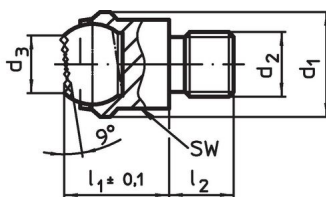
#### Notas

Bola bloqueada para impedir su giro.  
Datos de carga válidos para diseños en acero y acero inoxidable.

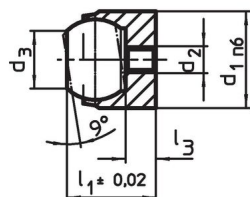
### Dibujo



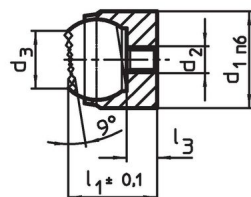
croquis 1



croquis 2



croquis 3



croquis 4

### Información para el pedido

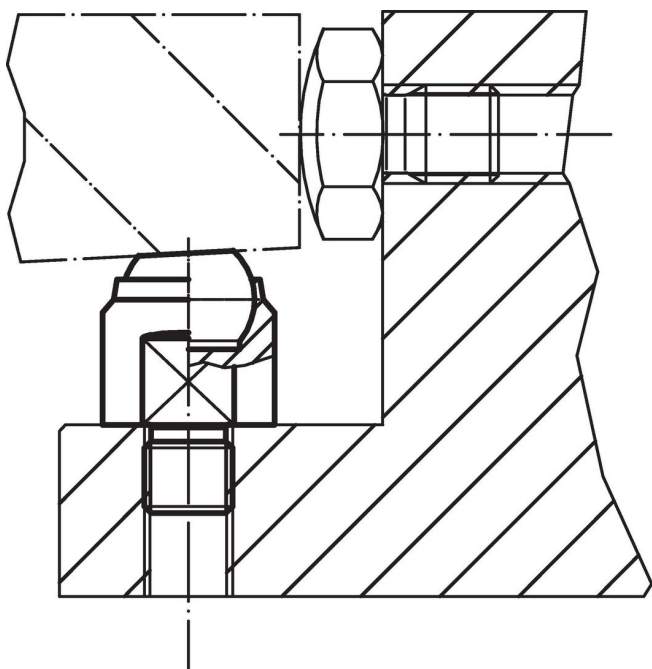
| d <sub>1</sub>   | d <sub>2</sub> | d <sub>3</sub> | Dimensiones    |                        |                        | Diámetro de la bola | Alojamiento |                       | SW | Capacidad de carga estática máx. [kN] | Par de torsión inicial máx. [Nm] | [g]   | Referencia                 |
|--|----------------|----------------|----------------|------------------------|------------------------|---------------------|-------------|-----------------------|----|---------------------------------------|----------------------------------|-------|----------------------------|
|  |                |                | l <sub>1</sub> | l <sub>2</sub><br>-0,5 | l <sub>3</sub><br>máx. |                     | Ø H7        | Profundidad mín. [mm] |    |                                       |                                  |       |                            |
| [mm]   |                |                |                |                        |                        |                     |             |                       |    |                                       |                                  |       |                            |
| <b>con rosca macho, bola truncada, superficie de apoyo plana – croquis 1, Acero termotratado</b> |                |                |                |                        |                        |                     |             |                       |    |                                       |                                  |       |                            |
| 13   | M 6            | 7,2            | 13             | 8                      | –                      | 10                  | –           | –                     | 11 | 10                                    | 10,0                             | 12,0  | <a href="#">22730.0012</a> |
| 13   | M 8            | 7,2            | 13             | 8                      | –                      | 10                  | –           | –                     | 11 | 10                                    | 25,0                             | 13,0  | <a href="#">22730.0013</a> |
| 20   | M 8            | 10,5           | 18             | 10                     | –                      | 16                  | –           | –                     | 17 | 25                                    | 25,0                             | 39,0  | <a href="#">22730.0018</a> |
| 20   | M10            | 10,5           | 18             | 10                     | –                      | 16                  | –           | –                     | 17 | 25                                    | 46,0                             | 40,0  | <a href="#">22730.0019</a> |
| 20   | M12            | 10,5           | 18             | 12                     | –                      | 16                  | –           | –                     | 17 | 25                                    | 82,0                             | 43,0  | <a href="#">22730.0020</a> |
| 30   | M16            | 20,0           | 27             | 16                     | –                      | 25                  | –           | –                     | 27 | 90                                    | 206,0                            | 151,0 | <a href="#">22730.0030</a> |
| 50   | M20            | 34,5           | 35             | 20                     | –                      | 40                  | –           | –                     | 41 | 165                                   | 407,0                            | 489,0 | <a href="#">22730.0050</a> |
| 50   | M24            | 34,5           | 35             | 24                     | –                      | 40                  | –           | –                     | 41 | 165                                   | 698,0                            | 518,0 | <a href="#">22730.0060</a> |
| <b>con rosca macho, bola truncada, superficie de apoyo plana – croquis 1, Acero inoxidable</b>   |                |                |                |                        |                        |                     |             |                       |    |                                       |                                  |       |                            |
| 13   | M 6            | 7,2            | 13             | 8                      | –                      | 10                  | –           | –                     | 11 | 10                                    | 10,0                             | 12,0  | <a href="#">22730.0112</a> |
| 13   | M 8            | 7,2            | 13             | 8                      | –                      | 10                  | –           | –                     | 11 | 10                                    | 25,0                             | 13,0  | <a href="#">22730.0113</a> |
| 20   | M 8            | 10,5           | 18             | 10                     | –                      | 16                  | –           | –                     | 17 | 25                                    | 25,0                             | 39,0  | <a href="#">22730.0118</a> |
| 20   | M10            | 10,5           | 18             | 10                     | –                      | 16                  | –           | –                     | 17 | 25                                    | 46,0                             | 40,0  | <a href="#">22730.0119</a> |
| 20   | M12            | 10,5           | 18             | 12                     | –                      | 16                  | –           | –                     | 17 | 25                                    | 82,0                             | 43,0  | <a href="#">22730.0120</a> |
| 30   | M16            | 20,0           | 27             | 16                     | –                      | 25                  | –           | –                     | 27 | 90                                    | 206,0                            | 151,0 | <a href="#">22730.0130</a> |
| 50   | M20            | 34,5           | 35             | 20                     | –                      | 40                  | –           | –                     | 41 | 165                                   | 407,0                            | 489,0 | <a href="#">22730.0150</a> |
| 50   | M24            | 34,5           | 35             | 24                     | –                      | 40                  | –           | –                     | 41 | 165                                   | 698,0                            | 518,0 | <a href="#">22730.0160</a> |

<sup>1)</sup> Sólo válido si se respeta la profundidad mínima del alojamiento.

| d <sub>1</sub>   | d <sub>2</sub> | Dimensiones    |                |                        |                        | Diámetro de la bola | Alojamiento |                  | SW | Capacidad de carga estática máx. | Par de torsión inicial máx. | [g]   | Referencia                 |
|--|----------------|----------------|----------------|------------------------|------------------------|---------------------|-------------|------------------|----|----------------------------------|-----------------------------|-------|----------------------------|
|  |                | d <sub>3</sub> | l <sub>1</sub> | l <sub>2</sub><br>-0,5 | l <sub>3</sub><br>máx. |                     | Ø<br>H7     | Profundidad mín. |    |                                  |                             |       |                            |
| [mm]   |                |                |                |                        |                        |                     |             |                  |    |                                  |                             |       |                            |
| <b>con rosca macho, bola truncada, superficie de apoyo estriada – croquis 2, Acero termotratado</b>                        |                |                |                |                        |                        |                     |             |                  |    |                                  |                             |       |                            |
| 13   | M 6            | 7,2            | 13             | 8                      | –                      | 10                  | –           | –                | 11 | 10                               | 10,0                        | 12,0  | <a href="#">22730.0312</a> |
| 13   | M 8            | 7,2            | 13             | 8                      | –                      | 10                  | –           | –                | 11 | 10                               | 25,0                        | 13,0  | <a href="#">22730.0313</a> |
| 20   | M 8            | 10,5           | 18             | 10                     | –                      | 16                  | –           | –                | 17 | 25                               | 25,0                        | 38,0  | <a href="#">22730.0318</a> |
| 20   | M10            | 10,5           | 18             | 10                     | –                      | 16                  | –           | –                | 17 | 25                               | 46,0                        | 40,0  | <a href="#">22730.0319</a> |
| 20   | M12            | 10,5           | 18             | 12                     | –                      | 16                  | –           | –                | 17 | 25                               | 82,0                        | 43,0  | <a href="#">22730.0320</a> |
| 30   | M16            | 20,0           | 27             | 16                     | –                      | 25                  | –           | –                | 27 | 90                               | 206,0                       | 149,0 | <a href="#">22730.0330</a> |
| 50   | M20            | 34,5           | 35             | 20                     | –                      | 40                  | –           | –                | 41 | 165                              | 407,0                       | 484,0 | <a href="#">22730.0350</a> |
| 50   | M24            | 34,5           | 35             | 24                     | –                      | 40                  | –           | –                | 41 | 165                              | 698,0                       | 513,0 | <a href="#">22730.0360</a> |
| <b>para orificio de posicionamiento, bola truncada plana, superficie de apoyo lisa – croquis 3, Acero termotratado</b>     |                |                |                |                        |                        |                     |             |                  |    |                                  |                             |       |                            |
| 12 n6  | M 3            | 7,2            | 11             | –                      | 3,2                    | 10                  | 12          | 6                | –  | 10 <sup>1)</sup>                 | 1,3                         | 8,0   | <a href="#">22730.0412</a> |
| 18 n6  | M 4            | 10,5           | 17             | –                      | 4,0                    | 16                  | 18          | 8                | –  | 25 <sup>1)</sup>                 | 2,9                         | 29,0  | <a href="#">22730.0418</a> |
| 28 n6  | M 5            | 20,0           | 25             | –                      | 5,5                    | 25                  | 28          | 13               | –  | 90 <sup>1)</sup>                 | 6,0                         | 109,0 | <a href="#">22730.0428</a> |
| <b>para orificio de posicionamiento, bola truncada plana, superficie de apoyo lisa – croquis 3, Acero inoxidable</b>       |                |                |                |                        |                        |                     |             |                  |    |                                  |                             |       |                            |
| 12 n6  | M 3            | 7,2            | 11             | –                      | 3,2                    | 10                  | 12          | 6                | –  | 10 <sup>1)</sup>                 | 1,3                         | 8,0   | <a href="#">22730.0452</a> |
| 18 n6  | M 4            | 10,5           | 17             | –                      | 4,0                    | 16                  | 18          | 8                | –  | 25 <sup>1)</sup>                 | 2,9                         | 29,0  | <a href="#">22730.0458</a> |
| 28 n6  | M 5            | 20,0           | 25             | –                      | 5,5                    | 25                  | 28          | 13               | –  | 90 <sup>1)</sup>                 | 6,0                         | 109,0 | <a href="#">22730.0468</a> |
| <b>para orificio de posicionamiento, bola truncada plana, superficie de apoyo estriada – croquis 4, Acero termotratado</b> |                |                |                |                        |                        |                     |             |                  |    |                                  |                             |       |                            |
| 12 n6  | M 3            | 7,2            | 11             | –                      | 3,2                    | 10                  | 12          | 6                | –  | 10 <sup>1)</sup>                 | 1,3                         | 7,9   | <a href="#">22730.0712</a> |
| 18 n6  | M 4            | 10,5           | 17             | –                      | 4,0                    | 16                  | 18          | 8                | –  | 25 <sup>1)</sup>                 | 2,9                         | 29,0  | <a href="#">22730.0718</a> |
| 28 n6  | M 5            | 20,0           | 25             | –                      | 5,5                    | 25                  | 28          | 13               | –  | 90 <sup>1)</sup>                 | 6,0                         | 108,0 | <a href="#">22730.0728</a> |

<sup>1)</sup> Sólo válido si se respeta la profundidad mínima del alojamiento.

### Ejemplo de aplicación



## Cumplimiento

### Cumple con RoHS

Cumple con la Directiva 2011/65/UE y la Directiva 2015/863.

### No contiene sustancias SVHC

Ninguna sustancia SVHC con más del 0,1% p/p contenida - Lista SVHC [REACH] desde 27.06.2024.

### No contiene sustancias de la Proposición 65

No se incluyen sustancias de la Propuesta 65.

<https://www.P65Warnings.ca.gov/>

### Libre de Materiales Conflictivos

Este producto no contiene ninguna sustancia designada como "minerales en conflicto" como tantalio, estaño, oro o tungsteno de la República Democrática del Congo o países adyacentes.