

Height Adjusting Cylinders

23310.0134



Product Description

The height adjusting cylinders can be used to extend the clamping height of down-thrust clamps EH 23310. They are also used in combination with seating pins (EH 22680.), pins (EH 22690.) and self-aligning pads (EH 22730. - EH 22741.).

Material

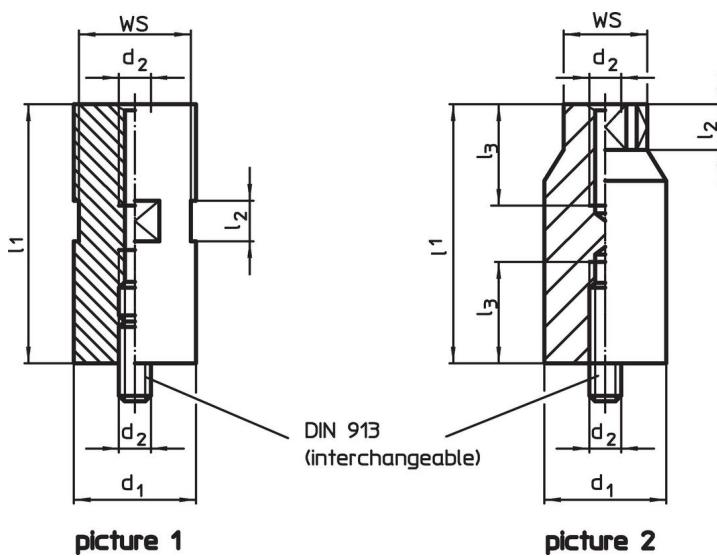
- Steel, case-hardened, blackened, ground

More information


Further products

- Seating Pins, ribbed or pointed
- Seating Pins, pin shape
- Pins
- Seating Pins, adjustable
- Self-Aligning Pads
- Self-Aligning Pads, with hard metal ball, ribbed
- Self-Aligning Pads, self-resetting
- Self-Aligning Pads, with hard metal ball, ribbed and self-resetting
- Self-Aligning Pads, adjustable
- Self-Aligning Pads, adjustable, self-resetting

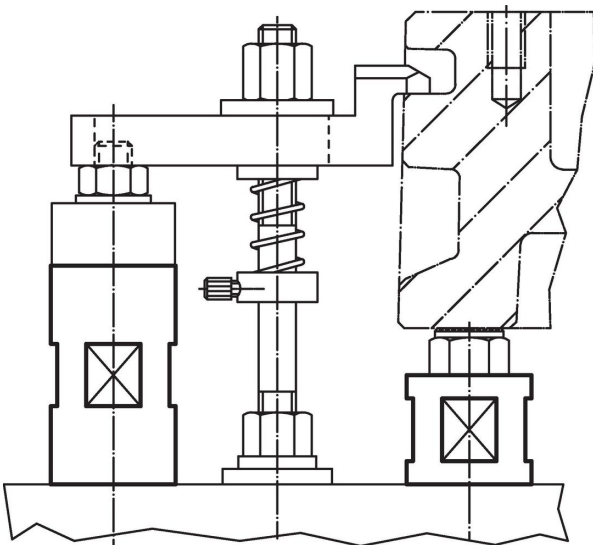
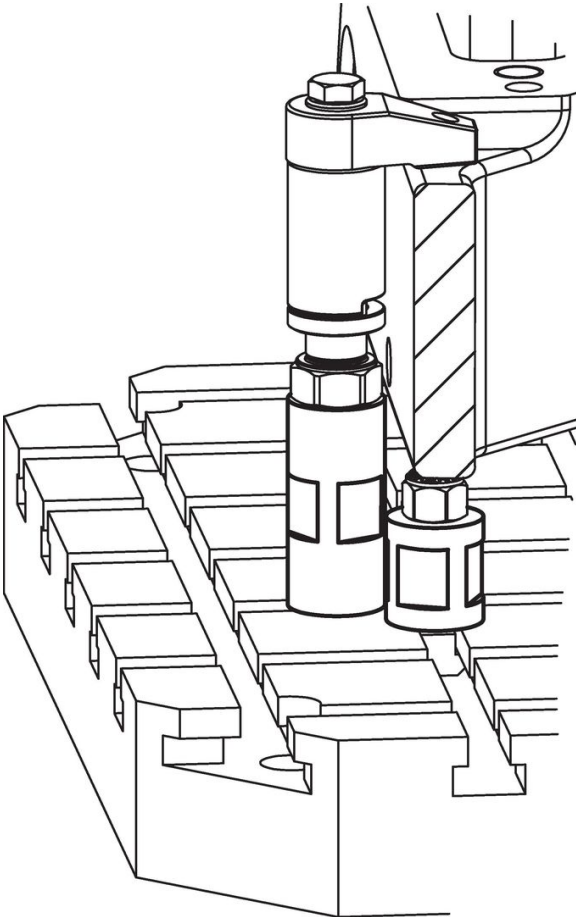
Drawing



Order information

Dimensions				WS		Art. No.
d_1	l_1	d_2	l_2	[mm]	[g]	
-0.1	± 0.01					
[mm]						
picture 1						
32	140	M10	20	27	848	23310.0134

Application example



Compliance

RoHS compliant

Contains lead - compliant according to exceptions 6a / 6b / 6c.

Contains SVHC substances >0,1% w/w

Contains lead - SVHC list [REACH] as of 27.06.2024.

Contains Proposition 65 substances



Lead can cause cancer and reproductive harm from exposure
<https://www.P65Warnings.ca.gov/>

Free from Conflict Minerals

This product does not contain any substances designated as "conflict minerals" such as tantalum, tin, gold or tungsten from the Democratic Republic of Congo or adjacent countries.