

Palm Grips • DIN 6335 stainless steel, die-cast
24631.0350



Product Description

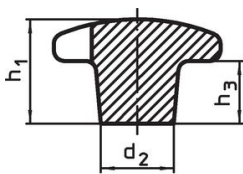
These palm grips are manufactured according to DIN 6335.

Material

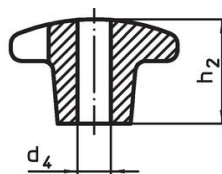
Handle

- Stainless steel A2, dull blasted

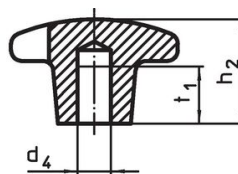
Drawing



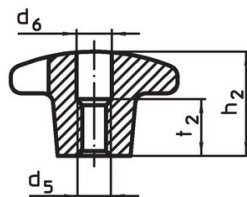
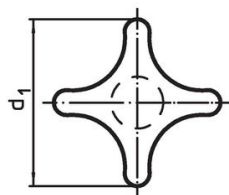
picture 1



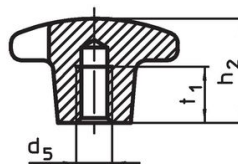
picture 2



picture 3



picture 4

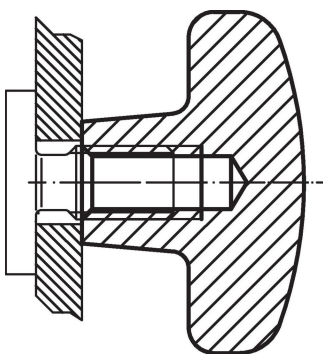


picture 5

Order information

Dimensions							[g]	Art. No.
d ₁	d ₂	d ₅	d ₆	h ₂	t ₂	[mm]		
with thread, drilled out, form D – picture 4								
50	18	M10	10.5	32	16		100	24631.0350

Application example



Compliance

RoHS compliant

Compliant according to Directive 2011/65/EU and Directive 2015/863.

Does not contain SVHC substances

No SVHC substances with more than 0.1% w/w contained - SVHC list [REACH] as of 27.06.2024.

Does not contain Proposition 65 substances

No Proposition 65 substances included.

<https://www.P65Warnings.ca.gov/>

Free from Conflict Minerals

This product does not contain any substances designated as "conflict minerals" such as tantalum, tin, gold or tungsten from the Democratic Republic of Congo or adjacent countries.