

## Tubular Handles

24321.0015



### Product Description

Tubular handles are used, for example, on machine doors. These tubular handles made of aluminium are characterised by their ergonomic and robust construction and modern design. This version is equipped with angled handle legs (legs).

#### Material

##### Handle

- Aluminium, anodised

##### Handle shank

- Zinc die-cast, plastic coated, silver, similar to RAL 9006, matt structure

##### Cap

- Plastic, light grey

#### Assembly

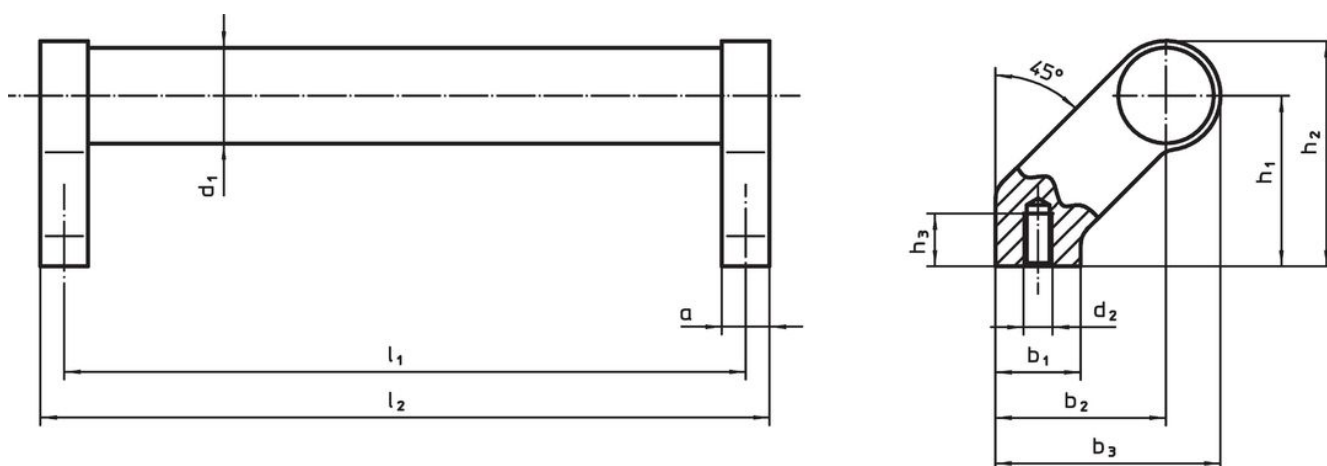
Back mount handle.

#### More information

#### Notes

Customized design on request.

### Drawing



### Order information

Dimensions											[g]	Art. No.
$d_1$	$l_1$ $\pm 0.25$	$a$	$b_1$	$b_2$	$b_3$	$d_2$	$h_1$	$h_2$	$h_3$ min.	$l_2$		
silver												
20	250	12	24	42	54	M6	42	54	12	262	265	24321.0015

### Compliance

#### RoHS compliant

Contains lead - compliant according to exceptions 6a / 6b / 6c.

#### Contains SVHC substances >0,1% w/w

Contains lead - SVHC list [REACH] as of 27.06.2024.

#### Contains Proposition 65 substances



Lead can cause cancer and reproductive harm from exposure  
<https://www.P65Warnings.ca.gov/>

#### Free from Conflict Minerals

This product does not contain any substances designated as "conflict minerals" such as tantalum, tin, gold or tungsten from the Democratic Republic of Congo or adjacent countries.