

Pins

22690.0021



Product Description

To be used as seats, stops and thrust pads.

Material

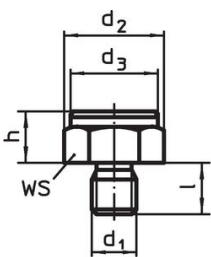
- Steel, case-hardened, blackened

More information

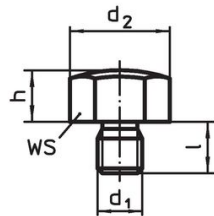
Further products

- Seating Pins, ribbed or pointed
- Pins, with plastic bearing surface

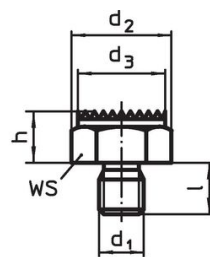
Drawing



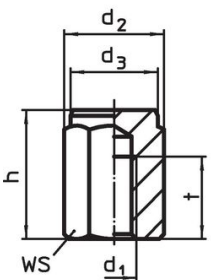
picture 1



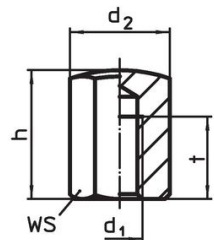
picture 2



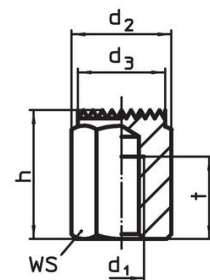
picture 3



picture 4




picture 5

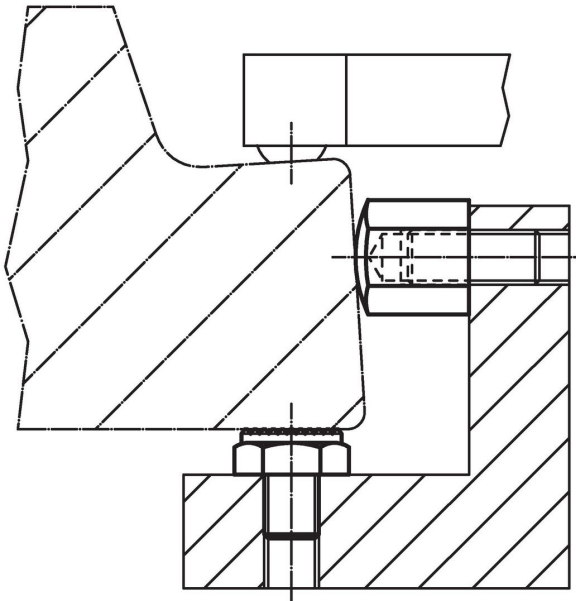


picture 6

Order information

h ±0.01	d ₁	Dimensions d ₂ d ₃ l [mm]			WS [mm]	Tightening torque max. [Nm]	 [g]	Art. No.
with male thread, bearing surface plain – picture 1								
10	M8	19.4	17	10	17	18	21	22690.0021

Application example



Compliance

RoHS compliant

Contains lead - compliant according to exceptions 6a / 6b / 6c.

Contains SVHC substances >0,1% w/w

Contains lead - SVHC list [REACH] as of 23.01.2024.

Contains Proposition 65 substances



Lead can cause cancer and reproductive harm from exposure
<https://www.P65Warnings.ca.gov/>

Free from Conflict Minerals

This product does not contain any substances designated as "conflict minerals" such as tantalum, tin, gold or tungsten from the Democratic Republic of Congo or adjacent countries.