

Seating Pins • partially DIN 6321 (old standard)

22630.0132



Product Description

Seating pins according to DIN 6321 (old standard) can be used as supports for workpieces but also as stops and feet.
The bearing surface has no centre.

Material

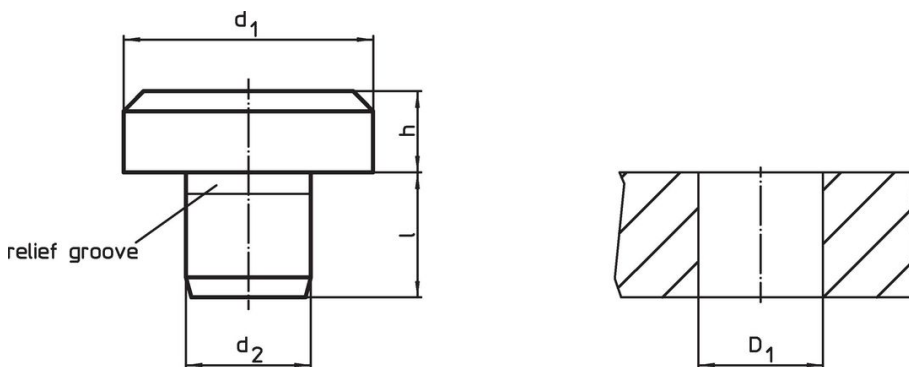
- Tool steel, hardened, ground

More information

Further products

- Seating Pins, DIN 6321

Drawing



Order information

d ₁	Dimensions			l	Location hole D ₁ H7 [mm]	[g]	Art. No.
	h h9 [mm]	d ₂ n6 [mm]					
intermediate sizes							
20	12	10		12	10	36	22630.0132

Application example



Compliance

RoHS compliant

Compliant according to Directive 2011/65/EU and Directive 2015/863.

Does not contain SVHC substances

No SVHC substances with more than 0.1% w/w contained - SVHC list [REACH] as of 27.06.2024.

Does not contain Proposition 65 substances

No Proposition 65 substances included.

<https://www.P65Warnings.ca.gov/>

Free from Conflict Minerals

This product does not contain any substances designated as "conflict minerals" such as tantalum, tin, gold or tungsten from the Democratic Republic of Congo or adjacent countries.