

Šrouby rýhované vysoké • DIN 464

EH 24790.



Popis produktu

Šrouby rýhované vysoké jsou vyrobeny z jednoho kusu. Oproti normě jsou vyrobeny se závitem až k hlavě bez výběhu závitu.

Materiál

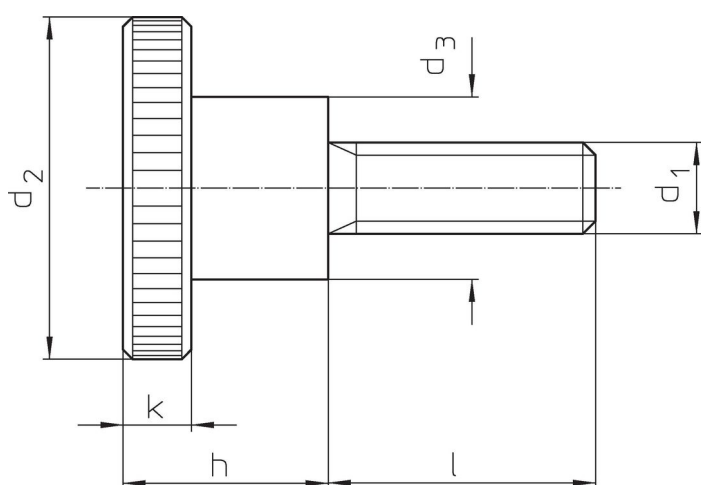
- Ocel, bryněvaná, pevnost 5.8
- Ocel, zinkovaná, pevnost 5.8
- Nerez 1.4305, matná

Další informace

Poznámky


Rýhování a jeho hloubka se mohou lišit od normy DIN.

Výkres s rozměry



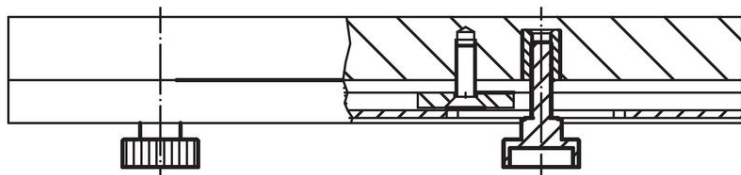
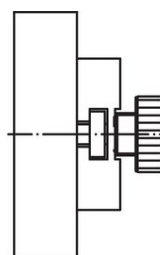
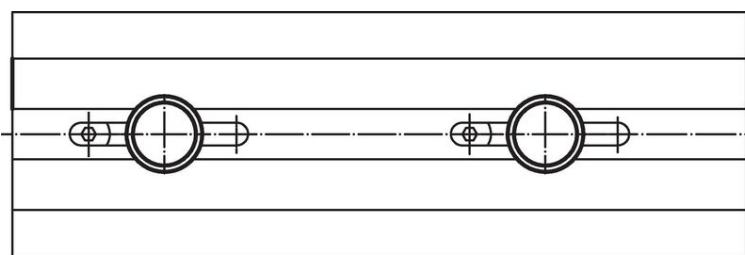
Informace pro objednání

d ₁	l	d ₂	Rozměry		h	k	[g]	Obj. č.
			d ₃	[mm]				
Ocel, bryněvaná, pevnost 5.8								
M 3	6	12	6		7,5	2,5	3,7	24790.0074
M 3	10	12	6		7,5	2,5	3,8	24790.0076
M 3	12	12	6		7,5	2,5	4,0	24790.0077
M 3	16	12	6		7,5	2,5	4,0	24790.0079
M 3	20	12	6		7,5	2,5	4,5	24790.0081
M 4	5	16	8		9,5	3,5	7,7	24790.0092
M 4	8	16	8		9,5	3,5	8,0	24790.0094
M 4	10	16	8		9,5	3,5	8,1	24790.0095
M 4	12	16	8		9,5	3,5	8,6	24790.0096
M 4	16	16	8		9,5	3,5	8,4	24790.0098
M 4	20	16	8		9,5	3,5	9,1	24790.0100
M 4	25	16	8		9,5	3,5	9,0	24790.0102
M 5	6	20	10		11,5	4,0	14,0	24790.0112
M 5	8	20	10		11,5	4,0	15,0	24790.0113
M 5	10	20	10		11,5	4,0	15,0	24790.0114
M 5	12	20	10		11,5	4,0	15,0	24790.0115
M 5	16	20	10		11,5	4,0	16,0	24790.0117
M 5	20	20	10		11,5	4,0	16,0	24790.0119
M 5	25	20	10		11,5	4,0	17,0	24790.0121
M 5	30	20	10		11,5	4,0	17,0	24790.0123
M 6	8	24	12		15,0	5,0	28,0	24790.0132
M 6	10	24	12		15,0	5,0	27,0	24790.0133

d ₁	l	Rozměry			h	k		Obj. č.
		d ₂	d ₃	[mm]				
M 6	12	24	12	15,0	5,0	28,0	24790.0134	
M 6	16	24	12	15,0	5,0	28,0	24790.0136	
M 6	20	24	12	15,0	5,0	29,0	24790.0138	
M 6	25	24	12	15,0	5,0	30,0	24790.0140	
M 6	30	24	12	15,0	5,0	31,0	24790.0142	
M 6	35	24	12	15,0	5,0	31,0	24790.0144	
M 8	12	30	16	18,0	6,0	53,0	24790.0152	
M 8	16	30	16	18,0	6,0	55,0	24790.0154	
M 8	20	30	16	18,0	6,0	56,0	24790.0156	
M 8	25	30	16	18,0	6,0	58,0	24790.0158	
M 8	30	30	16	18,0	6,0	60,0	24790.0160	
M 8	35	30	16	18,0	6,0	62,0	24790.0162	
M 8	40	30	16	18,0	6,0	61,0	24790.0164	
M10	15	36	20	23,0	8,0	104,0	24790.0171	
M10	20	36	20	23,0	8,0	106,0	24790.0173	
M10	25	36	20	23,0	8,0	109,0	24790.0175	
M10	30	36	20	23,0	8,0	112,0	24790.0177	
M10	35	36	20	23,0	8,0	116,0	24790.0179	
M10	40	36	20	23,0	8,0	116,0	24790.0181	
Ocel, zinkovaná								
M 3	6	12	6	7,5	2,5	4,0	24790.0474	
M 3	8	12	6	7,5	2,5	4,0	24790.0475	
M 3	10	12	6	7,5	2,5	4,0	24790.0476	
M 3	12	12	6	7,5	2,5	4,0	24790.0477	
M 3	16	12	6	7,5	2,5	5,0	24790.0479	
M 3	20	12	6	7,5	2,5	5,0	24790.0481	
M 4	5	16	8	9,5	3,5	9,0	24790.0492	
M 4	8	16	8	9,5	3,5	8,0	24790.0494	
M 4	10	16	8	9,5	3,5	8,0	24790.0495	
M 4	12	16	8	9,5	3,5	8,0	24790.0496	
M 4	16	16	8	9,5	3,5	8,0	24790.0498	
M 4	20	16	8	9,5	3,5	9,0	24790.0500	
M 4	25	16	8	9,5	3,5	9,0	24790.0502	
M 5	6	20	10	11,5	4,0	15,0	24790.0512	
M 5	8	20	10	11,5	4,0	15,0	24790.0513	
M 5	10	20	10	11,5	4,0	15,0	24790.0514	
M 5	12	20	10	11,5	4,0	14,0	24790.0515	
M 5	16	20	10	11,5	4,0	15,0	24790.0517	
M 5	20	20	10	11,5	4,0	16,0	24790.0519	
M 5	25	20	10	11,5	4,0	16,0	24790.0521	
M 5	30	20	10	11,5	4,0	17,0	24790.0523	
M 6	8	24	12	15,0	5,0	27,0	24790.0532	
M 6	10	24	12	15,0	5,0	27,0	24790.0533	
M 6	12	24	12	15,0	5,0	27,0	24790.0534	
M 6	16	24	12	15,0	5,0	28,0	24790.0536	
M 6	20	24	12	15,0	5,0	29,0	24790.0538	
M 6	25	24	12	15,0	5,0	28,0	24790.0540	
M 6	30	24	12	15,0	5,0	30,0	24790.0542	
M 6	35	24	12	15,0	5,0	31,0	24790.0544	
M 8	12	30	16	18,0	6,0	55,0	24790.0552	
M 8	16	30	16	18,0	6,0	55,0	24790.0554	
M 8	20	30	16	18,0	6,0	56,0	24790.0556	
M 8	25	30	16	18,0	6,0	58,0	24790.0558	
M 8	30	30	16	18,0	6,0	50,0	24790.0560	
M 8	35	30	16	18,0	6,0	63,0	24790.0562	
M 8	40	30	16	18,0	6,0	62,0	24790.0564	
M10	12	36	20	23,0	8,0	105,0	24790.0570	
M10	15	36	20	23,0	8,0	106,0	24790.0571	
M10	20	36	20	23,0	8,0	107,0	24790.0573	

d ₁	l	Rozměry				h	k	[g]	Obj. č.
		d ₂	d ₃	[mm]					
M10	25	36	20			23,0	8,0	110,0	24790.0575
M10	30	36	20			23,0	8,0	112,0	24790.0577
M10	35	36	20			23,0	8,0	115,0	24790.0579
M10	40	36	20			23,0	8,0	116,0	24790.0581
Nerez 1.4305									
M 3	6	12	6			7,5	2,5	3,7	24790.0274
M 3	10	12	6			7,5	2,5	3,8	24790.0276
M 3	12	12	6			7,5	2,5	4,0	24790.0277
M 3	16	12	6			7,5	2,5	4,0	24790.0279
M 4	8	16	8			9,5	3,5	8,0	24790.0294
M 4	10	16	8			9,5	3,5	8,1	24790.0295
M 4	12	16	8			9,5	3,5	8,6	24790.0296
M 4	16	16	8			9,5	3,5	8,4	24790.0298
M 4	20	16	8			9,5	3,5	9,1	24790.0300
M 4	25	16	8			9,5	3,5	9,0	24790.0302
M 5	10	20	10			11,5	4,0	15,0	24790.0314
M 5	12	20	10			11,5	4,0	15,0	24790.0315
M 5	16	20	10			11,5	4,0	16,0	24790.0317
M 5	20	20	10			11,5	4,0	16,0	24790.0319
M 5	25	20	10			11,5	4,0	17,0	24790.0321
M 5	30	20	10			11,5	4,0	17,0	24790.0323
M 6	12	24	12			15,0	5,0	28,0	24790.0334
M 6	16	24	12			15,0	5,0	28,0	24790.0336
M 6	20	24	12			15,0	5,0	29,0	24790.0338
M 6	25	24	12			15,0	5,0	30,0	24790.0340
M 6	30	24	12			15,0	5,0	31,0	24790.0342
M 6	35	24	12			15,0	5,0	31,0	24790.0344
M 8	16	30	16			18,0	6,0	55,0	24790.0354
M 8	20	30	16			18,0	6,0	56,0	24790.0356
M 8	25	30	16			18,0	6,0	58,0	24790.0358
M 8	30	30	16			18,0	6,0	60,0	24790.0360
M 8	35	30	16			18,0	6,0	62,0	24790.0362

Příklad použití



Shoda

Pro podrobné informace o shodě vyberte, prosím, požadované číslo výrobku.