

Odpružené elementy • s vnitřním šestihranem

EH 22060.



Popis produktu

Odpružené elementy mohou být použity k aretaci, také jako přítlačný nebo odtlačující prvek.

Materiál

Čípek

- Automatová ocel, tvrzená, bryněrovaná
- Termoplast POM, bílá
- Nerez 1.4305, nitrídaná

Pouzdro

- Automatová ocel, bryněrovaná
- Nerez 1.4305

Pružina

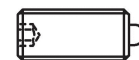
- Nerez

Montáž

Montáž a demontáž je možná pomocí vnitřního šestihranu a zářezu.
Při montáži pomocí zářezu (na straně čípku) se používá speciální nářadí.

Značení

Standardní pružina: bez značení
Zesílená pružina: dvě podélné značky



standardní pružina



zesílená pružina

Další informace

Poznámky

Nestandardní provedení dle poptávky.
Odpružené elementy jsou speciálně zkoušeny na zdvih a sílu pružiny.

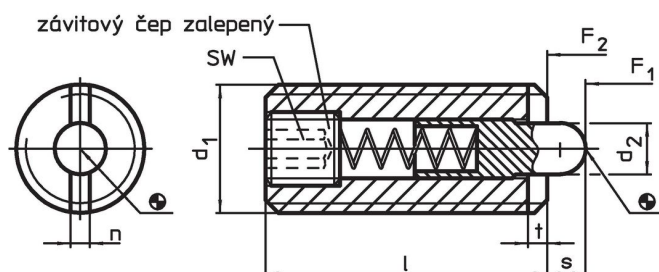
Odkazy

Zajištění závitu dle poptávky, viz. příloha -
Technická data -

Další produkty

- Odpružené elementy, s čípkem a vnitřním šestihranem, utěsněné
- Držáky, pro odpružené elementy

Výkres s rozměry



Informace pro objednání

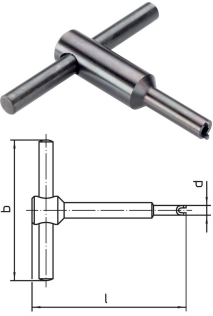
| Rozměry | | | | | SW | Zdvih s | Síla pružiny ¹⁾ | | min. max. | | Obj. č. | |
|--|----------------|----|-----|-----|------|------------|----------------------------|----------------|-------------|-----|---------|------------|
| d ₁ | d ₂ | l | n | t | | | F ₁ | F ₂ | [°C] | | | [g] |
| [mm] | | | | | [mm] | [mm] | [N] | [N] | | | | |
| automatová ocel, standardní pružina | | | | | | | | | | | | |
| M 3 | 1,0 | 12 | 0,4 | 0,5 | 0,7 | 1,0 | 2,5 | 3 | – | 250 | 0,4 | 22060.0003 |
| M 4 | 1,5 | 15 | 0,6 | 0,6 | 1,3 | 1,5 | 4,0 | 16 | – | 250 | 0,9 | 22060.0004 |
| M 5 | 2,4 | 18 | 1,2 | 0,8 | 1,5 | 2,3 | 6,0 | 20 | – | 250 | 1,7 | 22060.0005 |
| M 6 | 2,7 | 20 | 1,3 | 0,9 | 2,0 | 2,5 | 7,0 | 22 | – | 250 | 2,8 | 22060.0006 |
| M 8 | 3,5 | 22 | 1,5 | 1,4 | 2,5 | 3,0 | 8,0 | 38 | – | 250 | 5,7 | 22060.0008 |
| M10 | 4,0 | 22 | 1,5 | 1,4 | 3,0 | 3,0 | 10,0 | 38 | – | 250 | 9,2 | 22060.0010 |
| M12 | 6,0 | 28 | 2,7 | 2,0 | 4,0 | 4,0 | 10,0 | 54 | – | 250 | 16,0 | 22060.0012 |
| M16 | 7,5 | 32 | 3,2 | 2,5 | 5,0 | 5,0 | 38,0 | 100 | – | 250 | 35,0 | 22060.0016 |
| M20 | 10,0 | 40 | 3,7 | 3,0 | 6,0 | 7,0 | 58,0 | 140 | – | 250 | 67,0 | 22060.0020 |
| M24 | 12,0 | 52 | 3,7 | 3,0 | 8,0 | 10,0 | 80,0 | 180 | – | 250 | 129,0 | 22060.0024 |

¹⁾ statistická střední hodnota

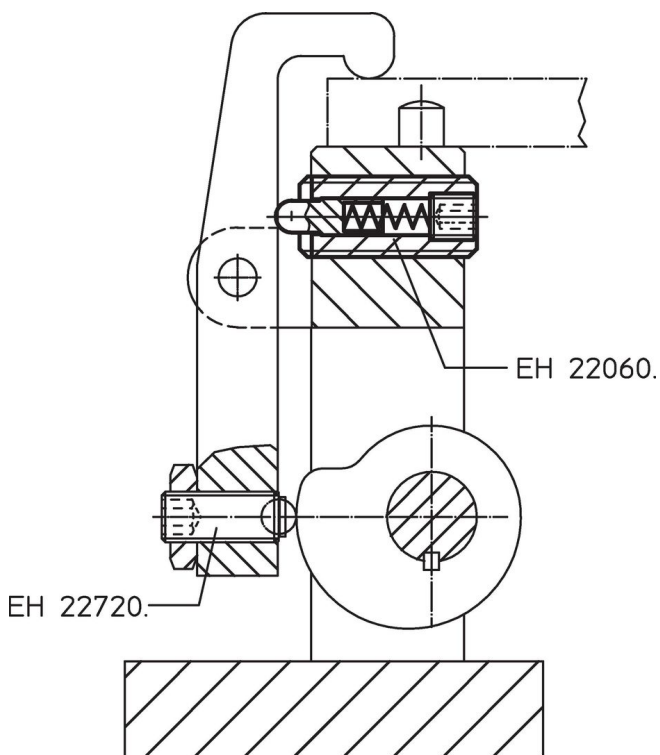
| d ₁ | Rozměry | | | | SW [mm] | Zdvih s [mm] | Síla pružiny ¹⁾ | | min. max. [°C] | | g | Obj. č. | |
|---|----------------|----|-----|-----|------------|--------------------|----------------------------|---------------------|-------------------|------|-------|------------|--|
| | d ₂ | l | n | t | | | F ₁ ~ [N] | F ₂ ~ | min. | max. | | | |
| [mm] | | | | | | | | | | | | | |
| automatová ocel, zesílená pružina | | | | | | | | | | | | | |
| M 5 | 2,4 | 18 | 1,2 | 0,8 | 1,5 | 2,3 | 15,0 | 44 | – | 250 | 1,6 | 22060.0105 | |
| M 6 | 2,7 | 20 | 1,3 | 0,9 | 2,0 | 2,5 | 20,0 | 48 | – | 250 | 2,8 | 22060.0106 | |
| M 8 | 3,5 | 22 | 1,5 | 1,4 | 2,5 | 3,0 | 26,0 | 70 | – | 250 | 5,7 | 22060.0108 | |
| M10 | 4,0 | 22 | 1,5 | 1,4 | 3,0 | 3,0 | 26,0 | 70 | – | 250 | 9,1 | 22060.0110 | |
| M12 | 6,0 | 28 | 2,7 | 2,0 | 4,0 | 4,0 | 51,0 | 122 | – | 250 | 16,0 | 22060.0112 | |
| M16 | 7,5 | 32 | 3,2 | 2,5 | 5,0 | 5,0 | 72,0 | 164 | – | 250 | 26,0 | 22060.0116 | |
| M20 | 10,0 | 40 | 3,7 | 3,0 | 6,0 | 7,0 | 88,0 | 206 | – | 250 | 67,0 | 22060.0120 | |
| M24 | 12,0 | 52 | 3,7 | 3,0 | 8,0 | 10,0 | 94,0 | 250 | – | 250 | 129,0 | 22060.0124 | |
| automatová ocel, čípek z termoplastu, standardní pružina | | | | | | | | | | | | | |
| M 4 | 1,5 | 15 | 0,6 | 0,6 | 1,3 | 1,5 | 4,0 | 16 | -30 | 50 | 0,9 | 22060.0204 | |
| M 5 | 2,4 | 18 | 1,2 | 0,8 | 1,5 | 2,3 | 6,0 | 20 | -30 | 50 | 1,5 | 22060.0205 | |
| M 6 | 2,7 | 20 | 1,3 | 0,9 | 2,0 | 2,5 | 7,0 | 22 | -30 | 50 | 2,3 | 22060.0206 | |
| M 8 | 3,5 | 22 | 1,5 | 1,4 | 2,5 | 3,0 | 8,0 | 38 | -30 | 50 | 5,0 | 22060.0208 | |
| M10 | 4,0 | 22 | 1,5 | 1,4 | 3,0 | 3,0 | 10,0 | 38 | -30 | 50 | 8,1 | 22060.0210 | |
| M12 | 6,0 | 28 | 2,7 | 2,0 | 4,0 | 4,0 | 10,0 | 54 | -30 | 50 | 14,0 | 22060.0212 | |
| M16 | 7,5 | 32 | 3,2 | 2,5 | 5,0 | 5,0 | 38,0 | 100 | -30 | 50 | 31,0 | 22060.0216 | |
| M20 | 10,0 | 40 | 3,7 | 3,0 | 6,0 | 7,0 | 58,0 | 140 | -30 | 50 | 77,0 | 22060.0220 | |
| M24 | 12,0 | 52 | 3,7 | 3,0 | 8,0 | 10,0 | 80,0 | 180 | -30 | 50 | 143,0 | 22060.0224 | |
| nerez, standardní pružina | | | | | | | | | | | | | |
| M 3 | 1,0 | 12 | 0,4 | 0,5 | 0,7 | 1,0 | 2,5 | 3 | – | 250 | 0,9 | 22060.0403 | |
| M 4 | 1,5 | 15 | 0,6 | 0,6 | 1,3 | 1,5 | 4,0 | 16 | – | 250 | 0,9 | 22060.0404 | |
| M 5 | 2,4 | 18 | 1,2 | 0,8 | 1,5 | 2,3 | 6,0 | 20 | – | 250 | 1,7 | 22060.0405 | |
| M 6 | 2,7 | 20 | 1,3 | 0,9 | 2,0 | 2,5 | 6,0 | 22 | – | 250 | 2,8 | 22060.0406 | |
| M 8 | 3,5 | 22 | 1,5 | 1,4 | 2,5 | 3,0 | 8,0 | 38 | – | 250 | 4,6 | 22060.0408 | |
| M10 | 4,0 | 22 | 1,5 | 1,4 | 3,0 | 3,0 | 10,0 | 38 | – | 250 | 9,5 | 22060.0410 | |
| M12 | 6,0 | 28 | 2,7 | 2,0 | 4,0 | 4,0 | 10,0 | 54 | – | 250 | 16,0 | 22060.0412 | |
| M16 | 7,5 | 32 | 3,2 | 2,5 | 5,0 | 5,0 | 38,0 | 100 | – | 250 | 34,0 | 22060.0416 | |
| M20 | 10,0 | 40 | 3,7 | 3,0 | 6,0 | 7,0 | 58,0 | 140 | – | 250 | 67,0 | 22060.0420 | |
| M24 | 12,0 | 52 | 3,7 | 3,0 | 8,0 | 10,0 | 80,0 | 180 | – | 250 | 164,0 | 22060.0424 | |
| nerez, zesílená pružina | | | | | | | | | | | | | |
| M 5 | 2,4 | 18 | 1,2 | 0,8 | 1,5 | 2,3 | 15,0 | 44 | – | 250 | 2,2 | 22060.0505 | |
| M 6 | 2,7 | 20 | 1,3 | 0,9 | 2,0 | 2,5 | 20,0 | 48 | – | 250 | 4,1 | 22060.0506 | |
| M 8 | 3,5 | 22 | 1,5 | 1,4 | 2,5 | 3,0 | 26,0 | 70 | – | 250 | 7,4 | 22060.0508 | |
| M10 | 4,0 | 22 | 1,5 | 1,4 | 3,0 | 3,0 | 26,0 | 70 | – | 250 | 12,0 | 22060.0510 | |
| M12 | 6,0 | 28 | 2,7 | 2,0 | 4,0 | 4,0 | 51,0 | 122 | – | 250 | 22,0 | 22060.0512 | |
| M16 | 7,5 | 32 | 3,2 | 2,5 | 5,0 | 5,0 | 72,0 | 164 | – | 250 | 46,0 | 22060.0516 | |
| M20 | 10,0 | 40 | 3,7 | 3,0 | 6,0 | 7,0 | 88,0 | 206 | – | 250 | 87,0 | 22060.0520 | |
| M24 | 12,0 | 52 | 3,7 | 3,0 | 8,0 | 10,0 | 94,0 | 250 | – | 250 | 167,0 | 22060.0524 | |
| nerez, čípek z termoplastu, standardní pružina | | | | | | | | | | | | | |
| M 4 | 1,5 | 15 | 0,6 | 0,6 | 1,3 | 1,5 | 4,0 | 16 | -30 | 50 | 0,9 | 22060.0604 | |
| M 5 | 2,4 | 18 | 1,2 | 0,8 | 1,5 | 2,3 | 6,0 | 20 | -30 | 50 | 1,6 | 22060.0605 | |
| M 6 | 2,7 | 20 | 1,3 | 0,9 | 2,0 | 2,5 | 7,0 | 22 | -30 | 50 | 2,5 | 22060.0606 | |
| M 8 | 3,5 | 22 | 1,5 | 1,4 | 2,5 | 3,0 | 8,0 | 38 | -30 | 50 | 5,1 | 22060.0608 | |
| M10 | 4,0 | 22 | 1,5 | 1,4 | 3,0 | 3,0 | 10,0 | 38 | -30 | 50 | 8,5 | 22060.0610 | |
| M12 | 6,0 | 28 | 2,7 | 2,0 | 4,0 | 4,0 | 10,0 | 54 | -30 | 50 | 14,0 | 22060.0612 | |
| M16 | 7,5 | 32 | 3,2 | 2,5 | 5,0 | 5,0 | 38,0 | 100 | -30 | 50 | 31,0 | 22060.0616 | |
| M20 | 10,0 | 40 | 3,7 | 3,0 | 6,0 | 7,0 | 58,0 | 140 | -30 | 50 | 77,0 | 22060.0620 | |
| M24 | 12,0 | 52 | 3,7 | 3,0 | 8,0 | 10,0 | 80,0 | 180 | -30 | 50 | 143,0 | 22060.0624 | |
| nerez, čípek z termoplastu, zesílená pružina | | | | | | | | | | | | | |
| M 5 | 2,4 | 18 | 1,2 | 0,8 | 1,5 | 2,3 | 15,0 | 44 | -30 | 50 | 1,9 | 22060.0705 | |
| M 6 | 2,7 | 20 | 1,3 | 0,9 | 2,0 | 2,5 | 20,0 | 48 | -30 | 50 | 3,6 | 22060.0706 | |
| M 8 | 3,5 | 22 | 1,5 | 1,4 | 2,5 | 3,0 | 26,0 | 70 | -30 | 50 | 6,6 | 22060.0708 | |
| M10 | 4,0 | 22 | 1,5 | 1,4 | 3,0 | 3,0 | 26,0 | 70 | -30 | 50 | 11,0 | 22060.0710 | |
| M12 | 6,0 | 28 | 2,7 | 2,0 | 4,0 | 4,0 | 51,0 | 122 | -30 | 50 | 20,0 | 22060.0712 | |
| M16 | 7,5 | 32 | 3,2 | 2,5 | 5,0 | 5,0 | 72,0 | 164 | -30 | 50 | 43,0 | 22060.0716 | |
| M20 | 10,0 | 40 | 3,7 | 3,0 | 6,0 | 7,0 | 88,0 | 206 | -30 | 50 | 75,0 | 22060.0720 | |
| M24 | 12,0 | 52 | 3,7 | 3,0 | 8,0 | 10,0 | 94,0 | 250 | -30 | 50 | 146,0 | 22060.0724 | |

¹⁾ statistická střední hodnota

Příslušenství

| | d ₁ | b | Rozměry | | [g] | Obj. č. |
|---|----------------|-----|---------|-----|-----|----------------------------|
| | | | d | l | | |
| [mm] | | | | | | |
| Montážní nářadí pro montáž pomocí zářezu (na straně čípku) | | | | | | |
|  | M 3 | 50 | 2,35 | 55 | 17 | 22060.0903 |
| | M 4 | 50 | 3,00 | 55 | 18 | 22060.0904 |
| | M 5 | 50 | 4,00 | 60 | 21 | 22060.0905 |
| | M 6 | 60 | 4,70 | 60 | 30 | 22060.0906 |
| | M 8 | 60 | 6,45 | 70 | 39 | 22060.0908 |
| | M10 | 80 | 8,00 | 80 | 66 | 22060.0910 |
| | M12 | 80 | 9,80 | 80 | 72 | 22060.0912 |
| | M16 | 100 | 13,50 | 105 | 144 | 22060.0916 |
| | M20 | 100 | 17,00 | 115 | 162 | 22060.0920 |
| | M24 | 100 | 19,90 | 100 | 258 | 22070.0838 |

Příklad použití



Shoda

Pro podrobné informace o shodě vyberte, prosím, požadované číslo výrobku.