

高压花的螺母 (有轴环) · DIN 466

EH 24780.



产品描述

材质

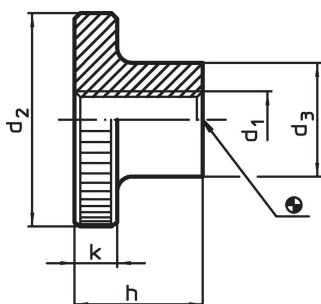
- 钢，涂黑，质量 5
- 不锈钢 1.4301，喷砂处理

更多信息

注意事项

根据 DIN 规范，压花的间距和深度也不同。

图面

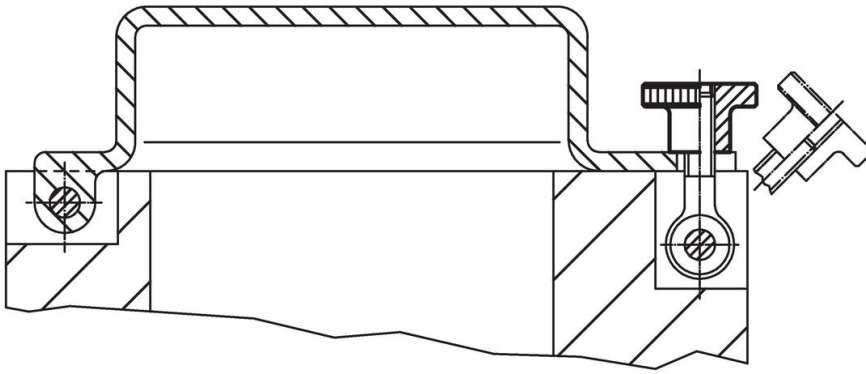


订单信息

d ₁	d ₂	d ₃	尺寸 [mm]	h	k	重量 [g]	品号
钢							
M 3	12	6		7,5	2,5	2,9	24780.0030
M 4	16	8		9,5	3,5	6,7	24780.0040
M 5	20	10		11,5	4,0	12,0	24780.0050
M 6	24	12		15,0	5,0	23,0	24780.0060
M 8	30	16		18,0	6,0	44,0	24780.0080
M10	36	20		23,0	8,0	85,0	24780.0100
M12	40	22		25,0	10,0	119,0	24780.0120 ¹⁾
不锈钢							
M 4	16	8		9,5	3,5	6,7	24780.0240
M 5	20	10		11,5	4,0	12,0	24780.0250
M 6	24	12		15,0	5,0	23,0	24780.0260
M 8	30	16		18,0	6,0	44,0	24780.0280
M10	36	20		23,0	8,0	85,0	24780.0300

¹⁾ DIN 标准不包含这些尺寸。

应用范例



遵守

For detailed compliance information please select the desired article number.