

扭矩手柄
EH 24710.



产品描述

Torque handles are used wherever a limitation of the exerted hand force is required. 具有整合扭矩机构的手柄允许在拧紧期间定义扭矩限制。达到扭矩导致“过度锁附”。为了释放扭矩被无限制的传递。 These handles combine the functionality of a ratchet wrench with the modern and ergonomic design of a nurlted nut / knurled thumb screw.

材质

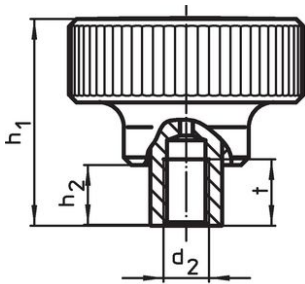
- 盖子
 - 热塑性PA 6，浅灰色，类似于RAL 7035
- 扭力机构
 - 钢，硬化
- 把手
 - 铝，黑色阳极
- 内部零件
 - 钢，染黑
- 螺丝
 - 钢，染黑

更多信息

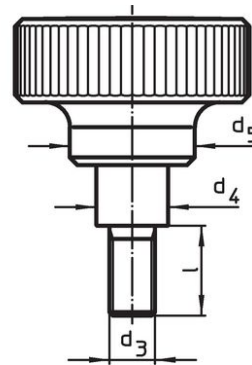
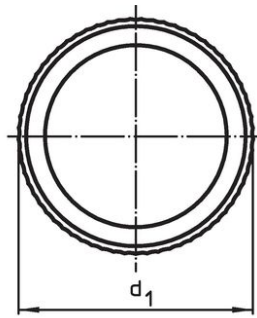
更多产品

- Three-Lobed Torque Handles

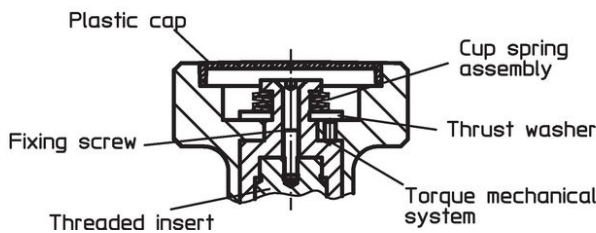
图面



picture 1




picture 2



订单信息

尺寸									max. [°C]	起动 扭力 +/- 10% max. [Nm]	[g]	品号
d ₁	d ₂	d ₃	l	d ₄	d ₅	h ₁	h ₂	t				
[mm]												
有母牙 – 相片 1												
34	M 3	-	-	10,0	21	37,5	9,5	7	100	1,0	48	24710.0020
34	M 4	-	-	10,0	21	37,5	9,5	9	100	1,0	60	24710.0022
34	M 5	-	-	10,0	21	37,5	9,5	9	100	1,0	62	24710.0024
34	M 6	-	-	10,0	21	37,5	9,5	9	100	1,0	60	24710.0026
42	M 6	-	-	13,5	27	43,5	11,5	11	100	2,0	111	24710.0030
42	M 8	-	-	13,5	27	43,5	11,5	11	100	2,0	112	24710.0032
52	M10	-	-	19,0	32	54,0	15,5	17	100	3,0	221	24710.0040
52	M12	-	-	19,0	32	54,0	15,5	17	100	3,0	208	24710.0042

尺寸									max. [°C]	起动 扭力 +/- 10% max. [Nm]	 [g]	品号
d ₁	d ₂	d ₃	l	d ₄	d ₅	h ₁	h ₂	t				
[mm]												
62	M10	-	-	19,0	33	54,0	15,5	17	100	4,0	244	24710.0050
62	M12	-	-	19,0	33	54,0	15,5	17	100	4,0	285	24710.0052
62	M10	-	-	19,0	33	54,0	15,5	17	100	5,5	245	24710.0060
62	M12	-	-	19,0	33	54,0	15,5	17	100	5,5	285	24710.0062
有螺丝 - 相片 2												
34	-	M 5	12	10,0	21	37,5	9,5	-	100	1,0	62	24710.0300
34	-	M 5	16	10,0	21	37,5	9,5	-	100	1,0	63	24710.0301
34	-	M 5	20	10,0	21	37,5	9,5	-	100	1,0	60	24710.0302
34	-	M 5	25	10,0	21	37,5	9,5	-	100	1,0	64	24710.0303
34	-	M 5	32	10,0	21	37,5	9,5	-	100	1,0	65	24710.0304
34	-	M 6	12	10,0	21	37,5	9,5	-	100	1,0	60	24710.0305
34	-	M 6	16	10,0	21	37,5	9,5	-	100	1,0	65	24710.0306
34	-	M 6	20	10,0	21	37,5	9,5	-	100	1,0	65	24710.0307
34	-	M 6	25	10,0	21	37,5	9,5	-	100	1,0	67	24710.0308
34	-	M 6	32	10,0	21	37,5	9,5	-	100	1,0	70	24710.0309
42	-	M 8	16	13,5	27	43,5	11,5	-	100	2,0	152	24710.0400
42	-	M 8	20	13,5	27	43,5	11,5	-	100	2,0	153	24710.0401
42	-	M 8	25	13,5	27	43,5	11,5	-	100	2,0	123	24710.0402
42	-	M 8	32	13,5	27	43,5	11,5	-	100	2,0	158	24710.0403
42	-	M 8	40	13,5	27	43,5	11,5	-	100	2,0	128	24710.0404
42	-	M10	20	13,5	27	43,5	11,5	-	100	2,0	120	24710.0405
42	-	M10	25	13,5	27	43,5	11,5	-	100	2,0	120	24710.0406
42	-	M10	32	13,5	27	43,5	11,5	-	100	2,0	131	24710.0407
42	-	M10	40	13,5	27	43,5	11,5	-	100	2,0	179	24710.0408
42	-	M10	50	13,5	27	43,5	11,5	-	100	2,0	187	24710.0409
52	-	M10	25	19,0	32	54,0	15,5	-	100	3,0	241	24710.0500
52	-	M10	32	19,0	32	54,0	15,5	-	100	3,0	246	24710.0501
52	-	M10	40	19,0	32	54,0	15,5	-	100	3,0	248	24710.0502
52	-	M10	50	19,0	32	54,0	15,5	-	100	3,0	254	24710.0503
52	-	M10	63	19,0	32	54,0	15,5	-	100	3,0	254	24710.0504
52	-	M12	25	19,0	32	54,0	15,5	-	100	3,0	251	24710.0505
52	-	M12	32	19,0	32	54,0	15,5	-	100	3,0	254	24710.0506
52	-	M12	40	19,0	32	54,0	15,5	-	100	3,0	262	24710.0507
52	-	M12	50	19,0	32	54,0	15,5	-	100	3,0	270	24710.0508
52	-	M12	63	19,0	32	54,0	15,5	-	100	3,0	274	24710.0509
62	-	M10	25	19,0	33	54,0	15,5	-	100	4,0	334	24710.0600
62	-	M10	32	19,0	33	54,0	15,5	-	100	4,0	339	24710.0601
62	-	M10	40	19,0	33	54,0	15,5	-	100	4,0	341	24710.0602
62	-	M10	50	19,0	33	54,0	15,5	-	100	4,0	347	24710.0603
62	-	M10	63	19,0	33	54,0	15,5	-	100	4,0	355	24710.0604
62	-	M12	25	19,0	33	54,0	15,5	-	100	4,0	344	24710.0605
62	-	M12	32	19,0	33	54,0	15,5	-	100	4,0	347	24710.0606
62	-	M12	40	19,0	33	54,0	15,5	-	100	4,0	355	24710.0607
62	-	M12	50	19,0	33	54,0	15,5	-	100	4,0	363	24710.0608
62	-	M12	63	19,0	33	54,0	15,5	-	100	4,0	367	24710.0609
62	-	M10	25	19,0	33	54,0	15,5	-	100	5,5	266	24710.0700
62	-	M10	32	19,0	33	54,0	15,5	-	100	5,5	339	24710.0701
62	-	M10	40	19,0	33	54,0	15,5	-	100	5,5	277	24710.0702
62	-	M10	50	19,0	33	54,0	15,5	-	100	5,5	280	24710.0703
62	-	M10	63	19,0	33	54,0	15,5	-	100	5,5	355	24710.0704
62	-	M12	25	19,0	33	54,0	15,5	-	100	5,5	344	24710.0705
62	-	M12	32	19,0	33	54,0	15,5	-	100	5,5	347	24710.0706
62	-	M12	40	19,0	33	54,0	15,5	-	100	5,5	355	24710.0707
62	-	M12	50	19,0	33	54,0	15,5	-	100	5,5	363	24710.0708
62	-	M12	63	19,0	33	54,0	15,5	-	100	5,5	367	24710.0709

遵守

符合 RoHS

含铅 - 符合例外 6a / 6b / 6c

含有 >0.1% w/w 的 SVHC 物质

含铅 - SVHC [REACH] 清单截至 2024 年 6 月 27 日

包含 65 号提案的物质



铅暴露会导致癌症和生殖伤害

<https://www.P65Warnings.ca.gov/>

不含冲突矿物

„本产品不含来自刚果民主共和国或邻近国家的任何被指定为“冲突矿物”的物质，例如钽、锡、金或钨。