

## 压花螺帽 · DIN 6303

EH 24480.



### 产品描述

#### 材质

- 切削钢，染黑
- 不锈钢 1.4305

#### 组装

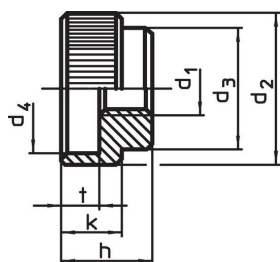
型式 B：钻孔后的孔必须符合 H7 的公差。

#### 更多信息

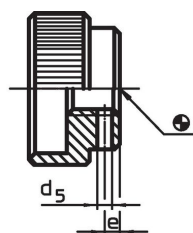
#### 注意事项

根据 DIN 规范，压花的间距和深度也不同。

### 图面



picture 1

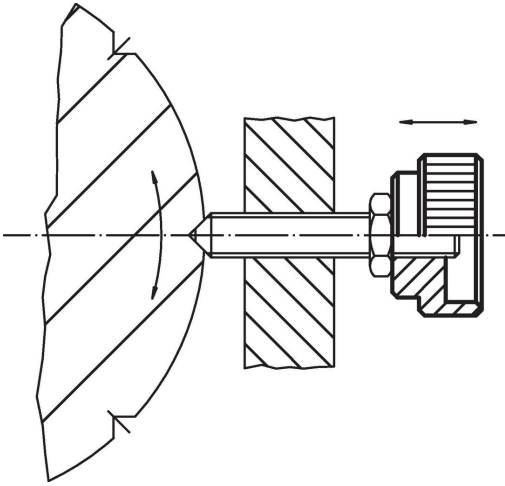


picture 2

### 订单信息

d <sub>1</sub>	d <sub>2</sub>	d <sub>3</sub>	d <sub>4</sub>	尺寸 d <sub>5</sub> Pre 钻 [mm]	e	h	k	t	合适的直柄 DIN 7	 [g]	品号
<b>无槽孔，型式 A – 相片 1, 易切削钢</b>											
M 5	20	14	15	–	–	12	8	5	–	16	<a href="#">24480.0005</a>
M 6	24	16	18	–	–	14	10	6	–	27	<a href="#">24480.0006</a>
M 8	30	20	24	–	–	17	12	7	–	46	<a href="#">24480.0008</a>
M10	36	28	30	–	–	20	14	8	–	83	<a href="#">24480.0010</a>
M12	40	32	34	–	–	24	16	10	–	123	<a href="#">24480.0012</a>
<b>有槽孔，型式 B – 相片 2, 易切削钢</b>											
M 5	20	14	15	1,4	2,5	12	8	5	1,5 m6 x 14	15	<a href="#">24480.0105</a>
M 6	24	16	18	1,4	2,5	14	10	6	1,5 m6 x 16	25	<a href="#">24480.0106</a>
M 8	30	20	24	1,9	3,0	17	12	7	2,0 m6 x 20	45	<a href="#">24480.0108</a>
M10	36	28	30	2,9	4,0	20	14	8	3,0 m6 x 28	86	<a href="#">24480.0110</a>
M12	40	32	34	3,9	4,0	24	16	10	4,0 m6 x 32	121	<a href="#">24480.0112</a>
<b>无槽孔，型式 A – 相片 1, 不锈钢</b>											
M 5	20	14	15	–	–	12	8	5	–	16	<a href="#">24480.0205</a>
M 6	24	16	18	–	–	14	10	6	–	27	<a href="#">24480.0206</a>
M 8	30	20	24	–	–	17	12	7	–	46	<a href="#">24480.0208</a>
M10	36	28	30	–	–	20	14	8	–	83	<a href="#">24480.0210</a>
M12	40	32	34	–	–	24	16	10	–	123	<a href="#">24480.0212</a>
<b>有槽孔，型式 B – 相片 2, 不锈钢</b>											
M 5	20	14	15	1,4	2,5	12	8	5	1,5 m6 x 14	15	<a href="#">24480.0305</a>
M 6	24	16	18	1,4	2,5	14	10	6	1,5 m6 x 16	25	<a href="#">24480.0306</a>
M 8	30	20	24	1,9	3,0	17	12	7	2,0 m6 x 20	45	<a href="#">24480.0308</a>
M10	36	28	30	2,9	4,0	20	14	8	3,0 m6 x 28	86	<a href="#">24480.0310</a>
M12	40	32	34	3,9	4,0	24	16	10	4,0 m6 x 32	121	<a href="#">24480.0312</a>

应用范例



遵守

For detailed compliance information please select the desired article number.